

14-3-3 θ/τ (Phospho Ser232) Rabbit pAb

CatalogNo: YP0903 **Orthogonal Validated** 

Key Features

Host Species

- Rabbit

Reactivity

- Human, Mouse, Rat

Applications

- WB, IHC, IF, ELISA

MW

- 28kD (Observed)

Isotype

- IgG

Storage

Storage* -15°C to -25°C/1 year (Do not lower than -25°C)

Formulation Liquid in PBS containing 50% glycerol, 0.5% BSA and 0.02% sodium azide.

Recommended Dilution Ratios

WB 1:500-1:2000

IHC 1:100-1:300

IF 1:200-1:1000

ELISA 1:5000

Not yet tested in other applications.

Basic Information

Clonality Polyclonal

Immunogen Information

Immunogen The antiserum was produced against synthesized peptide derived from human 14-3-3 θ/τ around the phosphorylation site of Ser232. AA range:196-245

Specificity

Phospho-14-3-3 θ/τ (S232) Polyclonal Antibody detects endogenous levels of 14-3-3 θ/τ protein only when phosphorylated at S232. The name of modified sites may be influenced by many factors, such as species (the modified site was not originally found in human samples) and the change of protein sequence (the previous protein sequence is incomplete, and the protein sequence may be prolonged with the development of protein sequencing technology). When naming, we will use the "numbers" in historical reference to keep the sites consistent with the reports. The antibody binds to the following modification sequence (lowercase letters are modification sites):SDsAG

Target Information

Gene name YWHAQ

Protein Name 14-3-3 protein theta

Organism	Gene ID	UniProt ID
Human	5350 ;	P27348 ;
Mouse	22630 ;	P68254 ;
Rat	25577 ;	P68255 ;

Cellular Localization

Cytoplasm. In neurons, axonally transported to the nerve terminals.

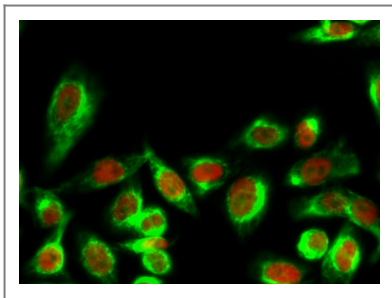
Tissue specificity

Abundantly expressed in brain, heart and pancreas, and at lower levels in kidney and placenta. Up-regulated in the lumbar spinal cord from patients with sporadic amyotrophic lateral sclerosis (ALS) compared with controls, with highest levels of expression in individuals with predominant lower motor neuron involvement.

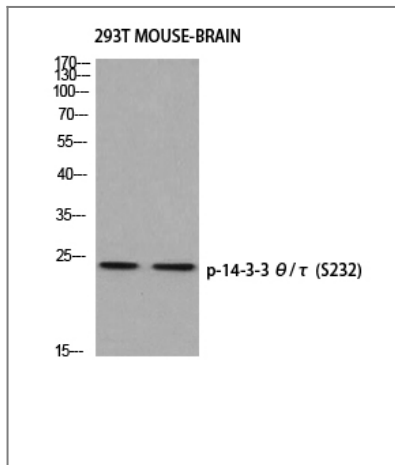
Function

Function:Adapter protein implicated in the regulation of a large spectrum of both general and specialized signaling pathway. Binds to a large number of partners, usually by recognition of a phosphoserine or phosphothreonine motif. Binding generally results in the modulation of the activity of the binding partner.,similarity:Belongs to the 14-3-3 family.,subcellular location:In neurons, axonally transported to the nerve terminals.,subunit:Homodimer. Interacts with PCKT1 (By similarity). Interacts with SSH1. Interacts with CDKN1B ('Thr-198' phosphorylated form); the interaction translocates CDKN1B to the cytoplasm.,tissue specificity:Abundantly expressed in brain, heart and pancreas, and at lower levels in kidney and placenta. Up-regulated in the lumbar spinal cord from patients with sporadic amyotrophic lateral sclerosis (ALS) compared with controls, with highest levels of expression in individuals with predominant lower motor neuron involvement.,

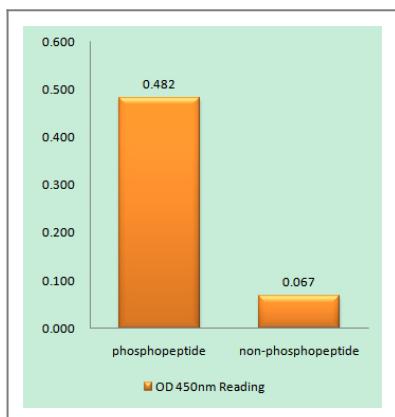
Validation Data



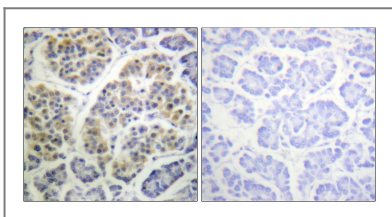
Immunofluorescence analysis of HeLa cell. 1, mouse Tubulin Antibody YM3505 (green) was diluted at 1:200(4° overnight). 14-3-3 θ/τ (phospho Ser232) Polyclonal Antibody (green) was diluted at 1:200(4° overnight). 2, Goat Anti Rabbit Alexa Fluor 488 Catalog:RS3211 was diluted at 1:1000(room temperature, 50min). Goat Anti Mouse Alexa Fluor 594 Catalog:RS3608 was diluted at 1:1000(room temperature, 50min).



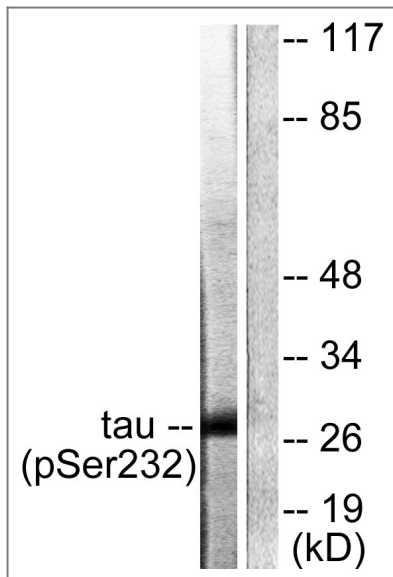
Western blot analysis of 293T MOUSE-BRAIN using p-14-3-3 θ/τ (S232) antibody. Antibody was diluted at 1:500



Enzyme-Linked Immunosorbent Assay (Phospho-ELISA) for Immunogen Phosphopeptide (Phospho-left) and Non-Phosphopeptide (Phospho-right), using 14-3-3 θ/τ (Phospho-Ser232) Antibody



Immunohistochemistry analysis of paraffin-embedded human pancreas, using 14-3-3 θ/τ (Phospho-Ser232) Antibody. The picture on the right is blocked with the phospho peptide.



Western blot analysis of lysates from HeLa cells, using 14-3-3 θ/τ (Phospho-Ser232) Antibody. The lane on the right is blocked with the phospho peptide.

Contact information

Orders: order.cn@immunoway.com
Support: support.cn@immunoway.com
Telephone: 400-8787-807(China)
Website: <http://www.immunoway.com.cn>
Address: 2200 Ringwood Ave San Jose, CA 95131 USA



Please scan the QR code to access additional product information:
14-3-3 θ/τ (Phospho Ser232) Rabbit pAb

For Research Use Only. Not for Use in Diagnostic Procedures.

[Antibody](#) | [ELISA Kits](#) | [Protein](#) | [Reagents](#)