

## ACK1 (Phospho Tyr284) Rabbit pAb

CatalogNo: YP0897 **Orthogonal Validated** 

### Key Features

#### Host Species

- Rabbit

#### Reactivity

- Human, Mouse

#### Applications

- WB, IHC, IF, ELISA

#### MW

- 120kD (Observed)

#### Isotype

- IgG

### Storage

**Storage\*** -15°C to -25°C/1 year (Do not lower than -25°C)

**Formulation** Liquid in PBS containing 50% glycerol, 0.5% BSA and 0.02% sodium azide.

### Recommended Dilution Ratios

**WB 1:500-1:2000**

**IHC 1:100-1:300**

**IF 1:200-1:1000**

**ELISA 1:10000**

Not yet tested in other applications.

### Basic Information

**Clonality** Polyclonal

### Immunogen Information

**Immunogen** The antiserum was produced against synthesized peptide derived from human ACK1 around the phosphorylation site of Tyr284. AA range: 250-299

## Specificity

Phospho-ACK (Y284) Polyclonal Antibody detects endogenous levels of ACK protein only when phosphorylated at Y284. The name of modified sites may be influenced by many factors, such as species (the modified site was not originally found in human samples) and the change of protein sequence (the previous protein sequence is incomplete, and the protein sequence may be prolonged with the development of protein sequencing technology). When naming, we will use the "numbers" in historical reference to keep the sites consistent with the reports. The antibody binds to the following modification sequence (lowercase letters are modification sites):DHVM

## Target Information

**Gene name** TNK2 ACK1

**Protein Name** Activated CDC42 kinase 1

Organism	Gene ID	UniProt ID
Human	<a href="#">10188</a> ;	<a href="#">Q07912</a> ;
Mouse	<a href="#">51789</a> ;	<a href="#">O54967</a> ;

### Cellular Localization

Cell membrane . Nucleus . Endosome . Cell junction, adherens junction . Cytoplasmic vesicle membrane; Peripheral membrane protein; Cytoplasmic side . Cytoplasmic vesicle, clathrin-coated vesicle . Membrane, clathrin-coated pit . Cytoplasm, perinuclear region . Cytoplasm, cytosol . The Tyr-284 phosphorylated form is found both in the membrane and nucleus (By similarity). Co-localizes with EGFR on endosomes (PubMed:20333297). Nuclear translocation is CDC42-dependent (By similarity). Detected in long filamentous cytosolic structures where it co-localizes with CTPS1 (By similarity). .

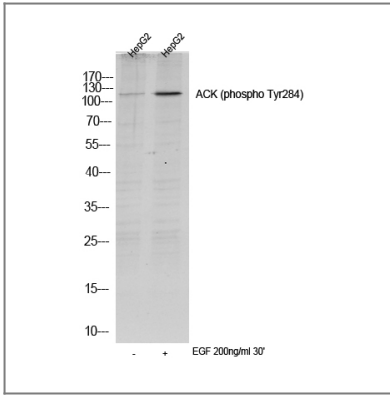
### Tissue specificity

The Tyr-284 phosphorylated form shows a significant increase in expression in breast cancers during the progressive stages i.e. normal to hyperplasia (ADH), ductal carcinoma in situ (DCIS), invasive ductal carcinoma (IDC) and lymph node metastatic (LNMM) stages. It also shows a significant increase in expression in prostate cancers during the progressive stages.

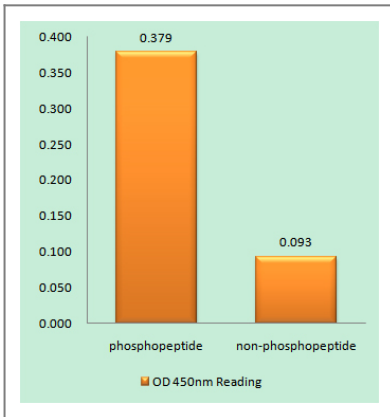
### Function

Catalytic activity:ATP + a [protein]-L-tyrosine = ADP + a [protein]-L-tyrosine phosphate.,cofactor:Magnesium.,enzyme regulation:The SH3 domain appears to play an autoinhibitory role.,Function:Downstream effector of CDC42 which mediates CDC42-dependent cell migration via phosphorylation of BCAR1. Binds to both poly- and mono-ubiquitin and regulates ligand-induced degradation of EGFR. Participates in clathrin-mediated endocytosis. May be involved both in adult synaptic function and plasticity and in brain development.,sequence Caution:Unlikely isoform. Aberrant splice sites.,similarity:Belongs to the protein kinase superfamily. Tyr protein kinase family.,similarity:Contains 1 CRIB domain.,similarity:Contains 1 protein kinase domain.,similarity:Contains 1 SH3 domain.,subunit:Interacts with CDC42. Interacts with activated CSPG4.,

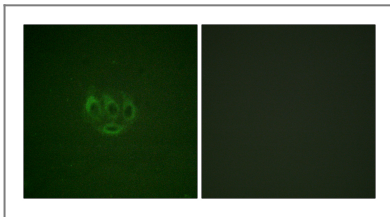
## Validation Data



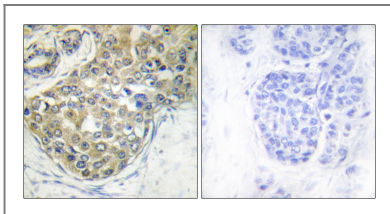
Western blot analysis of lysates from HepG2 cells, treated with EGF 200ng/ml 30', (Green) primary antibody was diluted at 1:1000, 4° over night, secondary antibody(cat:RS23920)was diluted at 1:10000, 37° 1hour.



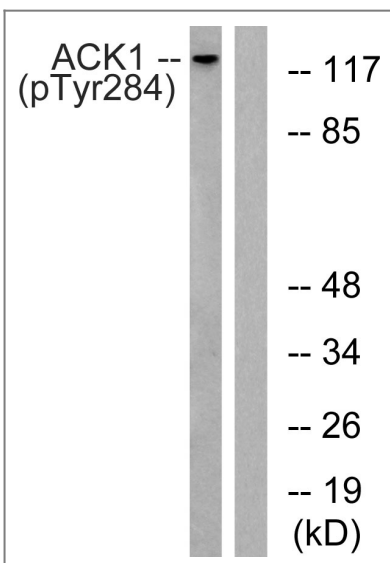
Enzyme-Linked Immunosorbent Assay (Phospho-ELISA) for Immunogen Phosphopeptide (Phospho-left) and Non-Phosphopeptide (Phospho-right), using ACK1 (Phospho-Tyr284) Antibody



Immunofluorescence analysis of A549 cells, using ACK1 (Phospho-Tyr284) Antibody. The picture on the right is blocked with the phospho peptide.



Immunohistochemistry analysis of paraffin-embedded human breast carcinoma, using ACK1 (Phospho-Tyr284) Antibody. The picture on the right is blocked with the phospho peptide.



Western blot analysis of lysates from HepG2 cells treated with EGF 200ng/ml 30', using ACK1 (Phospho-Tyr284) Antibody. The lane on the right is blocked with the phospho peptide.

## | Contact information

Orders: order.cn@immunoway.com  
Support: support.cn@immunoway.com  
Telephone: 400-8787-807(China)  
Website: <http://www.immunoway.com.cn>  
Address: 2200 Ringwood Ave San Jose, CA 95131 USA



Please scan the QR code to access additional product information:  
**ACK1 (Phospho Tyr284) Rabbit pAb**

---

For Research Use Only. Not for Use in Diagnostic Procedures.

[Antibody](#) | [ELISA Kits](#) | [Protein](#) | [Reagents](#)