

Splicing factor 1 (Phospho Ser82) Rabbit pAb

CatalogNo: YP0894 **Orthogonal Validated** 

Key Features

Host Species

- Rabbit

Reactivity

- Human, Mouse, Monkey

Applications

- WB, IHC, IF, ELISA

MW

- 68kD (Observed)

Isotype

- IgG

Storage

Storage* -15°C to -25°C/1 year (Do not lower than -25°C)

Formulation Liquid in PBS containing 50% glycerol, 0.5% BSA and 0.02% sodium azide.

Recommended Dilution Ratios

WB 1:500-1:2000

IHC 1:100-1:300

IF 1:200-1:1000

ELISA 1:5000

Not yet tested in other applications.

Basic Information

Clonality Polyclonal

Immunogen Information

Immunogen The antiserum was produced against synthesized peptide derived from human SF1 around the phosphorylation site of Ser82. AA range:48-97

Specificity

Phospho-Splicing factor 1 (S82) Polyclonal Antibody detects endogenous levels of Splicing factor 1 protein only when phosphorylated at S82. The name of modified sites may be influenced by many factors, such as species (the modified site was not originally found in human samples) and the change of protein sequence (the previous protein sequence is incomplete, and the protein sequence may be prolonged with the development of protein sequencing technology). When naming, we will use the "numbers" in historical reference to keep the sites consistent with the reports. The antibody binds to the following modification sequence (lowercase letters are modification sites):SPsPE

| Target Information

Gene name SF1

Protein Name Splicing factor 1

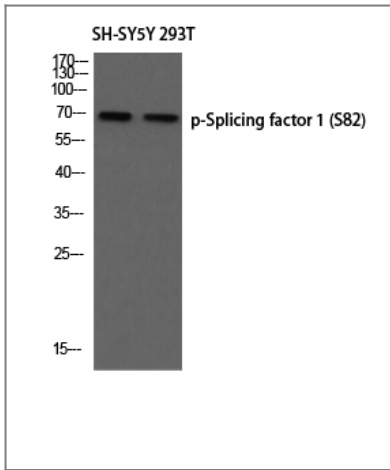
Organism	Gene ID	UniProt ID
Human	7536;	Q15637;
Mouse		Q64213;

Cellular Localization Nucleus.

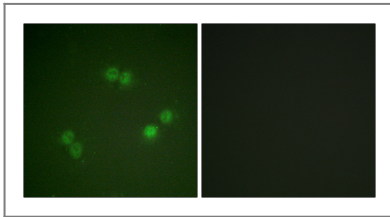
Tissue specificity Detected in lung, ovary, adrenal gland, colon, kidney, muscle, pancreas, thyroid, placenta, brain, liver and heart.

Function Alternative products:Additional isoforms seem to exist,Function:Necessary for the ATP-dependent first step of spliceosome assembly. Binds to the intron branch point sequence (BPS) 5'-UACUAAC-3' of the pre-mRNA. May act as transcription repressor.,PTM:Phosphorylation on Ser-20 interferes with U2AF2 binding and spliceosome assembly. Isoform 6 is phosphorylated on Ser-463.,similarity:Belongs to the BBP/SF1 family.,similarity:Contains 1 CCHC-type zinc finger.,similarity:Contains 1 KH domain.,subunit:Binds U2AF2. Interacts with U1 snRNA. Binds EWSR1, FUS and TAF15.,tissue specificity:Detected in lung, ovary, adrenal gland, colon, kidney, muscle, pancreas, thyroid, placenta, brain, liver and heart.,

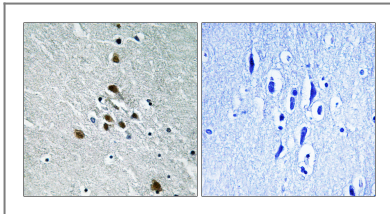
| Validation Data



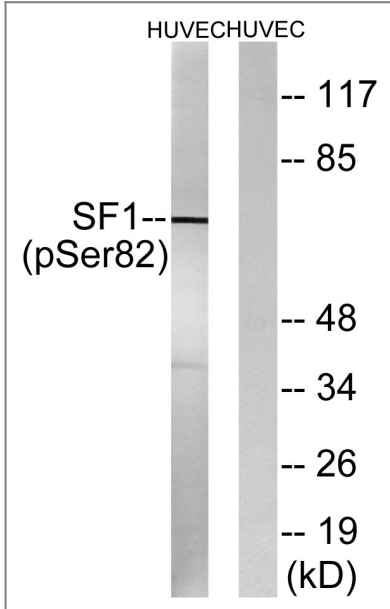
Western blot analysis of SH-SY5Y 293T using p-Splicing factor 1 (S82) antibody. Antibody was diluted at 1:500



Immunofluorescence analysis of A549 cells, using SF1 (Phospho-Ser82) Antibody. The picture on the right is blocked with the phospho peptide.



Immunohistochemistry analysis of paraffin-embedded human brain, using SF1 (Phospho-Ser82) Antibody. The picture on the right is blocked with the phospho peptide.



Western blot analysis of lysates from HUVEC cells treated with anisomycin 25ug/ml 30', using SF1 (Phospho-Ser82) Antibody. The lane on the right is blocked with the phospho peptide.

Contact information

Orders: order.cn@immunoway.com
Support: support.cn@immunoway.com
Telephone: 400-8787-807(China)
Website: <http://www.immunoway.com.cn>
Address: 2200 Ringwood Ave San Jose, CA 95131 USA



Please scan the QR code
to access additional
product information:
**Splicing factor 1
(Phospho Ser82)
Rabbit pAb**

For Research Use Only. Not for Use in Diagnostic Procedures.

[Antibody](#) | [ELISA Kits](#) | [Protein](#) | [Reagents](#)