

ETS1 (Phospho Thr38) Rabbit pAb

CatalogNo: YP0878 **Orthogonal Validated** 

Key Features

Host Species

- Rabbit

Reactivity

- Human, Mouse, Rat

Applications

- WB, IHC, IF, ELISA

MW

- 54kD (Observed)

Isotype

- IgG

Storage

Storage* -15°C to -25°C/1 year (Do not lower than -25°C)

Formulation Liquid in PBS containing 50% glycerol, 0.5% BSA and 0.02% sodium azide.

Recommended Dilution Ratios

WB 1:500-1:2000

IHC 1:100-1:300

IF 1:200-1:1000

ELISA 1:10000

Not yet tested in other applications.

Basic Information

Clonality Polyclonal

Immunogen Information

Immunogen The antiserum was produced against synthesized peptide derived from human ETS1 around the phosphorylation site of Thr38. AA range:11-60

Specificity

Phospho-Ets-1 (T38) Polyclonal Antibody detects endogenous levels of Ets-1 protein only when phosphorylated at T38. The name of modified sites may be influenced by many factors, such as species (the modified site was not originally found in human samples) and the change of protein sequence (the previous protein sequence is incomplete, and the protein sequence may be prolonged with the development of protein sequencing technology). When naming, we will use the "numbers" in historical reference to keep the sites consistent with the reports. The antibody binds to the following modification sequence (lowercase letters are modification sites):LLtPS

Target Information

Gene name ETS1

Protein Name Protein C-ets-1

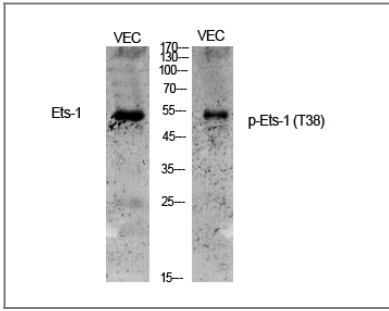
Organism	Gene ID	UniProt ID
Human	2113 ;	P14921 ;
Mouse	23871 ;	P27577 ;
Rat	24356 ;	P41156 ;

Cellular Localization Cytoplasm . Nucleus . Delocalizes from nucleus to cytoplasm when coexpressed with isoform Ets-1 p27. .

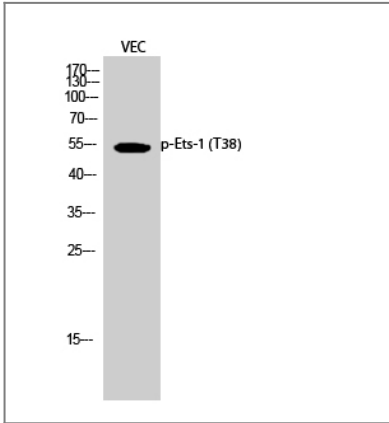
Tissue specificity Highly expressed within lymphoid cells. Isoforms c-ETS-1A and Ets-1 p27 are both detected in all fetal tissues tested , but vary with tissue type in adult tissues. None is detected in brain or kidney.

Function Disease:ETS is responsible for erythroblast and fibroblast transformation. The juxtaposition of the interferon and c-ETS-1 proto-oncogene may be involved in the pathogenesis of human monocytic leukemia. ,Function:Transcription factor. ,PTM:Sumoylated on Lys-15 and Lys-227 , preferentially by SUMO2; which inhibits transcriptional activity. ,PTM:Ubiquitinated; which induces proteasomal degradation. ,similarity:Belongs to the ETS family. ,similarity:Contains 1 ETS DNA-binding domain. ,similarity:Contains 1 PNT (pointed) domain. ,subunit:Interacts with MAF and MAFB (By similarity) . Binds to DAXX. Interacts with UBE2I. ,

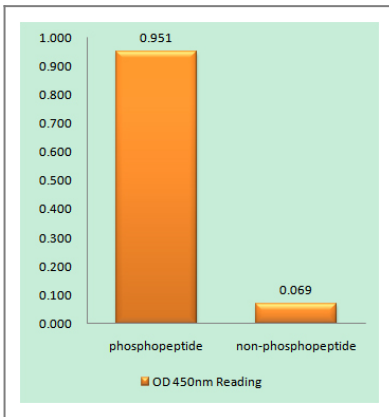
Validation Data



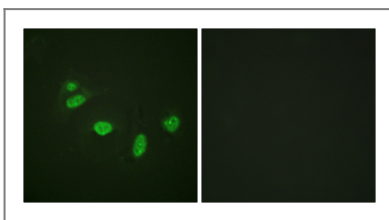
Western Blot analysis of various cells using Phospho-Ets-1 (T38) Polyclonal Antibody cells nucleus extracted by Minute TM Cytoplasmic and Nuclear Fractionation kit (SC-003, Inventbiotech, MN, USA).



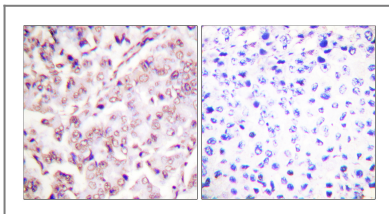
Western Blot analysis of VEC cells using Phospho-Ets-1 (T38) Polyclonal Antibody cells nucleus extracted by Minute TM Cytoplasmic and Nuclear Fractionation kit (SC-003, Inventbiotech, MN, USA).



Enzyme-Linked Immunosorbent Assay (Phospho-ELISA) for Immunogen Phosphopeptide (Phospho-left) and Non-Phosphopeptide (Phospho-right), using ETS1 (Phospho-Thr38) Antibody



Immunofluorescence analysis of HeLa cells, using ETS1 (Phospho-Thr38) Antibody. The picture on the right is blocked with the phospho peptide.



Immunohistochemistry analysis of paraffin-embedded human breast carcinoma, using ETS1 (Phospho-Thr38) Antibody. The picture on the right is blocked with the phospho peptide.

Contact information

Orders: order.cn@immunoway.com
Support: support.cn@immunoway.com
Telephone: 400-8787-807(China)
Website: http://www.immunoway.com.cn
Address: 2200 Ringwood Ave San Jose, CA 95131 USA



Please scan the QR code
to access additional
product information:
**ETS1 (Phospho
Thr38) Rabbit pAb**

For Research Use Only. Not for Use in Diagnostic Procedures.

[Antibody](#) | [ELISA Kits](#) | [Protein](#) | [Reagents](#)