

## Crk-L (Phospho Tyr207) Rabbit pAb

CatalogNo: YP0869

### Key Features

#### Host Species

- Rabbit

#### Reactivity

- Human, Mouse, Rat, Monkey

#### Applications

- WB, IHC, IF, ELISA

#### MW

- 39kD (Observed)

#### Isotype

- IgG

### Storage

**Storage\*** -15°C to -25°C/1 year (Do not lower than -25°C)

**Formulation** Liquid in PBS containing 50% glycerol, 0.5% BSA and 0.02% sodium azide.

### Recommended Dilution Ratios

**WB 1:500-1:2000**

**IHC 1:100-1:300**

**IF 1:200-1:1000**

**ELISA 1:5000**

**Not yet tested in other applications.**

### Basic Information

**Clonality** Polyclonal

### Immunogen Information

**Immunogen** The antiserum was produced against synthesized peptide derived from human CrkL around the phosphorylation site of Tyr207. AA range:173-222

**Specificity**

Phospho-Crk-L (Y207) Polyclonal Antibody detects endogenous levels of Crk-L protein only when phosphorylated at Y207. The name of modified sites may be influenced by many factors, such as species (the modified site was not originally found in human samples) and the change of protein sequence (the previous protein sequence is incomplete, and the protein sequence may be prolonged with the development of protein sequencing technology). When naming, we will use the "numbers" in historical reference to keep the sites consistent with the reports. The antibody binds to the following modification sequence (lowercase letters are modification sites):HAYAQ

---

## | Target Information

**Gene name** CRKL

**Protein Name** Crk-like protein

Organism	Gene ID	UniProt ID
Human	<a href="#">1399;</a>	<a href="#">P46109;</a>
Mouse	<a href="#">12929;</a>	<a href="#">P47941;</a>
Rat	<a href="#">287942;</a>	<a href="#">Q5U2U2;</a>

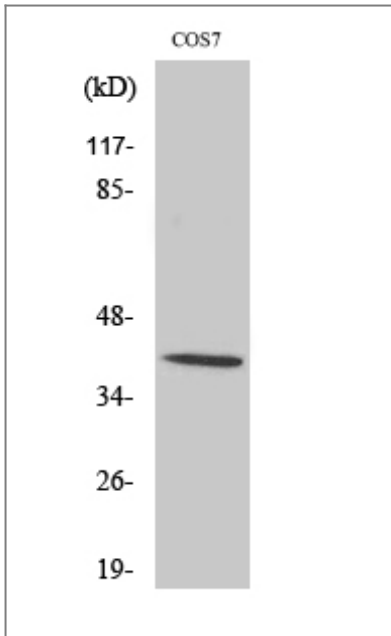
**Cellular Localization** endosome,cytosol,cell-cell adherens junction,extracellular exosome,

**Tissue specificity** Skin,Spleen,

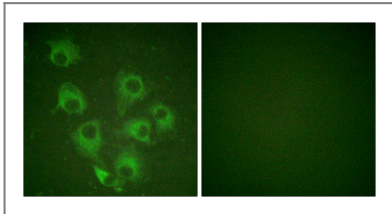
**Function** Function:May mediate the transduction of intracellular signals.,similarity:Contains 1 SH2 domain.,similarity:Contains 2 SH3 domains.,subunit:Interacts with INPP5D/SHIP1. Interacts with DOCK2 and EPOR. Interacts with phosphorylated CBLB and IRS4.,

---

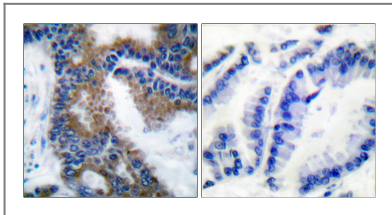
## | Validation Data



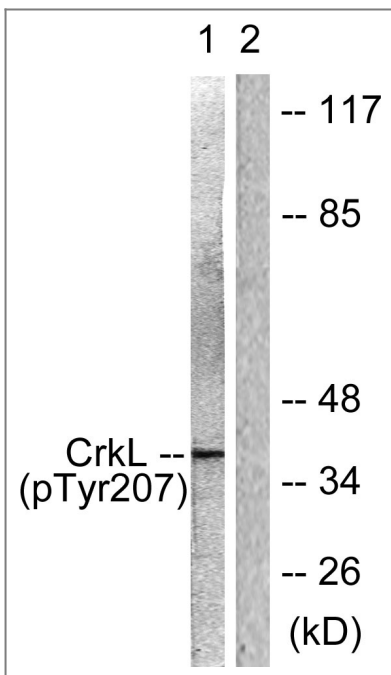
Western Blot analysis of various cells using Phospho-Crk-L (Y27) Polyclonal Antibody



Immunofluorescence analysis of HUVEC cells, using CrkL (Phospho-Tyr207) Antibody. The picture on the right is blocked with the phospho peptide.



Immunohistochemistry analysis of paraffin-embedded human lung carcinoma, using CrkL (Phospho-Tyr207) Antibody. The picture on the right is blocked with the phospho peptide.



Western blot analysis of lysates from COS7 cells, using CrkL (Phospho-Tyr207) Antibody. The lane on the right is blocked with the phospho peptide.

Orders: order.cn@immunoway.com  
Support: support.cn@immunoway.com  
Telephone: 400-8787-807(China)  
Website: <http://www.immunoway.com.cn>  
Address: 2200 Ringwood Ave San Jose, CA 95131 USA



Please scan the QR code  
to access additional  
product information:  
**Crk-L (Phospho  
Tyr207) Rabbit pAb**

---

For Research Use Only. Not for Use in Diagnostic Procedures.

[Antibody](#) | [ELISA Kits](#) | [Protein](#) | [Reagents](#)