

## GluR-2 (Phospho Ser880) Rabbit pAb

CatalogNo: YP0849

### Key Features

#### Host Species

- Rabbit

#### Reactivity

- Human, Mouse, Rat

#### Applications

- WB, IHC, IF, ELISA

#### MW

- 99kD (Observed)

#### Isotype

- IgG

### Storage

**Storage\*** -15°C to -25°C/1 year (Do not lower than -25°C)

**Formulation** Liquid in PBS containing 50% glycerol, 0.5% BSA and 0.02% sodium azide.

### Recommended Dilution Ratios

**WB 1:500-1:2000**

**IHC 1:100-1:300**

**ELISA 1:20000**

**IF 1:50-200**

### Basic Information

**Clonality** Polyclonal

### Immunogen Information

**Immunogen** The antiserum was produced against synthesized peptide derived from human GluR2 around the phosphorylation site of Ser880. AA range: 834-883

**Specificity**

Phospho-GluR-2 (S880) Polyclonal Antibody detects endogenous levels of GluR-2 protein only when phosphorylated at S880. The name of modified sites may be influenced by many factors, such as species (the modified site was not originally found in human samples) and the change of protein sequence (the previous protein sequence is incomplete, and the protein sequence may be prolonged with the development of protein sequencing technology). When naming, we will use the "numbers" in historical reference to keep the sites consistent with the reports. The antibody binds to the following modification sequence (lowercase letters are modification sites): IESVK

## | Target Information

**Gene name** GRIA2 GLUR2

**Protein Name** Glutamate receptor 2

Organism	Gene ID	UniProt ID
Human	<a href="#">2891</a> ;	<a href="#">P42262</a> ;
Mouse	<a href="#">14800</a> ;	<a href="#">P23819</a> ;
Rat	<a href="#">29627</a> ;	<a href="#">P19491</a> ;

**Cellular Localization**

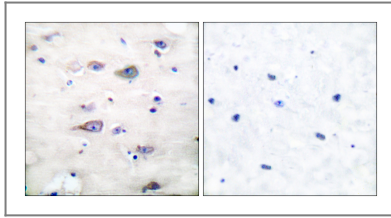
Cell membrane ; Multi-pass membrane protein . Endoplasmic reticulum membrane ; Multi-pass membrane protein . Cell junction, synapse, postsynaptic cell membrane ; Multi-pass membrane protein . Cell junction, synapse, postsynaptic density membrane ; Multi-pass membrane protein . Interaction with CACNG2, CNIH2 and CNIH3 promotes cell surface expression (By similarity). Displays a somatodendritic localization and is excluded from axons in neurons (By similarity). .

**Tissue specificity** Brain,

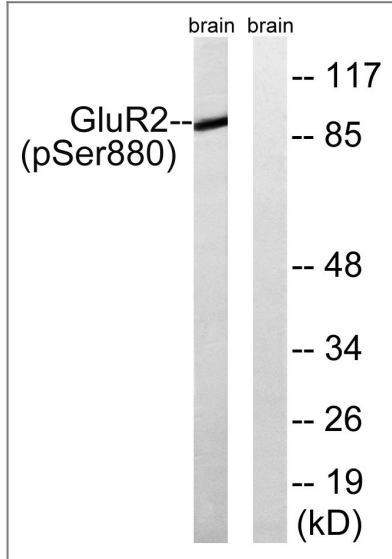
**Function**

Function: Ionotropic glutamate receptor. L-glutamate acts as an excitatory neurotransmitter at many synapses in the central nervous system. Binding of the excitatory neurotransmitter L-glutamate induces a conformation change, leading to the opening of the cation channel, and thereby converts the chemical signal to an electrical impulse. The receptor then desensitizes rapidly and enters a transient inactive state, characterized by the presence of bound agonist. ,miscellaneous: The postsynaptic actions of Glu are mediated by a variety of receptors that are named according to their selective agonists. This receptor binds AMPA (quisqualate) > glutamate > kainate. ,PTM: Palmitoylated. Depalmitoylated upon glutamate stimulation. Cys-610 palmitoylation leads to Golgi retention and decreased cell surface expression. In contrast, Cys-836 palmitoylation does not affect cell surface expression but regulates stimulation-dependent endocytosis. ,RNA editing: Partially edited. Fully edited in the brain. Heteromerically expressed edited GLUR2 (R) receptor complexes are impermeable to calcium, whereas the unedited (Q) forms are highly permeable to divalent ions. ,similarity: Belongs to the glutamate-gated ion channel (TC 1.A.10) family. ,subunit: Homotetramer or heterotetramer of pore-forming glutamate receptor subunits. Tetramers may be formed by the dimerization of dimers. May interact with MPP4. Forms a ternary complex with GRIP1 and CSPG4. Interacts with PRKCABP, GRIP1 and GRIP2. ,

## Validation Data



Immunohistochemistry analysis of paraffin-embedded human brain, using GluR2 (Phospho-Ser880) Antibody. The picture on the right is blocked with the phospho peptide.



Western blot analysis of lysates from mouse brain, using GluR2 (Phospho-Ser880) Antibody. The lane on the right is blocked with the phospho peptide.

## Contact information

Orders: [order.cn@immunoway.com](mailto:order.cn@immunoway.com)  
Support: [support.cn@immunoway.com](mailto:support.cn@immunoway.com)  
Telephone: 400-8787-807(China)  
Website: <http://www.immunoway.com.cn>  
Address: 2200 Ringwood Ave San Jose, CA 95131 USA



Please scan the QR code to access additional product information:  
**GluR-2 (Phospho Ser880) Rabbit pAb**

For Research Use Only. Not for Use in Diagnostic Procedures.

[Antibody](#) | [ELISA Kits](#) | [Protein](#) | [Reagents](#)