

## PC-PLD2 (Phospho Tyr169) Rabbit pAb

CatalogNo: YP0829 **Orthogonal Validated** 

### Key Features

#### Host Species

- Rabbit

#### Reactivity

- Human, Mouse, Rat

#### Applications

- WB, IHC, IF, ELISA

#### MW

- 95kD (Observed)

#### Isotype

- IgG

### Storage

**Storage\*** -15°C to -25°C/1 year (Do not lower than -25°C)

**Formulation** Liquid in PBS containing 50% glycerol, 0.5% BSA and 0.02% sodium azide.

### Recommended Dilution Ratios

**WB 1:500-1:2000**

**IHC 1:100-1:300**

**ELISA 1:10000**

**IF 1:50-200**

### Basic Information

**Clonality** Polyclonal

### Immunogen Information

**Immunogen** The antiserum was produced against synthesized peptide derived from human PLD2 around the phosphorylation site of Tyr169. AA range:136-185

## Specificity

Phospho-PC-PLD2 (Y169) Polyclonal Antibody detects endogenous levels of PC-PLD2 protein only when phosphorylated at Y169. The name of modified sites may be influenced by many factors, such as species (the modified site was not originally found in human samples) and the change of protein sequence (the previous protein sequence is incomplete, and the protein sequence may be prolonged with the development of protein sequencing technology). When naming, we will use the "numbers" in historical reference to keep the sites consistent with the reports. The antibody binds to the following modification sequence (lowercase letters are modification sites):ENyLN

---

## | Target Information

**Gene name** PLD2

**Protein Name** Phospholipase D2

| Organism | Gene ID                 | UniProt ID               |
|----------|-------------------------|--------------------------|
| Human    | <a href="#">5338</a> ;  | <a href="#">O14939</a> ; |
| Mouse    | <a href="#">18806</a> ; | <a href="#">P97813</a> ; |
| Rat      | <a href="#">25097</a> ; | <a href="#">P70498</a> ; |

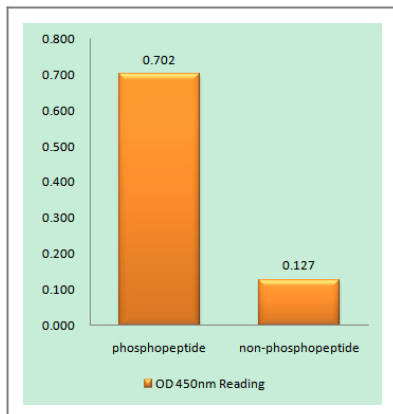
**Cellular Localization** Cell membrane ; Lipid-anchor .

**Tissue specificity** Ubiquitous.

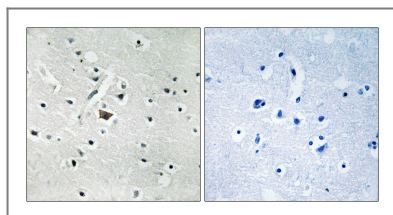
**Function** Catalytic activity:A phosphatidylcholine + H<sub>2</sub>O = choline + a phosphatidate. ,enzyme regulation:Stimulated by phosphatidylinositol 4,5-bisphosphate and activated by the ADP-ribosylation factor-1 (ARF-1) . ,Function:May have a role in signal-induced cytoskeletal regulation and/or endocytosis. ,online information:Phospholipase D entry ,similarity:Belongs to the phospholipase D family. ,similarity:Contains 1 PH domain. ,similarity:Contains 1 PX (phox homology) domain. ,similarity:Contains 2 PLD phosphodiesterase domains. ,subunit:Interacts with EGFR (By similarity) . Interacts with PIP5K1A. ,tissue specificity:Ubiquitous. ,

---

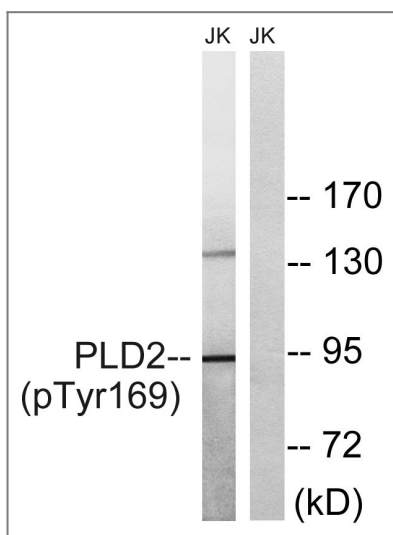
## | Validation Data



Enzyme-Linked Immunosorbent Assay (Phospho-ELISA) for Immunogen Phosphopeptide (Phospho-left) and Non-Phosphopeptide (Phospho-right), using PLD2 (Phospho-Tyr169) Antibody



Immunohistochemistry analysis of paraffin-embedded human brain, using PLD2 (Phospho-Tyr169) Antibody. The picture on the right is blocked with the phospho peptide.



Western blot analysis of lysates from Jurkat cells treated with TNF 20ng/ml 30', using PLD2 (Phospho-Tyr169) Antibody. The lane on the right is blocked with the phospho peptide.

## Contact information

Orders: [order.cn@immunoway.com](mailto:order.cn@immunoway.com)  
 Support: [support.cn@immunoway.com](mailto:support.cn@immunoway.com)  
 Telephone: 400-8787-807(China)  
 Website: <http://www.immunoway.com.cn>  
 Address: 2200 Ringwood Ave San Jose, CA 95131 USA



Please scan the QR code to access additional product information:  
**PC-PLD2 (Phospho Tyr169) Rabbit pAb**