

## NUDC (Phospho Ser326) Rabbit pAb

CatalogNo: YP0826

### Key Features

#### Host Species

- Rabbit

#### Reactivity

- Human, Mouse, Rat

#### Applications

- WB, IHC, IF, ELISA

#### MW

- 45kD (Observed)

#### Isotype

- IgG

### Storage

**Storage\*** -15°C to -25°C/1 year (Do not lower than -25°C)

**Formulation** Liquid in PBS containing 50% glycerol, 0.5% BSA and 0.02% sodium azide.

### Recommended Dilution Ratios

**WB 1:500-1:2000**

**IHC 1:100-1:300**

**ELISA 1:5000**

**IF 1:50-200**

### Basic Information

**Clonality** Polyclonal

### Immunogen Information

**Immunogen** The antiserum was produced against synthesized peptide derived from human NudC around the phosphorylation site of Ser326. AA range: 282-331

## Specificity

Phospho-NUDC (S326) Polyclonal Antibody detects endogenous levels of NUDC protein only when phosphorylated at S326. The name of modified sites may be influenced by many factors, such as species (the modified site was not originally found in human samples) and the change of protein sequence (the previous protein sequence is incomplete, and the protein sequence may be prolonged with the development of protein sequencing technology). When naming, we will use the "numbers" in historical reference to keep the sites consistent with the reports. The antibody binds to the following modification sequence (lowercase letters are modification sites):DFsKA

## Target Information

**Gene name** NUDC

**Protein Name** Nuclear migration protein nudC

Organism	Gene ID	UniProt ID
Human	<a href="#">10726</a> ;	<a href="#">Q9Y266</a> ;
Mouse	<a href="#">18221</a> ;	<a href="#">Q35685</a> ;
Rat	<a href="#">29648</a> ;	<a href="#">Q63525</a> ;

### Cellular Localization

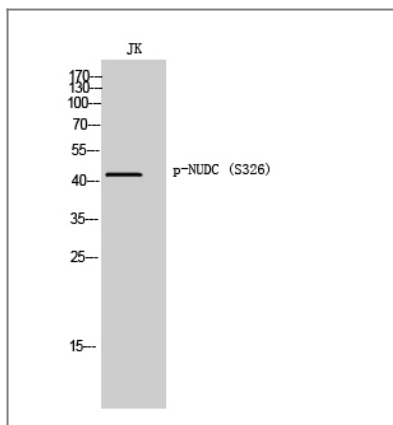
Cytoplasm, cytoskeleton. Nucleus . Cytoplasm, cytoskeleton, spindle . Midbody . In a filamentous pattern adjacent to the nucleus of migrating cerebellar granule cells. Colocalizes with tubulin and dynein and with the microtubule organizing center. Distributed throughout the cytoplasm of non-migrating cells. A small proportion is nuclear, in a punctate pattern. Localizes to the mitotic spindle in a EML4-dependent manner (PubMed:25789526). .

**Tissue specificity** Ubiquitous. Highly expressed in fetal liver, kidney, lung and brain. Highly expressed in adult pancreas, kidney, skeletal muscle, liver, lung, placenta, prostate, brain and heart.

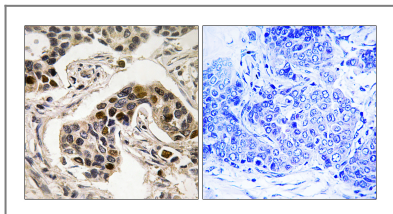
### Function

Function:Plays a role in neurogenesis and neuronal migration (By similarity). Necessary for correct formation of mitotic spindles and chromosome separation during mitosis. Necessary for cytokinesis and cell proliferation.,induction:Up-regulated in actively dividing hematopoietic precursor cells. Up-regulated in cultured erythroleukemia TF-1 cells by granulocyte-macrophage colony-stimulating factor. Strongly down-regulated during maturation of erythroid precursor cells.,PTM:Reversibly phosphorylated on serine residues during the M phase of the cell cycle. Phosphorylation on Ser-274 and Ser-326 is necessary for correct formation of mitotic spindles and chromosome separation during mitosis. Phosphorylated by PLK and other kinases.,similarity:Belongs to the nudC family.,similarity:Contains 1 CS domain.,subcellular location:In a filamentous pattern adjacent to the nucleus of migrating cerebellar granule cells. Colocalizes with tubulin and dynein and with the microtubule organizing center. Distributed throughout the cytoplasm of non-migrating cells. A small proportion is nuclear, in a punctate pattern.,subunit:Binds PLK1. Binds PAFAH1B1 (By similarity). Part of a complex containing PLK1, NUDC, dynein and dynactin.,tissue specificity:Ubiquitous. Highly expressed in fetal liver, kidney, lung and brain. Highly expressed in adult pancreas, kidney, skeletal muscle, liver, lung, placenta, prostate, brain and heart.,

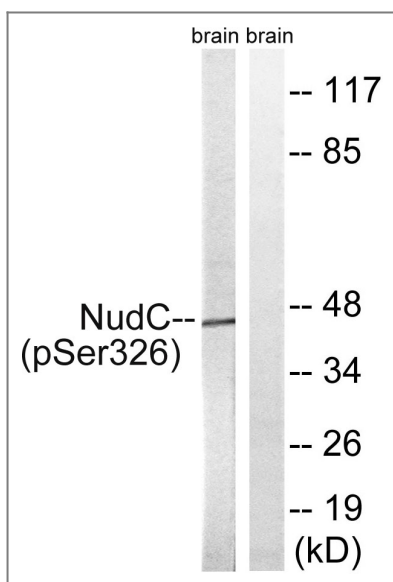
## Validation Data



Western Blot analysis of JK cells using Phospho-NUDC (S326) Polyclonal Antibody



Immunohistochemistry analysis of paraffin-embedded human breast carcinoma, using NudC (Phospho-Ser326) Antibody. The picture on the right is blocked with the phospho peptide.



Western blot analysis of lysates from rat brain, using NudC (Phospho-Ser326) Antibody. The lane on the right is blocked with the phospho peptide.

## Contact information

Orders: [order.cn@immunoway.com](mailto:order.cn@immunoway.com)  
Support: [support.cn@immunoway.com](mailto:support.cn@immunoway.com)  
Telephone: 400-8787-807(China)  
Website: <http://www.immunoway.com.cn>  
Address: 2200 Ringwood Ave San Jose, CA 95131 USA



Please scan the QR code to access additional product information:  
**NUDC (Phospho Ser326) Rabbit pAb**