

CRMP-2 (Phospho Thr509) Rabbit pAb

CatalogNo: YP0814 **Orthogonal Validated** 

Key Features

Host Species

- Rabbit

Reactivity

- Human, Mouse, Rat

Applications

- WB, IHC, IF, ELISA

MW

- 50kD (Observed)

Isotype

- IgG

Storage

Storage* -15°C to -25°C/1 year (Do not lower than -25°C)

Formulation Liquid in PBS containing 50% glycerol, 0.5% BSA and 0.02% sodium azide.

Recommended Dilution Ratios

WB 1:500-1:2000

IHC 1:100-1:300

ELISA 1:5000

IF 1:50-200

Basic Information

Clonality Polyclonal

Immunogen Information

Immunogen The antiserum was produced against synthesized peptide derived from human CRMP-2 around the phosphorylation site of Thr509. AA range:475-524

Specificity

Phospho-CRMP-2 (T509) Polyclonal Antibody detects endogenous levels of CRMP-2 protein only when phosphorylated at T509. The name of modified sites may be influenced by many factors, such as species (the modified site was not originally found in human samples) and the change of protein sequence (the previous protein sequence is incomplete, and the protein sequence may be prolonged with the development of protein sequencing technology). When naming, we will use the "numbers" in historical reference to keep the sites consistent with the reports. The antibody binds to the following modification sequence (lowercase letters are modification sites):SVtPK

Target Information

Gene name DPYSL2

Protein Name Dihydropyrimidinase-related protein 2

| Organism | Gene ID | UniProt ID |
|----------|-------------------------|--------------------------|
| Human | 1808 ; | Q16555 ; |
| Mouse | 12934 ; | O08553 ; |
| Rat | 25416 ; | P47942 ; |

Cellular Localization

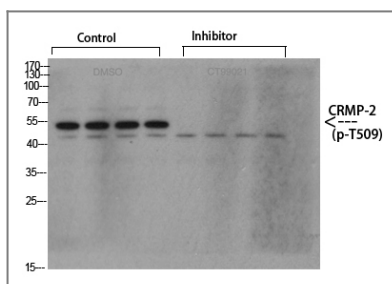
Cytoplasm, cytosol . Cytoplasm, cytoskeleton . Membrane . Tightly but non-covalently associated with membranes.

Tissue specificity Ubiquitous.

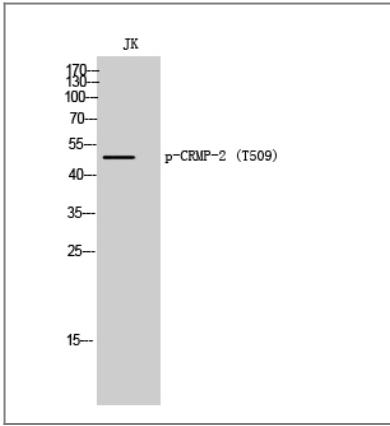
Function

Function:Necessary for signaling by class 3 semaphorins and subsequent remodeling of the cytoskeleton. Plays a role in axon guidance, neuronal growth cone collapse and cell migration.,PTM:3F4, a monoclonal antibody which strongly stains neurofibrillary tangles in Alzheimer disease brains, specifically labels DPYSL2 when phosphorylated on Ser-518, Ser-522 and Thr-509.,similarity:Belongs to the DHOase family. Hydantoinase/dihydropyrimidinase subfamily.,subunit:Homotetramer, and heterotetramer with CRMP1, DPYSL3, DPYSL4 or DPYSL5 (By similarity). Interacts through its C-terminus with the C-terminus of CYFIP1/SRA1. Interacts with HTR4.,tissue specificity:Ubiquitous.,

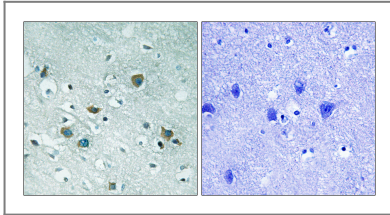
Validation Data



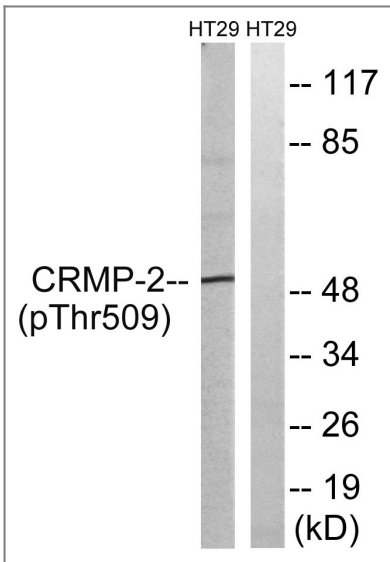
Western Blot analysis of various cells using primary antibody diluted at 1:1000(4°C overnight). Secondary antibody:Goat Anti-rabbit IgG IRDye 800(diluted at 1:5000, 25°C, 1 hour). Cell lysate was extracted by Minute™ Plasma Membrane Protein Isolation and Cell Fractionation Kit(SM-005, Inventbiotech,MN,USA).



Western Blot analysis of JK cells using Phospho-CRMP-2 (T509) Polyclonal Antibody



Immunohistochemistry analysis of paraffin-embedded human brain, using CRMP-2 (Phospho-Thr509) Antibody. The picture on the right is blocked with the phospho peptide.



Western blot analysis of lysates from HT29 cells treated with heat shock, using CRMP-2 (Phospho-Thr509) Antibody. The lane on the right is blocked with the phospho peptide.

Contact information

Orders: order.cn@immunoway.com
 Support: support.cn@immunoway.com
 Telephone: 400-8787-807(China)
 Website: <http://www.immunoway.com.cn>
 Address: 2200 Ringwood Ave San Jose, CA 95131 USA



Please scan the QR code to access additional product information:
CRMP-2 (Phospho Thr509) Rabbit pAb