

## Ephrin-B1/2/3 (Phospho Tyr324) Rabbit pAb

CatalogNo: YP0812 **Orthogonal Validated** 

### Key Features

#### Host Species

- Rabbit

#### Reactivity

- Human, Mouse, Rat

#### Applications

- WB, IHC, IF, ELISA

#### MW

- 46kD (Observed)

#### Isotype

- IgG

### Storage

**Storage\*** -15°C to -25°C/1 year (Do not lower than -25°C)

**Formulation** Liquid in PBS containing 50% glycerol, 0.5% BSA and 0.02% sodium azide.

### Recommended Dilution Ratios

**WB 1:500-1:2000**

**IHC 1:100-1:300**

**ELISA 1:20000**

**IF 1:50-200**

### Basic Information

**Clonality** Polyclonal

### Immunogen Information

**Immunogen** The antiserum was produced against synthesized peptide derived from human Ephrin B1/B2/B3 around the phosphorylation site of Tyr324. AA range:290-339

## Specificity

Phospho-Ephrin-B1/2/3 (Y324) Polyclonal Antibody detects endogenous levels of Ephrin-B1/2/3 protein only when phosphorylated at Y324. The name of modified sites may be influenced by many factors, such as species (the modified site was not originally found in human samples) and the change of protein sequence (the previous protein sequence is incomplete, and the protein sequence may be prolonged with the development of protein sequencing technology). When naming, we will use the "numbers" in historical reference to keep the sites consistent with the reports. The antibody binds to the following modification sequence (lowercase letters are modification sites):GDyGH

## Target Information

**Gene name** EFNB1/EFNB2/EFNB3

**Protein Name** Ephrin-B1/2/3

Organism	Gene ID	UniProt ID
Human	<a href="#">1947</a> ; <a href="#">1948</a> ; <a href="#">1949</a> ;	<a href="#">P98172</a> ; <a href="#">P52799</a> ; <a href="#">Q15768</a> ;
Mouse	<a href="#">13641</a> ; <a href="#">13642</a> ; <a href="#">13643</a> ;	
Rat		<a href="#">P52796</a> ;

### Cellular Localization

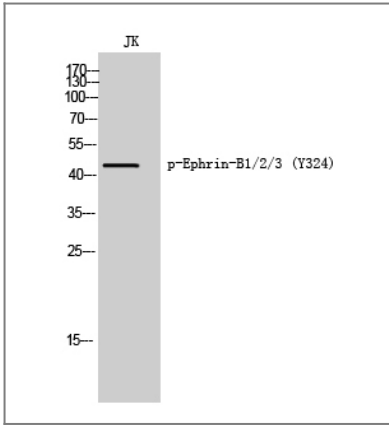
Cell membrane ; Single-pass type I membrane protein . Membrane raft . May recruit GRIP1 and GRIP2 to membrane raft domains. . ; [Ephrin-B1 C-terminal fragment]: Cell membrane ; Single-pass type I membrane protein . ; [Ephrin-B1 intracellular domain]: Nucleus . Colocalizes with ZHX2 in the nucleus. .

**Tissue specificity** Widely expressed (PubMed:8070404, PubMed:7973638). Detected in both neuronal and non-neuronal tissues (PubMed:8070404, PubMed:7973638). Seems to have particularly strong expression in retina, sciatic nerve, heart and spinal cord (PubMed:7973638).

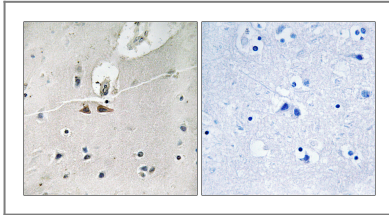
### Function

Disease:Defects in EFNB1 are a cause of craniofrontonasal syndrome (CFNS) [MIM:304110]; also known as craniofrontonasal dysplasia (CFND). CFNS is an X-linked inherited syndrome characterized by hypertelorism, coronal synostosis with brachycephaly, downslanting palpebral fissures, clefting of the nasal tip, joint anomalies, longitudinally grooved fingernails and other digital anomalies.,Function:Binds to the receptor tyrosine kinases EPHB1 and EPHA1. Binds to, and induce the collapse of, commissural axons/growth cones in vitro. May play a role in constraining the orientation of longitudinally projecting axons.,induction:By TNF-alpha.,PTM:Inducible phosphorylation of tyrosine residues in the cytoplasmic domain.,similarity:Belongs to the ephrin family.,subunit:Interacts with GRIP1 and GRIP2.,tissue specificity:Heart, placenta, lung, liver, skeletal muscle, kidney, pancreas.,

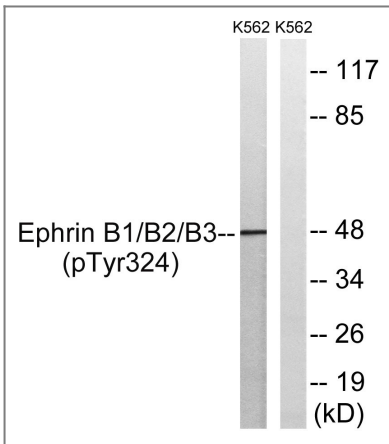
## Validation Data



Western Blot analysis of JK cells using Phospho-Ephrin-B1/2/3 (Y324) Polyclonal Antibody



Immunohistochemistry analysis of paraffin-embedded human brain, using Ephrin B1/B2/B3 (Phospho-Tyr324) Antibody. The picture on the right is blocked with the phospho peptide.



Western blot analysis of lysates from K562 cells treated with serum 20% 15', using Ephrin B1/B2/B3 (Phospho-Tyr324) Antibody. The lane on the right is blocked with the phospho peptide.

## Contact information

Orders: order.cn@immunoway.com  
 Support: support.cn@immunoway.com  
 Telephone: 400-8787-807(China)  
 Website: <http://www.immunoway.com.cn>  
 Address: 2200 Ringwood Ave San Jose, CA 95131 USA



Please scan the QR code to access additional product information:  
**Ephrin-B1/2/3 (Phospho Tyr324) Rabbit pAb**