

NMDAR2B (Phospho Tyr1336) Rabbit pAb

CatalogNo: YP0809 **Orthogonal Validated** 

Key Features

Host Species

- Rabbit

Reactivity

- Human, Mouse, Rat

Applications

- WB, IHC, IF, ELISA

MW

- 150kD (Observed)

Isotype

- IgG

Storage

Storage* -15°C to -25°C/1 year (Do not lower than -25°C)

Formulation Liquid in PBS containing 50% glycerol, 0.5% BSA and 0.02% sodium azide.

Recommended Dilution Ratios

WB 1:500-1:2000

IHC 1:100-1:300

ELISA 1:10000

IF 1:50-200

Basic Information

Clonality Polyclonal

Immunogen Information

Immunogen The antiserum was produced against synthesized peptide derived from human NMDAR2B around the phosphorylation site of Tyr1336. AA range:1302-1351

Specificity Phospho-NMDAε2 (Y1336) Polyclonal Antibody detects endogenous levels of NMDAε2 protein only when phosphorylated at Y1336. The name of modified sites may be influenced by many factors, such as species (the modified site was not originally found in human samples) and the change of protein sequence (the previous protein sequence is incomplete, and the protein sequence may be prolonged with the development of protein sequencing technology). When naming, we will use the "numbers" in historical reference to keep the sites consistent with the reports. The antibody binds to the following modification sequence (lowercase letters are modification sites):SPyAH

| Target Information

Gene name GRIN2B

Protein Name Glutamate [NMDA] receptor subunit epsilon-2

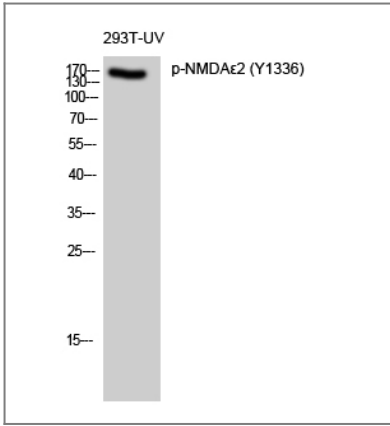
Organism	Gene ID	UniProt ID
Human	2904 ;	Q13224 ;
Mouse	14812 ;	Q01097 ;
Rat	24410 ;	Q00960 ;

Cellular Localization Cell membrane ; Multi-pass membrane protein . Cell junction, synapse, postsynaptic cell membrane ; Multi-pass membrane protein . Late endosome . Lysosome . Cytoplasm, cytoskeleton . Co-localizes with the motor protein KIF17 along microtubules. .

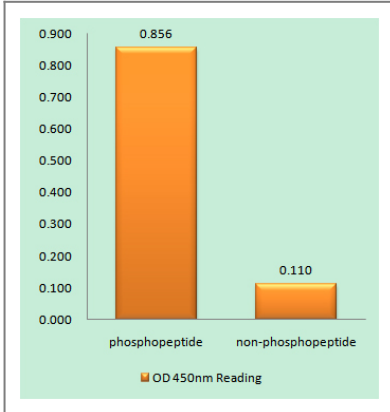
Tissue specificity Primarily found in the fronto-parieto-temporal cortex and hippocampus pyramidal cells, lower expression in the basal ganglia.

Function Function:NMDA receptor subtype of glutamate-gated ion channels with high calcium permeability and voltage-dependent sensitivity to magnesium. Mediated by glycine.,similarity:Belongs to the glutamate-gated ion channel (TC 1.A.10) family.,subunit:Forms heteromeric channel of a zeta subunit (GRIN1), a epsilon subunit (GRIN2A, GRIN2B, GRIN2C or GRIN2D) and a third subunit (GRIN3A or GRIN3B). Found in a complex with GRIN1 and GRIN3B. Found in a complex with GRIN1, GRIN3A and PPP2CB. Interacts with PDZ domains of INADL and DLG4. Interacts with HIP1 (By similarity). Interacts with MAGI3.,tissue specificity:Primarily found in the fronto-parieto-temporal cortex and hippocampus pyramidal cells, lower expression in the basal ganglia.,

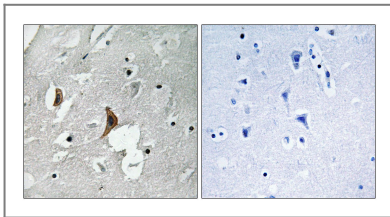
| Validation Data



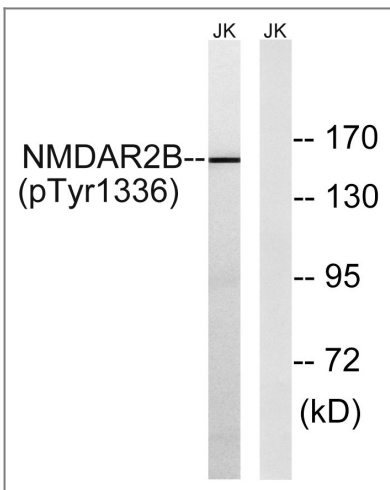
Western Blot analysis of 293T-UV cells using Phospho-NMDAε2 (Y1336) Polyclonal Antibody diluted at 1:500



Enzyme-Linked Immunosorbent Assay (Phospho-ELISA) for Immunogen Phosphopeptide (Phospho-left) and Non-Phosphopeptide (Phospho-right), using NMDAR2B (Phospho-Tyr1336) Antibody



Immunohistochemistry analysis of paraffin-embedded human brain, using NMDAR2B (Phospho-Tyr1336) Antibody. The picture on the right is blocked with the phospho peptide.



Western blot analysis of lysates from Jurkat cells treated with TNF 20ng/ml 30', using NMDAR2B (Phospho-Tyr1336) Antibody. The lane on the right is blocked with the phospho peptide.

Contact information

Orders: order.cn@immunoway.com
Support: support.cn@immunoway.com
Telephone: 400-8787-807(China)
Website: <http://www.immunoway.com.cn>
Address: 2200 Ringwood Ave San Jose, CA 95131 USA



Please scan the QR code
to access additional
product information:
**NMDAR2B (Phospho
Tyr1336) Rabbit
pAb**

For Research Use Only. Not for Use in Diagnostic Procedures.

[Antibody](#) | [ELISA Kits](#) | [Protein](#) | [Reagents](#)