

FRS2 (Phospho Tyr436) Rabbit pAb

CatalogNo: YP0805 **Orthogonal Validated** 

Key Features

Host Species

- Rabbit

Reactivity

- Human, Mouse, Monkey

Applications

- WB, IHC, IF, ELISA

MW

- 65kD (Observed)

Isotype

- IgG

Storage

Storage* -15°C to -25°C/1 year (Do not lower than -25°C)

Formulation Liquid in PBS containing 50% glycerol, 0.5% BSA and 0.02% sodium azide.

Recommended Dilution Ratios

WB 1:500-1:2000

IHC 1:100-1:300

ELISA 1:10000

IF 1:50-200

Basic Information

Clonality Polyclonal

Immunogen Information

Immunogen The antiserum was produced against synthesized peptide derived from human FRS2 around the phosphorylation site of Tyr436. AA range:402-451

Specificity

Phospho-FRS2 (Y436) Polyclonal Antibody detects endogenous levels of FRS2 protein only when phosphorylated at Y436. The name of modified sites may be influenced by many factors, such as species (the modified site was not originally found in human samples) and the change of protein sequence (the previous protein sequence is incomplete, and the protein sequence may be prolonged with the development of protein sequencing technology). When naming, we will use the "numbers" in historical reference to keep the sites consistent with the reports. The antibody binds to the following modification sequence (lowercase letters are modification sites):LNyIQ

Target Information

Gene name FRS2

Protein Name Fibroblast growth factor receptor substrate 2

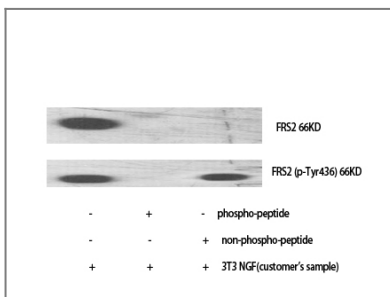
Organism	Gene ID	UniProt ID
Human	10818 ;	Q8WU20 ;
Mouse	327826 ;	Q8C180 ;

Cellular Localization Endomembrane system. Cytoplasmic, membrane-bound.

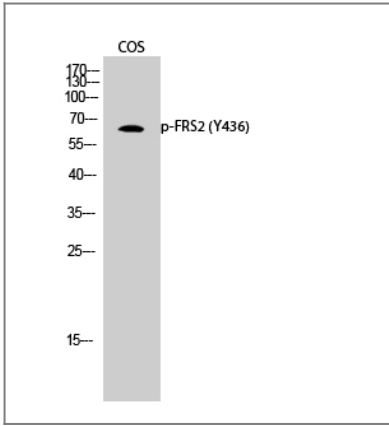
Tissue specificity Highly expressed in heart, brain, spleen, lung, liver, skeletal muscle, kidney and testis.

Function Function:Adapter protein that links FGR and NGF receptors to downstream signaling pathways. Involved in the activation of MAP kinases. Modulates signaling via SHC1 by competing for a common binding site on NTRK1.,PTM:Phosphorylated on tyrosine residues upon stimulation by NGF.,PTM:Ubiquitinated when tyrosine phosphorylated and in a complex with GRB2. The unphosphorylated form is not subject to ubiquitination.,sequence Caution:Translated as stop.,similarity:Contains 1 IRS-type PTB domain.,subcellular location:Cytoplasmic, membrane-bound.,subunit:Part of a complex containing FRS2, GRB2 and SOS1. Part of a complex containing GRB2 and CBL. Binds RET (By similarity). Binds FGFR1, SUC1, NTRK1, NTRK2, NTRK3 and SRC. The tyrosine-phosphorylated protein binds the SH2 domains of GRB2 and PTPN11.,tissue specificity:Highly expressed in heart, brain, spleen, lung, liver, skeletal muscle, kidney and testis.,

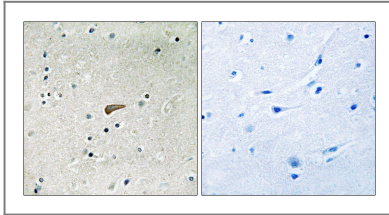
Validation Data



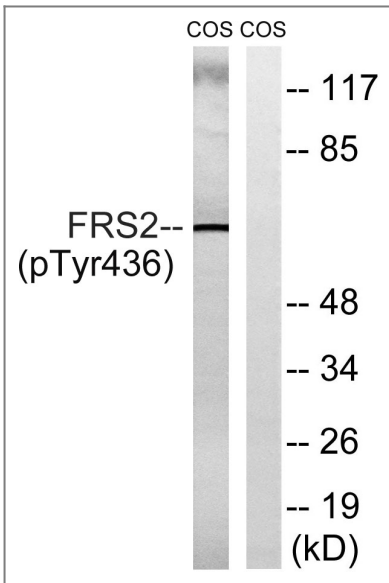
Western Blot analysis of various cells using Phospho-FRS2 (Y436) Polyclonal Antibody



Western Blot analysis of COS cells using Phospho-FRS2 (Y436) Polyclonal Antibody



Immunohistochemistry analysis of paraffin-embedded human brain, using FRS2 (Phospho-Tyr436) Antibody. The picture on the right is blocked with the phospho peptide.



Western blot analysis of lysates from COS7 cells, using FRS2 (Phospho-Tyr436) Antibody. The lane on the right is blocked with the phospho peptide.

Contact information

Orders: order.cn@immunoway.com
 Support: support.cn@immunoway.com
 Telephone: 400-8787-807(China)
 Website: <http://www.immunoway.com.cn>
 Address: 2200 Ringwood Ave San Jose, CA 95131 USA



Please scan the QR code to access additional product information:

FRS2 (Phospho Tyr436) Rabbit pAb