

## MerTK/Tyro3 (Phospho Tyr749/681) Rabbit pAb

CatalogNo: YP0788 **Orthogonal Validated** 

### Key Features

#### Host Species

- Rabbit

#### Reactivity

- Human, Mouse, Rat

#### Applications

- WB, IHC, IF, ELISA

#### MW

- 97kD (Observed)

#### Isotype

- IgG

### Storage

**Storage\*** -15°C to -25°C/1 year (Do not lower than -25°C)

**Formulation** Liquid in PBS containing 50% glycerol, 0.5% BSA and 0.02% sodium azide.

### Recommended Dilution Ratios

**WB 1:500-1:2000**

**IHC 1:100-1:300**

**ELISA 1:10000**

**IF 1:50-200**

### Basic Information

**Clonality** Polyclonal

### Immunogen Information

**Immunogen** The antiserum was produced against synthesized peptide derived from human MER/SKY around the phosphorylation site of Tyr749/681. AA range: 716-765

## Specificity

This antibody detects endogenous levels of MerTK/Tyro3 only when phosphorylated at Human:Y749/681, Mouse:Y744/671, Rat:Y744/671..The name of modified sites may be influenced by many factors, such as species (the modified site was not originally found in human samples) and the change of protein sequence (the previous protein sequence is incomplete, and the protein sequence may be prolonged with the development of protein sequencing technology). When naming, we will use the "numbers" in historical reference to keep the sites consistent with the reports. The antibody binds to the following modification sequence (lowercase letters are modification sites):KlySG

## Target Information

**Gene name** MERTK/TYRO3

**Protein Name** Tyrosine-protein kinase Mer/Tyrosine-protein kinase receptor TYRO3

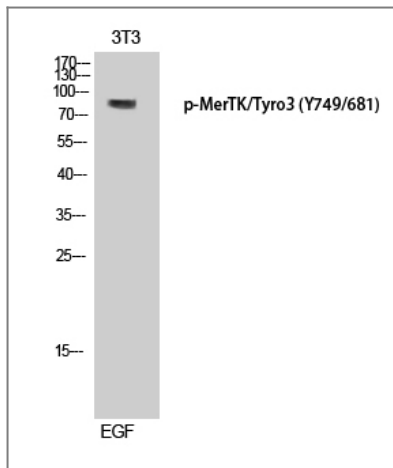
Organism	Gene ID	UniProt ID
Human	<a href="#">10461</a> ; <a href="#">7301</a> ;	<a href="#">Q12866</a> ; <a href="#">Q06418</a> ;
Mouse	<a href="#">17289</a> ; <a href="#">22174</a> ;	
Rat	<a href="#">65037</a> ; <a href="#">25232</a> ;	<a href="#">P57097</a> ; <a href="#">P55146</a> ;

**Cellular Localization** Cell membrane ; Single-pass type I membrane protein .

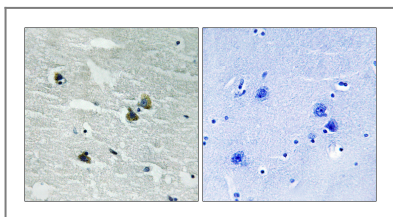
**Tissue specificity** Not expressed in normal B- and T-lymphocytes but is expressed in numerous neoplastic B- and T-cell lines. Highly expressed in testis, ovary, prostate, lung, and kidney, with lower expression in spleen, small intestine, colon, and liver.

**Function** Catalytic activity:ATP + a [protein]-L-tyrosine = ADP + a [protein]-L-tyrosine phosphate.,Disease:Defects in MERTK are a cause of retinitis pigmentosa (RP) [MIM:268000]. RP that leads to degeneration of retinal photoreceptor cells. Patients typically have night vision blindness and loss of midperipheral visual field. As their condition progresses, they lose their far peripheral visual field and eventually central vision as well.,Function:In case of filovirus infection, seems to function as a cell entry factor.,online information:Retina International's Scientific Newsletter,similarity:Belongs to the protein kinase superfamily. Tyr protein kinase family.,similarity:Belongs to the protein kinase superfamily. Tyr protein kinase family. AXL/UFO subfamily.,similarity:Contains 1 protein kinase domain.,similarity:Contains 2 fibronectin type-III domains.,similarity:Contains 2 Ig-like C2-type (immunoglobulin-like) domains.,tissue specificity:Not expressed in normal B- and T-lymphocytes but is expressed in numerous neoplastic B- and T-cell lines.,

## Validation Data



Western Blot analysis of 3T3 cells using Phospho-MerTK/Tyro3 (Y749/681) Polyclonal Antibody diluted at 1:500



Immunohistochemistry analysis of paraffin-embedded human brain, using MER/SKY (Phospho-Tyr749/681) Antibody. The picture on the right is blocked with the phospho peptide.

## Contact information

Orders: [order.cn@immunoway.com](mailto:order.cn@immunoway.com)  
 Support: [support.cn@immunoway.com](mailto:support.cn@immunoway.com)  
 Telephone: 400-8787-807(China)  
 Website: <http://www.immunoway.com.cn>  
 Address: 2200 Ringwood Ave San Jose, CA 95131 USA



Please scan the QR code to access additional product information:  
**MerTK/Tyro3**  
**(Phospho Tyr749/681) Rabbit pAb**

For Research Use Only. Not for Use in Diagnostic Procedures.

[Antibody](#) | [ELISA Kits](#) | [Protein](#) | [Reagents](#)