

## Vimentin (Phospho Ser83) Rabbit pAb

CatalogNo: YP0766 **Orthogonal Validated** 

### Key Features

#### Host Species

- Rabbit

#### Reactivity

- Human, Mouse, Rat

#### Applications

- WB, IHC, IF, ELISA

#### MW

- 54kD (Observed)

#### Isotype

- IgG

### Storage

**Storage\*** -15°C to -25°C/1 year (Do not lower than -25°C)

**Formulation** Liquid in PBS containing 50% glycerol, 0.5% BSA and 0.02% sodium azide.

### Recommended Dilution Ratios

**WB 1:500-1:2000**

**IHC 1:100-1:300**

**ELISA 1:10000**

**IF 1:50-200**

### Basic Information

**Clonality** Polyclonal

### Immunogen Information

**Immunogen** The antiserum was produced against synthesized peptide derived from human Vimentin around the phosphorylation site of Ser83. AA range:56-105

**Specificity** Phospho-Vimentin (S83) Polyclonal Antibody detects endogenous levels of Vimentin protein only when phosphorylated at S83. The name of modified sites may be influenced by many factors, such as species (the modified site was not originally found in human samples) and the change of protein sequence (the previous protein sequence is incomplete, and the protein sequence may be prolonged with the development of protein sequencing technology). When naming, we will use the "numbers" in historical reference to keep the sites consistent with the reports. The antibody binds to the following modification sequence (lowercase letters are modification sites): QDsVD

---

## | Target Information

**Gene name** VIM

**Protein Name** Vimentin

Organism	Gene ID	UniProt ID
Human	<a href="#">7431</a> ;	<a href="#">P08670</a> ;
Mouse	<a href="#">22352</a> ;	<a href="#">P20152</a> ;
Rat	<a href="#">81818</a> ;	<a href="#">P31000</a> ;

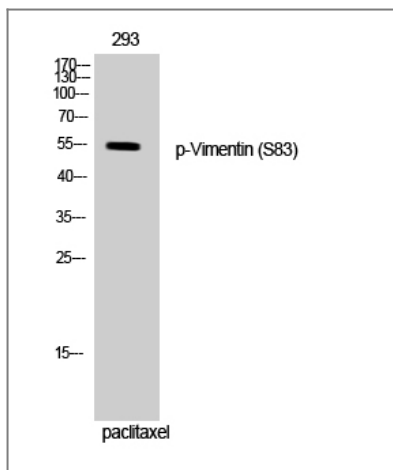
**Cellular Localization** Cytoplasm . Cytoplasm, cytoskeleton . Nucleus matrix . Cell membrane .

**Tissue specificity** Highly expressed in fibroblasts, some expression in T- and B-lymphocytes, and little or no expression in Burkitt's lymphoma cell lines. Expressed in many hormone-independent mammary carcinoma cell lines.

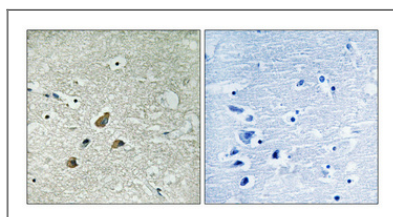
**Function** Function: Vimentins are class-III intermediate filaments found in various non-epithelial cells, especially mesenchymal cells., online information: Vimentin entry, PTM: One of the most prominent phosphoproteins in various cells of mesenchymal origin. Phosphorylation is enhanced during cell division, at which time vimentin filaments are significantly reorganized., sequence Caution: Intron retention., similarity: Belongs to the intermediate filament family., subunit: Homopolymer. Interacts with HCV core protein. Interacts with LGSN and SYNM., tissue specificity: Highly expressed in fibroblasts, some expression in T- and B-lymphocytes, and little or no expression in Burkitt's lymphoma cell lines. Expressed in many hormone-independent mammary carcinoma cell lines.,

---

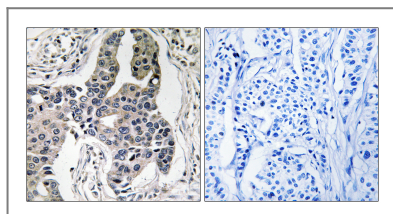
## | Validation Data



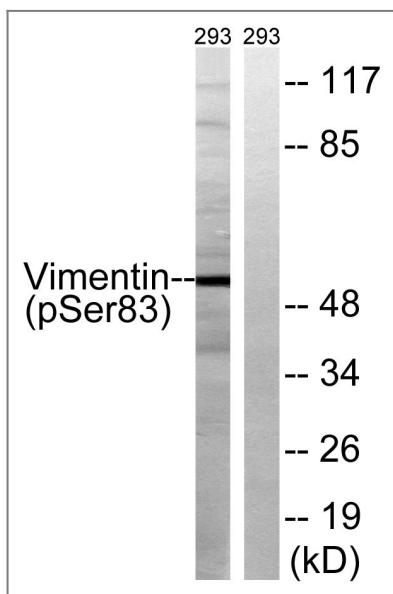
Western Blot analysis of 293 cells using Phospho-Vimentin (S83) Polyclonal Antibody



Immunohistochemical analysis of paraffin-embedded Human brain. Antibody was diluted at 1:100(4° overnight). High-pressure and temperature Tris-EDTA,pH8.0 was used for antigen retrieval. Negative contrl (right) obtained from antibody was pre-absorbed by immunogen peptide.



Immunohistochemistry analysis of paraffin-embedded human breast carcinoma, using Vimentin (Phospho-Ser83) Antibody. The picture on the right is blocked with the phospho peptide.



Western blot analysis of lysates from 293 cells treated with paclitaxel 1uM 24h, using Vimentin (Phospho-Ser83) Antibody. The lane on the right is blocked with the phospho peptide.

## Contact information

Orders: order.cn@immunoway.com  
 Support: support.cn@immunoway.com  
 Telephone: 400-8787-807(China)  
 Website: <http://www.immunoway.com.cn>  
 Address: 2200 Ringwood Ave San Jose, CA 95131 USA



Please scan the QR code to access additional product information:  
**Vimentin (Phospho Ser83) Rabbit pAb**

