

Rho GDI α (Phospho Ser174) Rabbit pAb

CatalogNo: YP0762 **Orthogonal Validated** 

Key Features

Host Species

- Rabbit

Reactivity

- Human, Mouse, Rat

Applications

- WB, IHC, IF, ELISA

MW

- 23kD (Observed)

Isotype

- IgG

Storage

Storage* -15°C to -25°C/1 year (Do not lower than -25°C)

Formulation Liquid in PBS containing 50% glycerol, 0.5% BSA and 0.02% sodium azide.

Recommended Dilution Ratios

WB 1:500-1:2000

IHC 1:100-1:300

ELISA 1:20000

IF 1:50-200

Basic Information

Clonality Polyclonal

Immunogen Information

Immunogen The antiserum was produced against synthesized peptide derived from human ARHGDI α around the phosphorylation site of Ser174. AA range:140-189

Specificity

Phospho-Rho GDI α (S174) Polyclonal Antibody detects endogenous levels of Rho GDI α protein only when phosphorylated at S174. The name of modified sites may be influenced by many factors, such as species (the modified site was not originally found in human samples) and the change of protein sequence (the previous protein sequence is incomplete, and the protein sequence may be prolonged with the development of protein sequencing technology). When naming, we will use the "numbers" in historical reference to keep the sites consistent with the reports. The antibody binds to the following modification sequence (lowercase letters are modification sites):RGsYS

Target Information

Gene name ARHGDI A

Protein Name Rho GDP-dissociation inhibitor 1

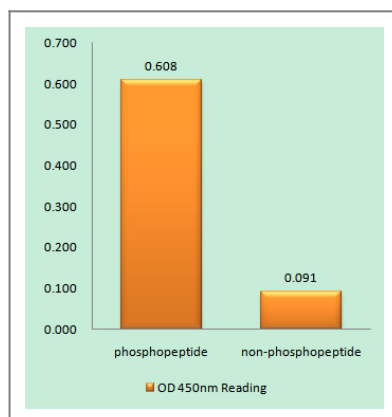
Organism	Gene ID	UniProt ID
Human	396 ;	P52565 ;
Mouse	192662 ;	Q99PT1 ;
Rat	360678 ;	Q5XI73 ;

Cellular Localization Cytoplasm .

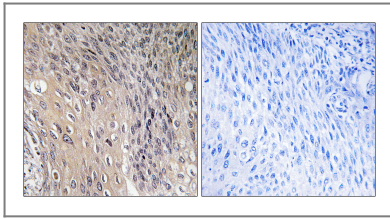
Tissue specificity Brain,Cajal-Retzius cell,Colon,Epithelium,Fetal brain cortex,Lung,M

Function Function:Regulates the GDP/GTP exchange reaction of the Rho proteins by inhibiting the dissociation of GDP from them, and the subsequent binding of GTP to them.,similarity:Belongs to the Rho GDI family.,subunit:Monomer.,

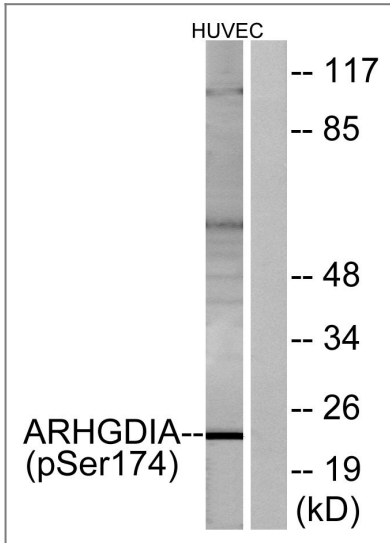
Validation Data



Enzyme-Linked Immunosorbent Assay (Phospho-ELISA) for Immunogen Phosphopeptide (Phospho-left) and Non-Phosphopeptide (Phospho-right), using ARHGDI A (Phospho-Ser174) Antibody



Immunohistochemistry analysis of paraffin-embedded human cervix carcinoma, using ARHGDI A (Phospho-Ser174) Antibody. The picture on the right is blocked with the phospho peptide.



Western blot analysis of lysates from HUVEC cells treated with EGF 200ng/ml 30', using ARHGDI A (Phospho-Ser174) Antibody. The lane on the right is blocked with the phospho peptide.

Contact information

Orders: order.cn@immunoway.com
Support: support.cn@immunoway.com
Telephone: 400-8787-807(China)
Website: <http://www.immunoway.com.cn>
Address: 2200 Ringwood Ave San Jose, CA 95131 USA



Please scan the QR code to access additional product information:
Rho GDI A (Phospho Ser174) Rabbit pAb

For Research Use Only. Not for Use in Diagnostic Procedures.

[Antibody](#) | [ELISA Kits](#) | [Protein](#) | [Reagents](#)