

Topoisomerase II α (Phospho Ser1106) Rabbit pAb

CatalogNo: YP0759 **Orthogonal Validated** 

Key Features

Host Species

- Rabbit

Reactivity

- Human, Mouse, Rat

Applications

- WB, IHC, IF, ELISA

MW

- 174kD (Observed)

Isotype

- IgG

Storage

Storage* -15°C to -25°C/1 year (Do not lower than -25°C)

Formulation Liquid in PBS containing 50% glycerol, 0.5% BSA and 0.02% sodium azide.

Recommended Dilution Ratios

WB 1:500-1:2000

IHC 1:100-1:300

ELISA 1:5000

IF 1:50-200

Basic Information

Clonality Polyclonal

Immunogen Information

Immunogen The antiserum was produced against synthesized peptide derived from human TOP2A around the phosphorylation site of Ser1106. AA range:1081-1130

Specificity

Phospho-Topo II α (S1106) Polyclonal Antibody detects endogenous levels of Topo II α protein only when phosphorylated at S1106. The name of modified sites may be influenced by many factors, such as species (the modified site was not originally found in human samples) and the change of protein sequence (the previous protein sequence is incomplete, and the protein sequence may be prolonged with the development of protein sequencing technology). When naming, we will use the "numbers" in historical reference to keep the sites consistent with the reports. The antibody binds to the following modification sequence (lowercase letters are modification sites):EEsDN

Target Information

Gene name TOP2A TOP2

Protein Name DNA topoisomerase 2-alpha

Organism	Gene ID	UniProt ID
Human	7153 ;	P11388 ;
Mouse	21973 ;	Q01320 ;
Rat	360243 ;	P41516 ;

Cellular Localization

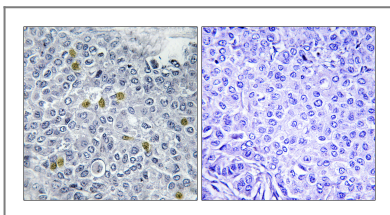
Cytoplasm . Nucleus, nucleoplasm . Nucleus . Nucleus, nucleolus .

Tissue specificity Expressed in the tonsil, spleen, lymph node, thymus, skin, pancreas, testis, colon, kidney, liver, brain and lung (PubMed:9155056). Also found in high-grade lymphomas, squamous cell lung tumors and seminomas (PubMed:9155056).

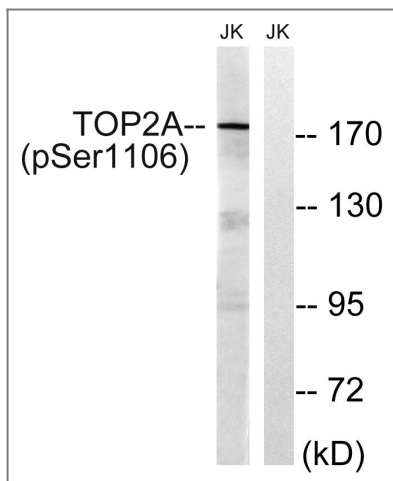
Function

Catalytic activity:ATP-dependent breakage, passage and rejoining of double-stranded DNA.,enzyme regulation:Specifically inhibited by the intercalating agent amsacrine.,Function:Control of topological states of DNA by transient breakage and subsequent rejoining of DNA strands. Topoisomerase II makes double-strand breaks.,miscellaneous:Eukaryotic topoisomerase I and II can relax both negative and positive supercoils, whereas prokaryotic enzymes relax only negative supercoils.,PTM:Phosphorylation has no effect on catalytic activity.,similarity:Belongs to the type II topoisomerase family.,subcellular location:Generally located in the nucleoplasm.,subunit:Homodimer. Interacts with COPS5.,

Validation Data



Immunohistochemistry analysis of paraffin-embedded human breast carcinoma, using TOP2A (Phospho-Ser1106) Antibody. The picture on the right is blocked with the phospho peptide.



Western blot analysis of lysates from Jurkat cells treated with paclitaxel 1uM 24h, using TOP2A (Phospho-Ser1106) Antibody. The lane on the right is blocked with the phospho peptide.

Contact information

Orders: order.cn@immunoway.com
Support: support.cn@immunoway.com
Telephone: 400-8787-807(China)
Website: <http://www.immunoway.com.cn>
Address: 2200 Ringwood Ave San Jose, CA 95131 USA



Please scan the QR code to access additional product information:
Topoisomerase II α (Phospho Ser1106) Rabbit pAb

For Research Use Only. Not for Use in Diagnostic Procedures.

[Antibody](#) | [ELISA Kits](#) | [Protein](#) | [Reagents](#)