

TPH1 (Phospho Ser58) Rabbit pAb

CatalogNo: YP0747 **Orthogonal Validated** 

Key Features

Host Species

- Rabbit

Reactivity

- Human, Mouse, Rat

Applications

- WB, IHC, IF, ELISA

MW

- 51kD (Observed)

Isotype

- IgG

Storage

Storage* -15°C to -25°C/1 year (Do not lower than -25°C)

Formulation Liquid in PBS containing 50% glycerol, 0.5% BSA and 0.02% sodium azide.

Recommended Dilution Ratios

WB 1:500-1:2000

IHC 1:100-1:300

ELISA 1:10000

IF 1:50-200

Basic Information

Clonality Polyclonal

Immunogen Information

Immunogen The antiserum was produced against synthesized peptide derived from human Tryptophan Hydroxylase around the phosphorylation site of Ser58. AA range:26-75

Specificity Phospho-TPH1 (S58) Polyclonal Antibody detects endogenous levels of TPH1 protein only when phosphorylated at S58. The name of modified sites may be influenced by many factors, such as species (the modified site was not originally found in human samples) and the change of protein sequence (the previous protein sequence is incomplete, and the protein sequence may be prolonged with the development of protein sequencing technology). When naming, we will use the "numbers" in historical reference to keep the sites consistent with the reports. The antibody binds to the following modification sequence (lowercase letters are modification sites):RNSEF

| Target Information

Gene name TPH1

Protein Name Tryptophan 5-hydroxylase 1

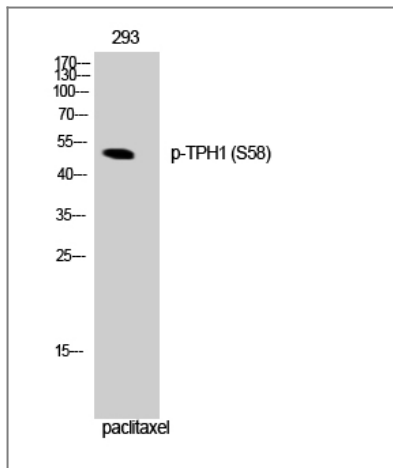
Organism	Gene ID	UniProt ID
Human	7166 ;	P17752 ;
Mouse	21990 ;	P17532 ;
Rat	24848 ;	P09810 ;

Cellular Localization cytosol,neuron projection,

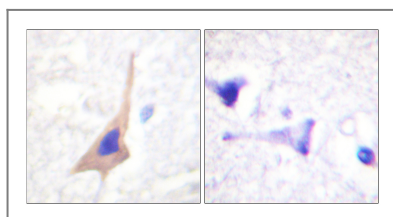
Tissue specificity [Isoform 2]: Seems to be less widely expressed than isoform 1.

Function Catalytic activity:L-tryptophan + tetrahydrobiopterin + O(2) = 5-hydroxy-L-tryptophan + 4a-hydroxytetrahydrobiopterin.,cofactor:Fe(2+) ion.,pathway:Aromatic compound metabolism; serotonin biosynthesis; serotonin from L-tryptophan: step 1/2.,similarity:Belongs to the biopterin-dependent aromatic amino acid hydroxylase family.,similarity:Contains 1 ACT domain.,subunit:Multimer of identical subunits.,tissue specificity:Isoform 2 seems to be less widely expressed than isoform 1.,

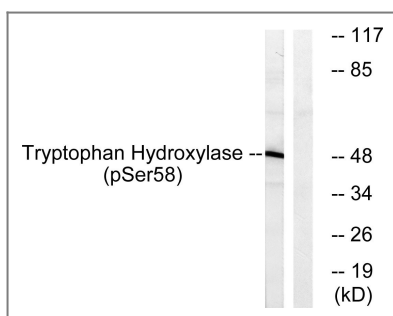
| Validation Data



Western Blot analysis of 293 cells using Phospho-TPH1 (S58) Polyclonal Antibody



Immunohistochemistry analysis of paraffin-embedded human brain, using Tryptophan Hydroxylase (Phospho-Ser58) Antibody. The picture on the right is blocked with the phospho peptide.



Western blot analysis of lysates from 293 cells treated with paclitaxel 1uM 24h, using Tryptophan Hydroxylase (Phospho-Ser58) Antibody. The lane on the right is blocked with the phospho peptide.

Contact information

Orders: order.cn@immunoway.com
 Support: support.cn@immunoway.com
 Telephone: 400-8787-807(China)
 Website: <http://www.immunoway.com.cn>
 Address: 2200 Ringwood Ave San Jose, CA 95131 USA



Please scan the QR code to access additional product information:
TPH1 (Phospho Ser58) Rabbit pAb

For Research Use Only. Not for Use in Diagnostic Procedures.

[Antibody](#) | [ELISA Kits](#) | [Protein](#) | [Reagents](#)