

## Smad3 (Phospho Ser208) Rabbit pAb

CatalogNo: YP0746 **Orthogonal Validated** 

### Key Features

#### Host Species

- Rabbit

#### Reactivity

- Human, Mouse, Rat

#### Applications

- WB, IHC, IF, ELISA

#### MW

- 40kD (Observed)

#### Isotype

- IgG

### Storage

**Storage\*** -15°C to -25°C/1 year (Do not lower than -25°C)

**Formulation** Liquid in PBS containing 50% glycerol, 0.5% BSA and 0.02% sodium azide.

### Recommended Dilution Ratios

**WB 1:500-1:2000**

**IHC 1:100-1:300**

**ELISA 1:10000**

**IF 1:50-200**

### Basic Information

**Clonality** Polyclonal

### Immunogen Information

**Immunogen** The antiserum was produced against synthesized peptide derived from human Smad3 around the phosphorylation site of Ser208. AA range: 174-223

**Specificity**

Phospho-Smad3 (S208) Polyclonal Antibody detects endogenous levels of Smad3 protein only when phosphorylated at S208. The name of modified sites may be influenced by many factors, such as species (the modified site was not originally found in human samples) and the change of protein sequence (the previous protein sequence is incomplete, and the protein sequence may be prolonged with the development of protein sequencing technology). When naming, we will use the "numbers" in historical reference to keep the sites consistent with the reports. The antibody binds to the following modification sequence (lowercase letters are modification sites):NLSPN

**| Target Information**

**Gene name** SMAD3 MADH3

**Protein Name** Mothers against decapentaplegic homolog 3

Organism	Gene ID	UniProt ID
Human	<a href="#">4088</a> ;	<a href="#">P84022</a> ;
Mouse	<a href="#">17127</a> ;	<a href="#">Q8BUN5</a> ;
Rat	<a href="#">25631</a> ;	<a href="#">P84025</a> ;

**Cellular Localization**

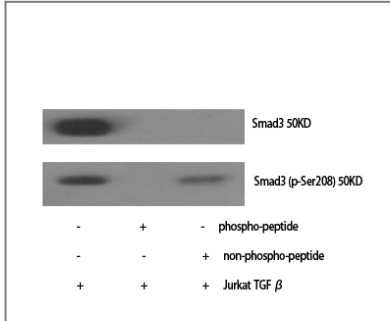
Cytoplasm . Nucleus . Cytoplasmic and nuclear in the absence of TGF-beta. On TGF-beta stimulation, migrates to the nucleus when complexed with SMAD4 (PubMed:15799969, PubMed:21145499). Through the action of the phosphatase PPM1A, released from the SMAD2/SMAD4 complex, and exported out of the nucleus by interaction with RANBP1 (PubMed:16751101, PubMed:19289081). Co-localizes with LEMD3 at the nucleus inner membrane (PubMed:15601644). MAPK-mediated phosphorylation appears to have no effect on nuclear import (PubMed:19218245). PDPK1 prevents its nuclear translocation in response to TGF-beta (PubMed:17327236). Localized mainly to the nucleus in the early stages of embryo development with expression becoming evident in the cytoplasm of the inner cell mass at the blastocyst stage (By similarity). .

**Tissue specificity** Brain, Colon carcinoma, Esophagus tumor, Pancreas, Placenta, Spleen, Umbilical cord blood

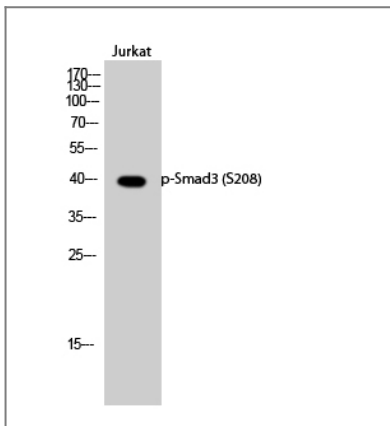
**Function**

Disease: Defects in SMAD3 may be a cause of colorectal cancer (CRC) [MIM:114500]., Domain: The MH2 domain is sufficient to carry protein nuclear export., Function: Transcriptional modulator activated by TGF-beta (transforming growth factor) and activin type 1 receptor kinase. SMAD3 is a receptor-regulated SMAD (R-SMAD)., PTM: Phosphorylated on serine by TGF-beta and activin type 1 receptor kinases., similarity: Belongs to the dwarfin/SMAD family., similarity: Contains 1 MH1 (MAD homology 1) domain., similarity: Contains 1 MH2 (MAD homology 2) domain., subcellular location: In the cytoplasm in the absence of ligand. Migration to the nucleus when complexed with Smad4., subunit: Interacts with HGS. Interacts with NEDD4L in response to TGF-beta. Interacts with TTRAP (By similarity). Interacts with SARA (SMAD anchor for receptor activation); form trimers with another SMAD3 and the co-SMAD SMAD4. Interacts with JUN/FOS, vitamin D receptor, homeobox protein TGIF and TGIF2, PEBP2-alpha C subunit, CREB-binding protein (CBP), p300, SKI, SNON, ATF2, SMURF2, AIP1, DACH1 and TGFB1I1. Part of a complex consisting of AIP1, ACVR2A, ACVR1B and SMAD3. Found in a complex with SMAD2 and TRIM33 upon addition of TGF-beta. Interacts with SMAD2 and TRIM33. Found in a complex with SMAD3, Ran and XPO4. Interacts with XPO4. Interacts with LBXCOR1 and CORL2.,

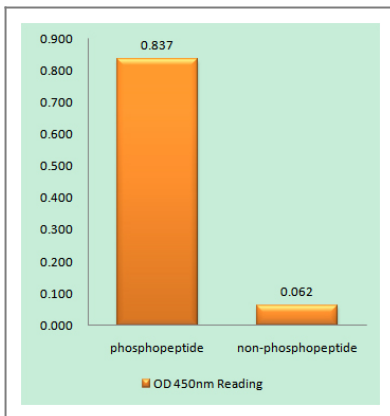
## Validation Data



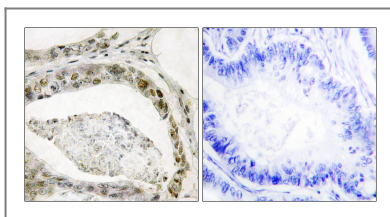
Western Blot analysis of various cells using Phospho-Smad3 (S208) Polyclonal Antibody



Western Blot analysis of Jurkat cells using Phospho-Smad3 (S208) Polyclonal Antibody



Enzyme-Linked Immunosorbent Assay (Phospho-ELISA) for Immunogen Phosphopeptide (Phospho-left) and Non-Phosphopeptide (Phospho-right), using Smad3 (Phospho-Ser208) Antibody



Immunohistochemistry analysis of paraffin-embedded human colon carcinoma, using Smad3 (Phospho-Ser208) Antibody. The picture on the right is blocked with the phospho peptide.

## Contact information

Orders: order.cn@immunoway.com  
Support: support.cn@immunoway.com  
Telephone: 400-8787-807(China)  
Website: <http://www.immunoway.com.cn>  
Address: 2200 Ringwood Ave San Jose, CA 95131 USA



Please scan the QR code  
to access additional  
product information:  
**Smad3 (Phospho  
Ser208) Rabbit pAb**

---

For Research Use Only. Not for Use in Diagnostic Procedures.

[Antibody](#) | [ELISA Kits](#) | [Protein](#) | [Reagents](#)