

## Smad1 (Phospho Ser187) Rabbit pAb

CatalogNo: YP0744

### Key Features

#### Host Species

- Rabbit

#### Reactivity

- Human, Mouse, Monkey

#### Applications

- WB, IHC, IF, ELISA

#### MW

- 60kD (Observed)

#### Isotype

- IgG

### Storage

**Storage\*** -15°C to -25°C/1 year (Do not lower than -25°C)

**Formulation** Liquid in PBS containing 50% glycerol, 0.5% BSA and 0.02% sodium azide.

### Recommended Dilution Ratios

**WB 1:500-1:2000**

**IHC 1:100-1:300**

**ELISA 1:10000**

**IF 1:50-200**

### Basic Information

**Clonality** Polyclonal

### Immunogen Information

**Immunogen** The antiserum was produced against synthesized peptide derived from human Smad1 around the phosphorylation site of Ser187. AA range:153-202

**Specificity** Phospho-Smad1 (S187) Polyclonal Antibody detects endogenous levels of Smad1 protein only when phosphorylated at S187. The name of modified sites may be influenced by many factors, such as species (the modified site was not originally found in human samples) and the change of protein sequence (the previous protein sequence is incomplete, and the protein sequence may be prolonged with the development of protein sequencing technology). When naming, we will use the "numbers" in historical reference to keep the sites consistent with the reports. The antibody binds to the following modification sequence (lowercase letters are modification sites):PHsPN

---

## | Target Information

**Gene name** SMAD1

**Protein Name** Mothers against decapentaplegic homolog 1

Organism	Gene ID	UniProt ID
Human	<a href="#">4086</a> ;	<a href="#">Q15797</a> ;
Mouse	<a href="#">17125</a> ;	<a href="#">P70340</a> ;

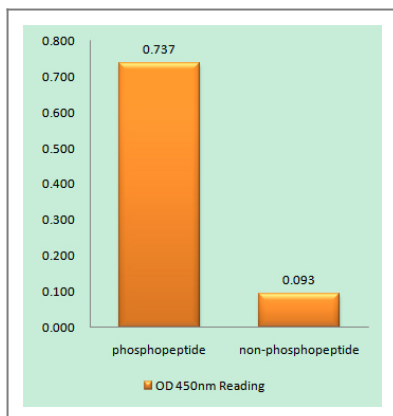
**Cellular Localization** Cytoplasm . Nucleus . Cytoplasmic in the absence of ligand. Migrates to the nucleus when complexed with SMAD4 (PubMed:15647271). Co-localizes with LEMD3 at the nucleus inner membrane (PubMed:15647271). Exported from the nucleus to the cytoplasm when dephosphorylated (By similarity). .

**Tissue specificity** Ubiquitous. Highest expression seen in the heart and skeletal muscle.

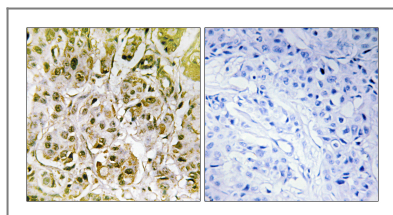
**Function** Function:Transcriptional modulator activated by BMP (bone morphogenetic proteins) type 1 receptor kinase. SMAD1 is a receptor-regulated SMAD (R-SMAD).,PTM:Phosphorylated on serine by BMP type 1 receptor kinase.,PTM:Ubiquitin-mediated proteolysis by SMAD-specific E3 ubiquitin ligase SMURF1.,similarity:Belongs to the dwarfin/SMAD family.,similarity:Contains 1 MH1 (MAD homology 1) domain.,similarity:Contains 1 MH2 (MAD homology 2) domain.,subcellular location:Cytoplasmic in the absence of ligand. Migrates to the nucleus when complexed with SMAD4.,subunit:Interacts with HGS, NANOG and ZCCHC12 (By similarity). May form trimers with another SMAD1 and the co-SMAD SMAD4. Interacts with PEBP2-alpha subunit, CREB-binding protein (CBP), p300, SMURF1, SMURF2 and HOXC8. Associates with ZNF423 or ZNF521 in response to BMP2 leading to activate transcription of BMP target genes. Interacts with LBXCOR1.,tissue specificity:Ubiquitous. Highest expression seen in the heart and skeletal muscle.,

---

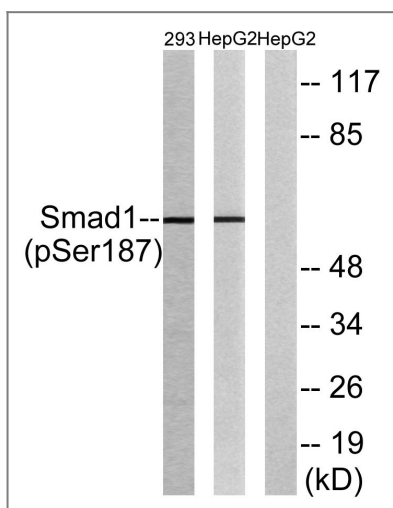
## | Validation Data



Enzyme-Linked Immunosorbent Assay (Phospho-ELISA) for Immunogen Phosphopeptide (Phospho-left) and Non-Phosphopeptide (Phospho-right), using Smad1 (Phospho-Ser187) Antibody



Immunohistochemistry analysis of paraffin-embedded human breast carcinoma, using Smad1 (Phospho-Ser187) Antibody. The picture on the right is blocked with the phospho peptide.



Western blot analysis of lysates from 293 cells and HepG2 cells, using Smad1 (Phospho-Ser187) Antibody. The lane on the right is blocked with the phospho peptide.

## Contact information

Orders: [order.cn@immunoway.com](mailto:order.cn@immunoway.com)  
 Support: [support.cn@immunoway.com](mailto:support.cn@immunoway.com)  
 Telephone: 400-8787-807(China)  
 Website: <http://www.immunoway.com.cn>  
 Address: 2200 Ringwood Ave San Jose, CA 95131 USA



Please scan the QR code to access additional product information:  
**Smad1 (Phospho Ser187) Rabbit pAb**