

## c-Fms (Phospho Tyr561) Rabbit pAb

CatalogNo: YP0734

### Key Features

#### Host Species

- Rabbit

#### Reactivity

- Human, Mouse, Rat

#### Applications

- WB, IHC, IF, ELISA

#### MW

- 130-170kD (Observed)

#### Isotype

- IgG

### Storage

**Storage\*** -15°C to -25°C/1 year (Do not lower than -25°C)

**Formulation** Liquid in PBS containing 50% glycerol, 0.5% BSA and 0.02% sodium azide.

### Recommended Dilution Ratios

**WB 1:500-1:2000**

**IHC 1:100-1:300**

**ELISA 1:10000**

**IF 1:50-200**

### Basic Information

**Clonality** Polyclonal

### Immunogen Information

**Immunogen** The antiserum was produced against synthesized peptide derived from human CSFR around the phosphorylation site of Tyr561. AA range:531-580

## Specificity

Phospho-c-Fms (Y561) Polyclonal Antibody detects endogenous levels of c-Fms protein only when phosphorylated at Y561. The name of modified sites may be influenced by many factors, such as species (the modified site was not originally found in human samples) and the change of protein sequence (the previous protein sequence is incomplete, and the protein sequence may be prolonged with the development of protein sequencing technology). When naming, we will use the "numbers" in historical reference to keep the sites consistent with the reports. The antibody binds to the following modification sequence (lowercase letters are modification sites): NSyTF

---

## | Target Information

**Gene name** CSF1R

**Protein Name** Macrophage colony-stimulating factor 1 receptor

Organism	Gene ID	UniProt ID
Human	<a href="#">1436</a> ;	<a href="#">P07333</a> ;
Mouse	<a href="#">12978</a> ;	<a href="#">P09581</a> ;
Rat		<a href="#">Q00495</a> ;

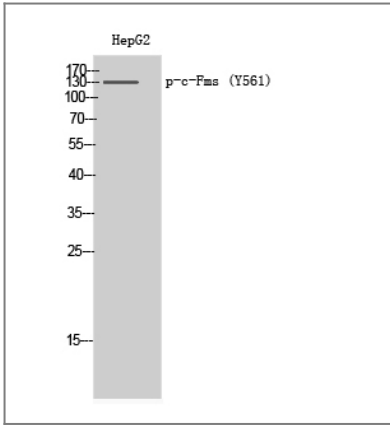
**Cellular Localization** Cell membrane; Single-pass type I membrane protein.

**Tissue specificity** Expressed in bone marrow and in differentiated blood mononuclear cells.

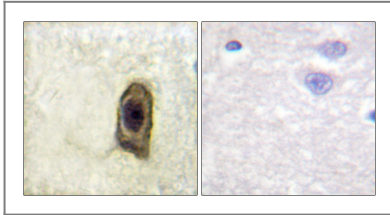
**Function** Catalytic activity: ATP + a [protein]-L-tyrosine = ADP + a [protein]-L-tyrosine phosphate. ,Function: Protein tyrosine-kinase transmembrane receptor for CSF1 and IL34. ,similarity: Belongs to the protein kinase superfamily. Tyr protein kinase family. ,similarity: Belongs to the protein kinase superfamily. Tyr protein kinase family. CSF-1/PDGF receptor subfamily. ,similarity: Contains 1 protein kinase domain. ,similarity: Contains 5 Ig-like C2-type (immunoglobulin-like) domains. ,subunit: Interacts with INPPL1/SHIP2 and THOC5. ,tissue specificity: Expressed in bone marrow and in differentiated blood mononuclear cells. ,

---

## | Validation Data



Western Blot analysis of HepG2 cells using Phospho-c-Fms (Y561) Polyclonal Antibody



Immunohistochemistry analysis of paraffin-embedded human brain, using CSFR (Phospho-Tyr561) Antibody. The picture on the right is blocked with the phospho peptide.

## Contact information

Orders: [order.cn@immunoway.com](mailto:order.cn@immunoway.com)  
 Support: [support.cn@immunoway.com](mailto:support.cn@immunoway.com)  
 Telephone: 400-8787-807(China)  
 Website: <http://www.immunoway.com.cn>  
 Address: 2200 Ringwood Ave San Jose, CA 95131 USA



Please scan the QR code to access additional product information:  
**c-Fms (Phospho Tyr561) Rabbit pAb**

For Research Use Only. Not for Use in Diagnostic Procedures.

[Antibody](#) | [ELISA Kits](#) | [Protein](#) | [Reagents](#)