

## Casein Kinase II $\beta$ (Phospho Ser209) Rabbit pAb

CatalogNo: YP0732

### Key Features

#### Host Species

- Rabbit

#### Reactivity

- Human, Mouse, Rat

#### Applications

- WB, IHC, IF, ELISA

#### MW

- 25kD (Observed)

#### Isotype

- IgG

### Recommended Dilution Ratios

**WB 1:500-1:2000**

**IHC 1:100-1:300**

**ELISA 1:40000**

**IF 1:50-200**

### Storage

#### Storage\*

-15°C to -25°C/1 year (Do not lower than -25°C)

#### Formulation

Liquid in PBS containing 50% glycerol, 0.5% BSA and 0.02% sodium azide.

### Basic Information

#### Clonality

Polyclonal

### Immunogen Information

#### Immunogen

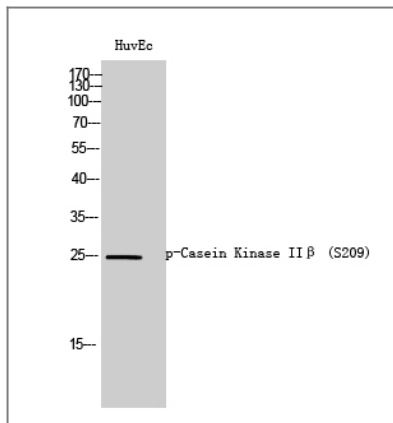
The antiserum was produced against synthesized peptide derived from human CKII-beta around the phosphorylation site of Ser209. AA range: 166-215

**Specificity** Phospho-Casein Kinase IIβ (S209) Polyclonal Antibody detects endogenous levels of Casein Kinase IIβ protein only when phosphorylated at S209. The name of modified sites may be influenced by many factors, such as species (the modified site was not originally found in human samples) and the change of protein sequence (the previous protein sequence is incomplete, and the protein sequence may be prolonged with the development of protein sequencing technology). When naming, we will use the "numbers" in historical reference to keep the sites consistent with the reports. The antibody binds to the following modification sequence (lowercase letters are modification sites):FKSPV

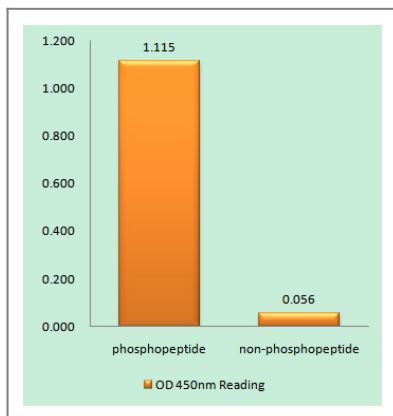
| Target Information

Gene name	CSNK2B		
Protein Name	Casein kinase II subunit beta		
	Organism	Gene ID	UniProt ID
	Human	<a href="#">1460</a> ;	<a href="#">P67870</a> ;
	Mouse	<a href="#">13001</a> ;	<a href="#">P67871</a> ;
	Rat	<a href="#">81650</a> ;	<a href="#">P67874</a> ;
Cellular Localization	nucleus,nucleoplasm,cytoplasm,cytosol,plasma membrane,protein kinase CK2 complex,PcG protein complex,extracellular exosome,		
Tissue specificity	Brain,Epithelium,		
Function	Function:Participates in Wnt signaling (By similarity). Plays a complex role in regulating the basal catalytic activity of the alpha subunit.,PTM:N-glycosylated.,PTM:Phosphorylated by alpha subunit.,similarity:Belongs to the casein kinase 2 subunit beta family.,similarity:Contains 1 UPAR/Ly6 domain.,subunit:Forms oligomer.,subunit:Tetramer composed of an alpha subunit, an alpha' subunit and two beta subunits. Interacts with TCTEX1D3 (By similarity). Interacts with CD163. Also component of a CK2-SPT16-SSRP1 complex composed of SSRP1, SUPT16H, CSNK2A1, CSNK2A2 and CSNK2B, the complex associating following UV irradiation.,		

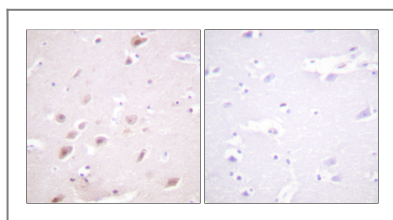
| Validation Data



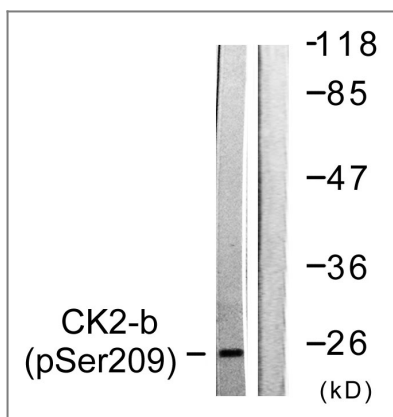
Western Blot analysis of HuvEc cells using Phospho-Casein Kinase II $\beta$  (S209) Polyclonal Antibody



Enzyme-Linked Immunosorbent Assay (Phospho-ELISA) for Immunogen Phosphopeptide (Phospho-left) and Non-Phosphopeptide (Phospho-right), using CKII-beta (Phospho-Ser209) Antibody



Immunohistochemistry analysis of paraffin-embedded human brain, using CKII-beta (Phospho-Ser209) Antibody. The picture on the right is blocked with the phospho peptide.



Western blot analysis of lysates from HUVEC cells, using CKII-beta (Phospho-Ser209) Antibody. The lane on the right is blocked with the phospho peptide.

## Contact information

Orders: order.cn@immunoway.com  
 Support: support.cn@immunoway.com  
 Telephone: 400-8787-807(China)  
 Website: <http://www.immunoway.com.cn>  
 Address: 2200 Ringwood Ave San Jose, CA 95131 USA



Please scan the QR code  
 to access additional  
 product information:  
**Casein Kinase II $\beta$**   
**(Phospho Ser209)**  
**Rabbit pAb**

