

Caspase-9 (Phospho Ser144) Rabbit pAb

CatalogNo: YP0726

Key Features

Host Species

- Rabbit

Reactivity

- Human, Mouse, Rat

Applications

- WB, IHC, IF, ELISA

MW

- 35kD (Observed)

Isotype

- IgG

Storage

Storage* -15°C to -25°C/1 year (Do not lower than -25°C)

Formulation Liquid in PBS containing 50% glycerol, 0.5% BSA and 0.02% sodium azide.

Recommended Dilution Ratios

WB 1:500-1:2000

IHC 1:100-1:300

ELISA 1:20000

IF 1:50-200

Basic Information

Clonality Polyclonal

Immunogen Information

Immunogen The antiserum was produced against synthesized peptide derived from human Caspase 9 around the phosphorylation site of Ser144. AA range:110-159

Specificity

Phospho-Caspase-9 (S144) Polyclonal Antibody detects endogenous levels of Caspase-9 protein only when phosphorylated at S144. The name of modified sites may be influenced by many factors, such as species (the modified site was not originally found in human samples) and the change of protein sequence (the previous protein sequence is incomplete, and the protein sequence may be prolonged with the development of protein sequencing technology). When naming, we will use the "numbers" in historical reference to keep the sites consistent with the reports. The antibody binds to the following modification sequence (lowercase letters are modification sites):LEsLR

Target Information

Gene name CASP9

Protein Name Caspase9

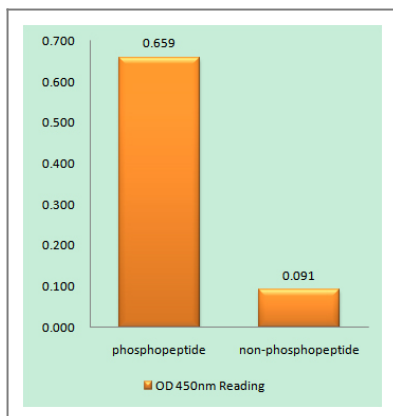
Organism	Gene ID	UniProt ID
Human	842 ;	P55211 ;
Rat	58918 ;	Q9JHK1 ;

Cellular Localization nucleus ,mitochondrion ,cytosol ,apoptosome ,

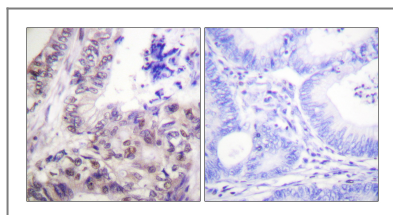
Tissue specificity Ubiquitous , with highest expression in the heart , moderate expression in liver , skeletal muscle , and pancreas. Low levels in all other tissues. Within the heart , specifically expressed in myocytes.

Function Catalytic activity:Strict requirement for an Asp residue at position P1 and with a marked preference for His at position P2. It has a preferred cleavage sequence of Leu-Gly-His-Asp-|-Xaa. ,Function:Involved in the activation cascade of caspases responsible for apoptosis execution. Binding of caspase-9 to Apaf-1 leads to activation of the protease which then cleaves and activates caspase-3. Proteolytically cleaves poly (ADP-ribose) polymerase (PARP) . ,Function:Isoform 2 lacks activity is an dominant-negative inhibitor of caspase-9. ,online information:Caspase-9 entry ,PTM:Cleavages at Asp-315 by granzyme B and at Asp-330 by caspase-3 generate the two active subunits. Caspase-8 and -10 can also be involved in these processing events. ,similarity:Belongs to the peptidase C14A family. ,similarity:Contains 1 CARD domain. ,subunit:Heterotetramer that consists of two anti-parallel arranged heterodimers , each one formed by a 35 kDa (p35) and a 10 kDa (p10) subunit. Caspase-9 and APAF1 bind to each other via their respective NH2-terminal CED-3 homologous domains in the presence of cytochrome C and ATP. Interacts with the inhibitors BIRC2 , BIRC4 , BIRC5 and BIRC7. ,tissue specificity:Ubiquitous , with highest expression in the heart , moderate expression in liver , skeletal muscle , and pancreas. Low levels in all other tissues. ,

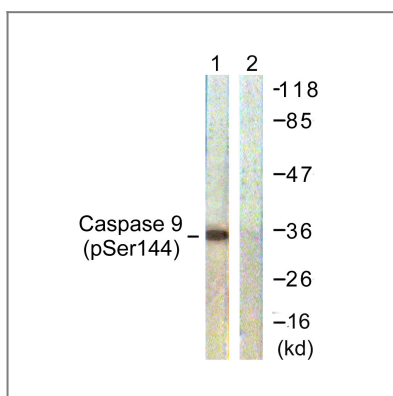
Validation Data



Enzyme-Linked Immunosorbent Assay (Phospho-ELISA) for Immunogen Phosphopeptide (Phospho-left) and Non-Phosphopeptide (Phospho-right), using Caspase 9 (Phospho-Ser144) Antibody



Immunohistochemistry analysis of paraffin-embedded human colon carcinoma, using Caspase 9 (Phospho-Ser144) Antibody. The picture on the right is blocked with the phospho peptide.



Western blot analysis of lysates from K562 cells, using Caspase 9 (Phospho-Ser144) Antibody. The lane on the right is blocked with the phospho peptide.

Contact information

Orders: order.cn@immunoway.com
 Support: support.cn@immunoway.com
 Telephone: 400-8787-807(China)
 Website: <http://www.immunoway.com.cn>
 Address: 2200 Ringwood Ave San Jose, CA 95131 USA



Please scan the QR code to access additional product information:
Caspase-9 (Phospho Ser144) Rabbit pAb

For Research Use Only. Not for Use in Diagnostic Procedures.

[Antibody](#) | [ELISA Kits](#) | [Protein](#) | [Reagents](#)