

## PTP1B (Phospho Ser50) Rabbit pAb

CatalogNo: YP0722 **Orthogonal Validated** 

### Key Features

#### Host Species

- Rabbit

#### Reactivity

- Human, Mouse, Rat, Monkey

#### Applications

- WB, IHC, IF, ELISA

#### MW

- 49kD (Observed)

#### Isotype

- IgG

### Storage

**Storage\*** -15°C to -25°C/1 year (Do not lower than -25°C)

**Formulation** Liquid in PBS containing 50% glycerol, 0.5% BSA and 0.02% sodium azide.

### Recommended Dilution Ratios

**WB 1:500-1:2000**

**IHC 1:100-1:300**

**ELISA 1:40000**

**IF 1:50-200**

### Basic Information

**Clonality** Polyclonal

### Immunogen Information

**Immunogen** The antiserum was produced against synthesized peptide derived from human PTP1B around the phosphorylation site of Ser50. AA range:16-65

**Specificity**

Phospho-PTP1B (S50) Polyclonal Antibody detects endogenous levels of PTP1B protein only when phosphorylated at S50. The name of modified sites may be influenced by many factors, such as species (the modified site was not originally found in human samples) and the change of protein sequence (the previous protein sequence is incomplete, and the protein sequence may be prolonged with the development of protein sequencing technology). When naming, we will use the "numbers" in historical reference to keep the sites consistent with the reports. The antibody binds to the following modification sequence (lowercase letters are modification sites): DVSPF

---

## | Target Information

**Gene name** PTPN1

**Protein Name** Tyrosine-protein phosphatase non-receptor type 1

Organism	Gene ID	UniProt ID
Human	<a href="#">5770</a> ;	<a href="#">P18031</a> ;
Mouse	<a href="#">19246</a> ;	<a href="#">P35821</a> ;
Rat	<a href="#">24697</a> ;	<a href="#">P20417</a> ;

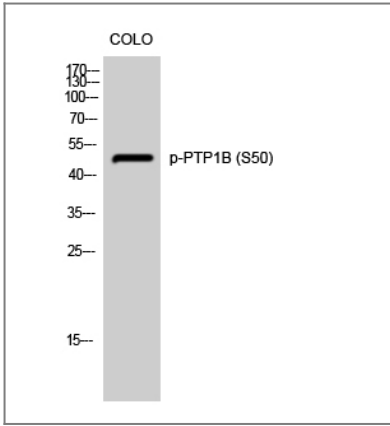
**Cellular Localization** Endoplasmic reticulum membrane ; Peripheral membrane protein ; Cytoplasmic side . Interacts with EPHA3 at the cell membrane.

**Tissue specificity** Expressed in keratinocytes (at protein level).

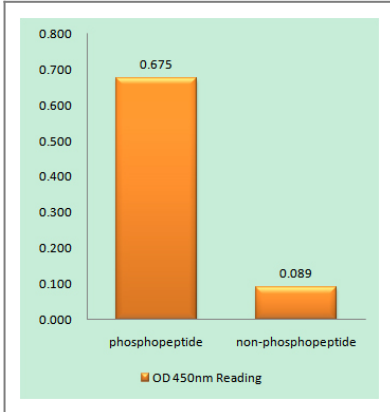
**Function** Catalytic activity: Protein tyrosine phosphate + H(2)O = protein tyrosine + phosphate., Function: May play an important role in CKII- and p60c-src-induced signal transduction cascades., PTM: Oxidized on Cys-215; the Cys-SOH formed in response to redox signaling reacts with the alpha-amido of the following residue to form a 4-amino-3-isothiazolidinone serine cross-link, triggering a conformational change that inhibits substrate binding and activity. The active site can be restored by reduction., similarity: Belongs to the protein-tyrosine phosphatase family. Non-receptor class 1 subfamily., similarity: Contains 1 tyrosine-protein phosphatase domain.,

---

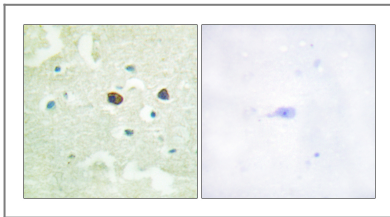
## | Validation Data



Western Blot analysis of COLO cells using Phospho-PTP1B (S50) Polyclonal Antibody diluted at 1:500



Enzyme-Linked Immunosorbent Assay (Phospho-ELISA) for Immunogen Phosphopeptide (Phospho-left) and Non-Phosphopeptide (Phospho-right), using PTP1B (Phospho-Ser50) Antibody



Immunohistochemistry analysis of paraffin-embedded human brain, using PTP1B (Phospho-Ser50) Antibody. The picture on the right is blocked with the phospho peptide.

## Contact information

Orders: order.cn@immunoway.com  
 Support: support.cn@immunoway.com  
 Telephone: 400-8787-807(China)  
 Website: <http://www.immunoway.com.cn>  
 Address: 2200 Ringwood Ave San Jose, CA 95131 USA



Please scan the QR code to access additional product information:  
**PTP1B (Phospho Ser50) Rabbit pAb**