

PFK-2 car (Phospho Ser483) Rabbit pAb

CatalogNo: YP0711

Orthogonal Validated 

Key Features

Host Species

- Rabbit

Reactivity

- Human, Mouse, Rat

Applications

- WB, IHC, IF, ELISA

MW

- 58kD (Observed)

Isotype

- IgG

Recommended Dilution Ratios

WB 1:500-1:2000

IHC 1:100-1:300

ELISA 1:40000

IF 1:50-200

Storage

Storage* -15°C to -25°C/1 year (Do not lower than -25°C)**Formulation** Liquid in PBS containing 50% glycerol, 0.5% BSA and 0.02% sodium azide.

Basic Information

Clonality Polyclonal

Immunogen Information

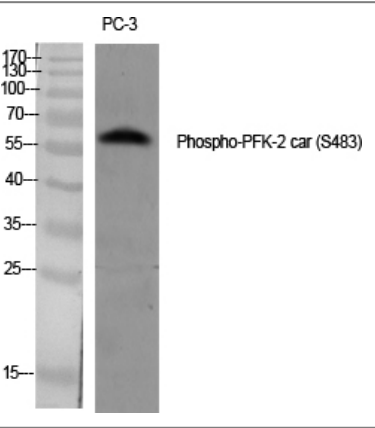
Immunogen The antiserum was produced against synthesized peptide derived from human PFKFB2 around the phosphorylation site of Ser483. AA range: 451-500

Specificity Phospho-PFK-2 car (S483) Polyclonal Antibody detects endogenous levels of PFK-2 car protein only when phosphorylated at S483. The name of modified sites may be influenced by many factors, such as species (the modified site was not originally found in human samples) and the change of protein sequence (the previous protein sequence is incomplete, and the protein sequence may be prolonged with the development of protein sequencing technology). When naming, we will use the "numbers" in historical reference to keep the sites consistent with the reports. The antibody binds to the following modification sequence (lowercase letters are modification sites):NYsVG

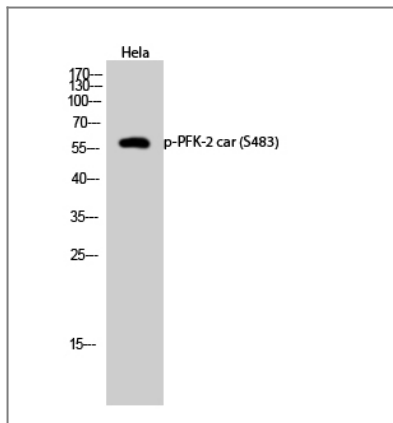
Target Information

Gene name	PFKFB2		
Protein Name	6-phosphofructo-2-kinase/fructose-2,6-bisphosphatase 2		
	Organism	Gene ID	UniProt ID
	Human	5208 ;	O60825 ;
	Mouse	18640 ;	P70265 ;
	Rat	24640 ;	Q9JJH5 ;
Cellular Localization	cytosol,		
Tissue specificity	Heart.		
Function	Catalytic activity:ATP + D-fructose 6-phosphate = ADP + beta-D-fructose 2,6-bisphosphate.,Catalytic activity:Beta-D-fructose 2,6-bisphosphate + H(2)O = D-fructose 6-phosphate + phosphate.,enzyme regulation:Phosphorylation results in the activation of the kinase activity.,Function:Synthesis and degradation of fructose 2,6-bisphosphate.,similarity:In the C-terminal section; belongs to the phosphoglycerate mutase family.,subunit:Homodimer.,tissue specificity:Heart.,		

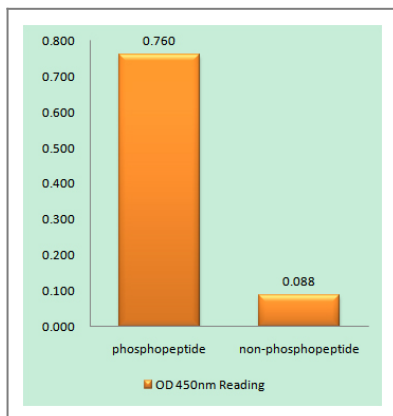
Validation Data



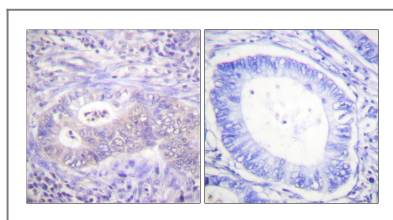
Western Blot analysis of various cells using Phospho-PFK-2 car (S483) Polyclonal Antibody diluted at 1:1000



Western Blot analysis of HeLa cells using Phospho-PFK-2 car (S483) Polyclonal Antibody diluted at 1:1000



Enzyme-Linked Immunosorbent Assay (Phospho-ELISA) for Immunogen Phosphopeptide (Phospho-left) and Non-Phosphopeptide (Phospho-right), using PFKFB2 (Phospho-Ser483) Antibody



Immunohistochemistry analysis of paraffin-embedded human colon carcinoma, using PFKFB2 (Phospho-Ser483) Antibody. The picture on the right is blocked with the phospho peptide.

Contact information

Orders: order.cn@immunoway.com
 Support: support.cn@immunoway.com
 Telephone: 400-8787-807(China)
 Website: <http://www.immunoway.com.cn>
 Address: 2200 Ringwood Ave San Jose, CA 95131 USA



Please scan the QR code
 to access additional
 product information:
**PFK-2 car (Phospho
 Ser483) Rabbit pAb**

For Research Use Only. Not for Use in Diagnostic Procedures.

[Antibody](#) | [ELISA Kits](#) | [Protein](#) | [Reagents](#)