

PKC δ (Phospho Tyr313) Rabbit pAb

CatalogNo: YP0704

Key Features

Host Species

- Rabbit

Reactivity

- Human, Mouse, Rat

Applications

- WB, IHC, IF, ELISA

MW

- 78kD (Observed)

Isotype

- IgG

Storage

Storage* -15°C to -25°C/1 year (Do not lower than -25°C)

Formulation Liquid in PBS containing 50% glycerol, 0.5% BSA and 0.02% sodium azide.

Recommended Dilution Ratios

WB 1:500-1:2000

IHC 1:100-1:300

IF 1:200-1:1000

ELISA 1:10000

Not yet tested in other applications.

Basic Information

Clonality Polyclonal

Immunogen Information

Immunogen The antiserum was produced against synthesized peptide derived from human PKC delta around the phosphorylation site of Tyr313. AA range:279-328

Specificity

Phospho-PKC δ (Y313) Polyclonal Antibody detects endogenous levels of PKC δ protein only when phosphorylated at Y313. The name of modified sites may be influenced by many factors, such as species (the modified site was not originally found in human samples) and the change of protein sequence (the previous protein sequence is incomplete, and the protein sequence may be prolonged with the development of protein sequencing technology). When naming, we will use the "numbers" in historical reference to keep the sites consistent with the reports. The antibody binds to the following modification sequence (lowercase letters are modification sites): GlyQG

Target Information

Gene name PRKCD

Protein Name Protein kinase C delta type

Organism	Gene ID	UniProt ID
Human	5580 ;	Q05655 ;
Mouse	18753 ;	P28867 ;
Rat	170538 ;	P09215 ;

Cellular Localization

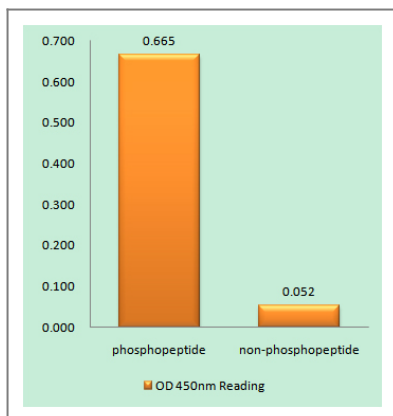
Cytoplasm . Cytoplasm , perinuclear region . Nucleus . Cell membrane ; Peripheral membrane protein . Mitochondrion . Endomembrane system . Translocates to the mitochondria upon apoptotic stimulation. Upon activation , translocates to the plasma membrane followed by partial location to the endolysosomes (PubMed:17303575) . .

Tissue specificity Epithelium , Hippocampus , Liver , Platelet , Skin ,

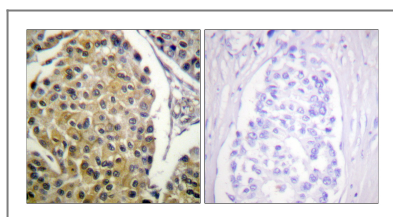
Function

Catalytic activity: ATP + a protein = ADP + a phosphoprotein. , Domain: The C1 domain , containing the phorbol ester/DAG-type region 1 (C1A) and 2 (C1B) , is the diacylglycerol sensor. , Domain: The C2 domain is a non-calcium binding domain. It binds proteins containing phosphotyrosine in a sequence-specific manner. , enzyme regulation: Three specific sites; Thr-507 (activation loop of the kinase domain) , Ser-645 (turn motif) and Ser-664 (hydrophobic region) , need to be phosphorylated for its full activation. , Function: This is calcium-independent , phospholipid-dependent , serine- and threonine-specific enzyme. PKC is activated by diacylglycerol which in turn phosphorylates a range of cellular proteins. PKC also serves as the receptor for phorbol esters , a class of tumor promoters. May play a role in antigen-dependent control of B-cell function. Phosphorylates MUC1 in the C-terminal and regulates the interaction between MUC1 and beta-catenin. , PTM: Phosphorylated on Thr-507 , within the activation loop. Autophosphorylated and/or phosphorylated. Although the Thr-507 phosphorylation occurs it is not a prerequisite for enzymatic activity. , similarity: Belongs to the protein kinase superfamily. AGC Ser/Thr protein kinase family. PKC subfamily. , similarity: Contains 1 AGC-kinase C-terminal domain. , similarity: Contains 1 C2 domain. , similarity: Contains 1 protein kinase domain. , similarity: Contains 2 phorbol-ester/DAG-type zinc fingers. , subunit: Interacts with PDK1 , RAD9A , CDCP1 and MUC1. ,

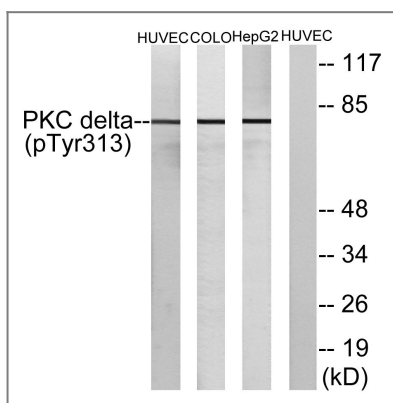
Validation Data



Enzyme-Linked Immunosorbent Assay (Phospho-ELISA) for Immunogen Phosphopeptide (Phospho-left) and Non-Phosphopeptide (Phospho-right), using PKC delta (Phospho-Tyr313) Antibody



Immunohistochemistry analysis of paraffin-embedded human breast carcinoma, using PKC delta (Phospho-Tyr313) Antibody. The picture on the right is blocked with the phospho peptide.



Western blot analysis of lysates from HepG2 cells, COLO205 cells and HUVEC cells, using PKC delta (Phospho-Tyr313) Antibody. The lane on the right is blocked with the phospho peptide.

Contact information

Orders: order.cn@immunoway.com
 Support: support.cn@immunoway.com
 Telephone: 400-8787-807(China)
 Website: <http://www.immunoway.com.cn>
 Address: 2200 Ringwood Ave San Jose, CA 95131 USA



Please scan the QR code to access additional product information:
PKC δ (Phospho Tyr313) Rabbit pAb

For Research Use Only. Not for Use in Diagnostic Procedures.

[Antibody](#) | [ELISA Kits](#) | [Protein](#) | [Reagents](#)