

## MAPKAPK-2 (Phospho Thr222) Rabbit pAb

CatalogNo: YP0692 **Orthogonal Validated** 

### Key Features

#### Host Species

- Rabbit

#### Reactivity

- Human, Mouse, Rat, Monkey

#### Applications

- WB, IHC, IF, ELISA

#### MW

- 45kD (Observed)

#### Isotype

- IgG

### Storage

**Storage\*** -15°C to -25°C/1 year (Do not lower than -25°C)

**Formulation** Liquid in PBS containing 50% glycerol, 0.5% BSA and 0.02% sodium azide.

### Recommended Dilution Ratios

**WB 1:500-1:2000**

**IHC 1:100-1:300**

**ELISA 1:20000**

**IF 1:50-200**

### Basic Information

**Clonality** Polyclonal

### Immunogen Information

**Immunogen** The antiserum was produced against synthesized peptide derived from human MAPKAPK-2 around the phosphorylation site of Thr222. AA range:188-237

## Specificity

Phospho-MAPKAPK-2 (T222) Polyclonal Antibody detects endogenous levels of MAPKAPK-2 protein only when phosphorylated at T222. The name of modified sites may be influenced by many factors, such as species (the modified site was not originally found in human samples) and the change of protein sequence (the previous protein sequence is incomplete, and the protein sequence may be prolonged with the development of protein sequencing technology). When naming, we will use the "numbers" in historical reference to keep the sites consistent with the reports. The antibody binds to the following modification sequence (lowercase letters are modification sites):LTtPC

---

## | Target Information

**Gene name** MAPKAPK2

**Protein Name** MAP kinase-activated protein kinase 2

Organism	Gene ID	UniProt ID
Human	<a href="#">9261</a> ;	<a href="#">P49137</a> ;
Mouse	<a href="#">17164</a> ;	<a href="#">P49138</a> ;

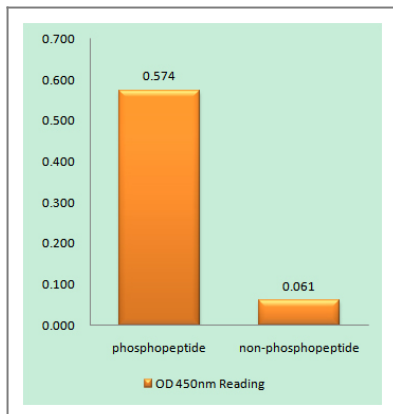
**Cellular Localization** Cytoplasm . Nucleus . Phosphorylation and subsequent activation releases the autoinhibitory helix, resulting in the export from the nucleus into the cytoplasm.

**Tissue specificity** Expressed in all tissues examined.

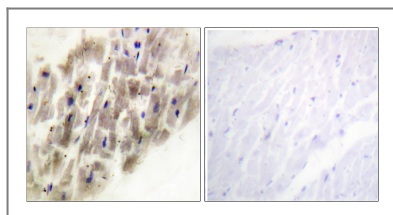
**Function** Catalytic activity:ATP + a protein = ADP + a phosphoprotein.,enzyme regulation:Seems to be activated by two distinct pathways: the first involves the stimulation of p42/p44 MAPK by growth factors, the second, triggered by stress and heat shock, depends on the activation of MPK2 and upstream MAPKK/MAPKKK.,Function:Its physiological substrate seems to be the small heat shock protein (HSP27/HSP25). In vitro can phosphorylate glycogen synthase at 'Ser-7' and tyrosine hydroxylase (on 'Ser-19' and 'Ser-40'). This kinase phosphorylates Ser in the peptide sequence, Hyd-X-R-X(2)-S, where Hyd is a large hydrophobic residue (By similarity). Mediates both ERK and p38 MAPK/MAPK14 dependent neutrophil responses. Participates in TNF alpha-stimulated exocytosis of secretory vesicles in neutrophils. Plays a role in phagocytosis-induced respiratory burst activity.,PTM:Phosphorylated and activated by MAP kinase.,similarity:Belongs to the protein kinase superfamily. CAMK Ser/Thr protein kinase family.,similarity:Contains 1 protein kinase domain.,subunit:Interacts with PHC2.,tissue specificity:Expressed in all tissues examined.,

---

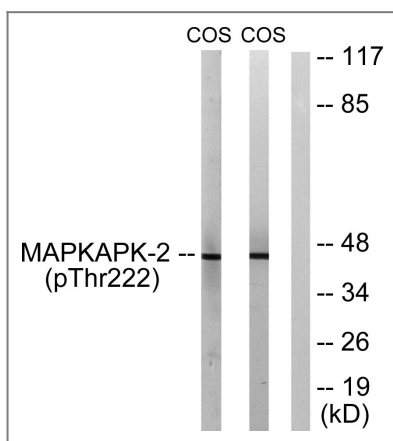
## | Validation Data



Enzyme-Linked Immunosorbent Assay (Phospho-ELISA) for Immunogen Phosphopeptide (Phospho-left) and Non-Phosphopeptide (Phospho-right), using MAPKAPK-2 (Phospho-Thr222) Antibody



Immunohistochemistry analysis of paraffin-embedded human heart, using MAPKAPK-2 (Phospho-Thr222) Antibody. The picture on the right is blocked with the phospho peptide.



Western blot analysis of lysates from COS7 cells treated with UV 15', using MAPKAPK-2 (Phospho-Thr222) Antibody. The lane on the right is blocked with the phospho peptide.

## Contact information

Orders: [order.cn@immunoway.com](mailto:order.cn@immunoway.com)  
 Support: [support.cn@immunoway.com](mailto:support.cn@immunoway.com)  
 Telephone: 400-8787-807(China)  
 Website: <http://www.immunoway.com.cn>  
 Address: 2200 Ringwood Ave San Jose, CA 95131 USA



Please scan the QR code to access additional product information:  
**MAPKAPK-2**  
**(Phospho Thr222)**  
**Rabbit pAb**