

## ALK (Phospho Tyr1507) Rabbit pAb

CatalogNo: YP0685 **Orthogonal Validated** 

### Key Features

#### Host Species

- Rabbit

#### Reactivity

- Human, Mouse, Monkey

#### Applications

- WB, IHC, IF, ELISA

#### MW

- 150-240kD (Observed)

#### Isotype

- IgG

### Storage

**Storage\*** -15°C to -25°C/1 year (Do not lower than -25°C)

**Formulation** Liquid in PBS containing 50% glycerol, 0.5% BSA and 0.02% sodium azide.

### Recommended Dilution Ratios

**WB 1:500-1:2000**

**IHC 1:100-1:300**

**ELISA 1:5000**

**IF 1:50-200**

### Basic Information

**Clonality** Polyclonal

### Immunogen Information

**Immunogen** The antiserum was produced against synthesized peptide derived from human ALK around the phosphorylation site of Tyr1507. AA range:1473-1522

## Specificity

Phospho-ALK (Y1507) Polyclonal Antibody detects endogenous levels of ALK protein only when phosphorylated at Y1507. The name of modified sites may be influenced by many factors, such as species (the modified site was not originally found in human samples) and the change of protein sequence (the previous protein sequence is incomplete, and the protein sequence may be prolonged with the development of protein sequencing technology). When naming, we will use the "numbers" in historical reference to keep the sites consistent with the reports. The antibody binds to the following modification sequence (lowercase letters are modification sites):PTyGS

---

## | Target Information

**Gene name** ALK

**Protein Name** ALK tyrosine kinase receptor

Organism	Gene ID	UniProt ID
Human	<a href="#">238;</a>	<a href="#">Q9UM73;</a>
Mouse	<a href="#">11682;</a>	<a href="#">P97793;</a>

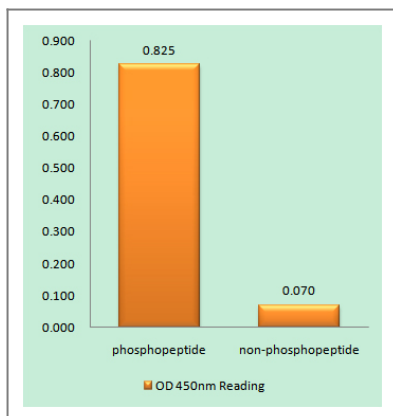
**Cellular Localization** Cell membrane ; Single-pass type I membrane protein . Membrane attachment is essential for promotion of neuron-like differentiation and cell proliferation arrest through specific activation of the MAP kinase pathway. .

**Tissue specificity** Expressed in brain and CNS. Also expressed in the small intestine and testis, but not in normal lymphoid cells.

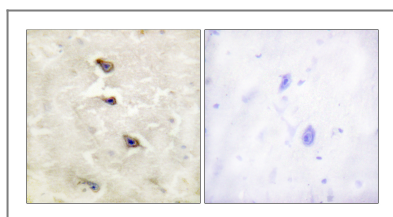
**Function** Catalytic activity:ATP + a [protein]-L-tyrosine = ADP + a [protein]-L-tyrosine phosphate.,disease:A chromosomal aberration involving ALK is associated with anaplastic large-cell lymphoma (ALCL). Translocation t(2;17)(p23;q25) with ALO17.,disease:A chromosomal aberration involving ALK is associated with inflammatory myofibroblastic tumors (IMTs). Translocation t(2;11)(p23;p15) with CARS; translocation t(2;4)(p23;q21) with SEC31A.,disease:A chromosomal aberration involving ALK is found in a form of non-Hodgkin lymphoma. Translocation t(2;5)(p23;q35) with NPM1. The resulting chimeric NPM1-ALK protein homodimerize and the kinase becomes constitutively activated. The constitutively active fusion proteins are responsible for 5-10% of non-Hodgkin lymphomas.,Function:Orphan receptor with a tyrosine-protein kinase activity. Appears to play an important role in the normal development and function of the nervous system. Phosphorylates almost exclusively at the first tyrosine of the Y-x-x-x-Y-Y motif.,PTM:N-glycosylated.,similarity:Belongs to the protein kinase superfamily. Tyr protein kinase family. Insulin receptor subfamily.,similarity:Contains 1 LDL-receptor class A domain.,similarity:Contains 1 protein kinase domain.,similarity:Contains 2 MAM domains.,subunit:Homodimer. When bound to ligand.,tissue specificity:Expressed in brain and CNS. Also expressed in the small intestine and testis, but not in normal lymphoid cells.,

---

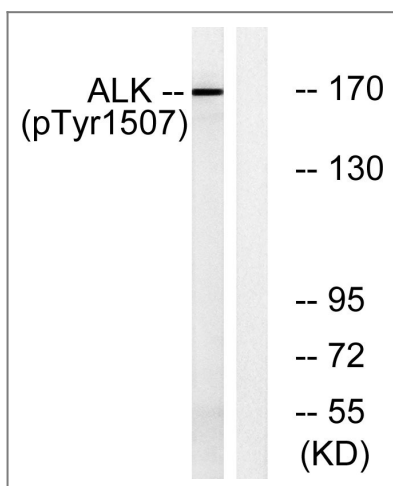
## | Validation Data



Enzyme-Linked Immunosorbent Assay (Phospho-ELISA) for Immunogen Phosphopeptide (Phospho-left) and Non-Phosphopeptide (Phospho-right), using ALK (Phospho-Tyr1507) Antibody



Immunohistochemistry analysis of paraffin-embedded human brain, using ALK (Phospho-Tyr1507) Antibody. The picture on the right is blocked with the phospho peptide.



Western blot analysis of lysates from COS7 cells treated with anisomycin 25ug/ml 30', using ALK (Phospho-Tyr1507) Antibody. The lane on the right is blocked with the phospho peptide.

## Contact information

Orders: [order.cn@immunoway.com](mailto:order.cn@immunoway.com)  
 Support: [support.cn@immunoway.com](mailto:support.cn@immunoway.com)  
 Telephone: 400-8787-807(China)  
 Website: <http://www.immunoway.com.cn>  
 Address: 2200 Ringwood Ave San Jose, CA 95131 USA



Please scan the QR code to access additional product information:  
**ALK (Phospho Tyr1507) Rabbit pAb**