

Flt-1/VEGFR1 (Phospho Tyr1333) Rabbit pAb

CatalogNo: YP0678 **Orthogonal Validated** 

Key Features

Host Species

- Rabbit

Reactivity

- Human, Mouse, Rat

Applications

- WB, IHC, IF, ELISA

MW

- 151kD (Observed)

Isotype

- IgG

Storage

Storage* -15°C to -25°C/1 year (Do not lower than -25°C)

Formulation Liquid in PBS containing 50% glycerol, 0.5% BSA and 0.02% sodium azide.

Recommended Dilution Ratios

WB 1:500-1:2000

IHC: 1:100-300

ELISA 1:20000

IF 1:100-300

Not yet tested in other applications.

Basic Information

Clonality Polyclonal

Immunogen Information

Immunogen The antiserum was produced against synthesized peptide derived from human VEGFR1 around the phosphorylation site of Tyr1333. AA range:1289-1338

Specificity

Phospho-Flt-1 (Y1333) Polyclonal Antibody detects endogenous levels of Flt-1 protein only when phosphorylated at Y1333. The name of modified sites may be influenced by many factors, such as species (the modified site was not originally found in human samples) and the change of protein sequence (the previous protein sequence is incomplete, and the protein sequence may be prolonged with the development of protein sequencing technology). When naming, we will use the "numbers" in historical reference to keep the sites consistent with the reports. The antibody binds to the following modification sequence (lowercase letters are modification sites):VLYST

Target Information

Gene name FLT1

Protein Name Vascular endothelial growth factor receptor 1

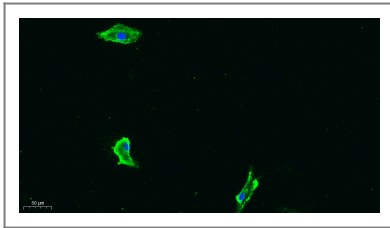
Organism	Gene ID	UniProt ID
Human	2321 ;	P17948 ;
Mouse	14254 ;	P35969 ;
Rat	54251 ;	P53767 ;

Cellular Localization [Isoform 1]: Cell membrane; Single-pass type I membrane protein. Endosome. Autophosphorylation promotes ubiquitination and endocytosis.; [Isoform 2]: Secreted .; [Isoform 3]: Secreted.; [Isoform 4]: Secreted.; [Isoform 5]: Cytoplasm .; [Isoform 6]: Cytoplasm .; [Isoform 7]: Cytoplasm .

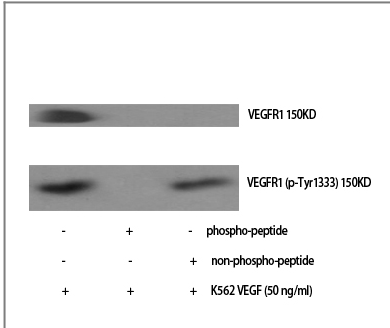
Tissue specificity Detected in normal lung , but also in placenta , liver , kidney , heart and brain tissues. Specifically expressed in most of the vascular endothelial cells , and also expressed in peripheral blood monocytes. Isoform 2 is strongly expressed in placenta. Isoform 3 is expressed in corneal epithelial cells (at protein level) . Isoform 3 is expressed in vascular smooth muscle cells (VSMC) .

Function Alternative products:Additional isoforms seem to exist ,Catalytic activity:ATP + a [protein]-L-tyrosine = ADP + a [protein]-L-tyrosine phosphate. ,Function:Receptor for VEGF , VEGFB and PGF. Has a tyrosine-protein kinase activity. The VEGF-kinase ligand/receptor signaling system plays a key role in vascular development and regulation of vascular permeability. Isoform sFlt1 may have an inhibitory role in angiogenesis. ,similarity:Belongs to the protein kinase superfamily. Tyr protein kinase family. ,similarity:Belongs to the protein kinase superfamily. Tyr protein kinase family. CSF-1/PDGF receptor subfamily. ,similarity:Contains 1 protein kinase domain. ,similarity:Contains 7 Ig-like C2-type (immunoglobulin-like) domains. ,subunit:Interacts in vitro with various phosphotyrosine-binding proteins , including PLC-gammas , PTPN11 , GRB2 , CRK and NCK1. ,tissue specificity:Mostly in normal lung , but also in placenta , liver , kidney , heart and brain tissues. Specifically expressed in most of the vascular endothelial cells , and also expressed in peripheral blood monocytes. It is not expressed in tumor cell lines. Isoform sFlt1 is strongly expressed in placenta. ,

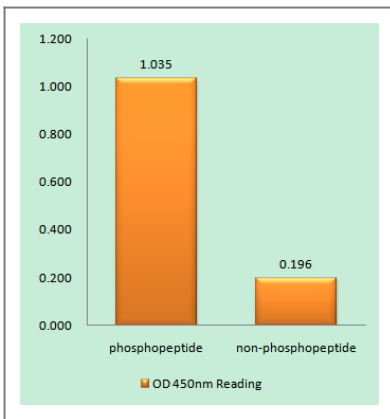
Validation Data



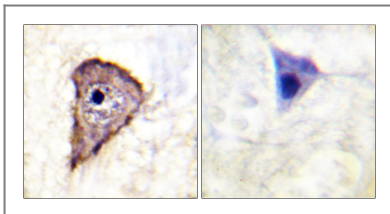
Immunofluorescence analysis of A549. 1, primary Antibody was diluted at 1:200 (4°C overnight). 2, Goat Anti Rabbit IgG (H&L) - Alexa Fluor 488 Secondary antibody was diluted at 1:1000 (room temperature, 50min).3, DAPI (blue) 10min.



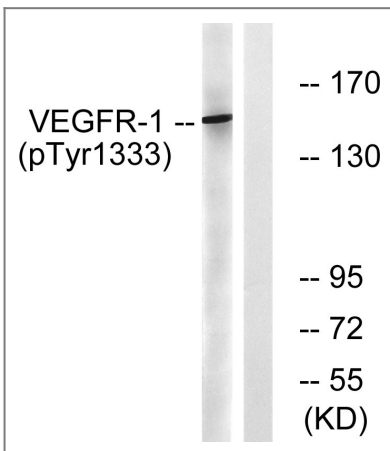
Western Blot analysis of various cells using Phospho-Flt-1 (Y1333) Polyclonal Antibody



Enzyme-Linked Immunosorbent Assay (Phospho-ELISA) for Immunogen Phosphopeptide (Phospho-left) and Non-Phosphopeptide (Phospho-right), using VEGFR1 (Phospho-Tyr1333) Antibody



Immunohistochemistry analysis of paraffin-embedded human brain, using VEGFR1 (Phospho-Tyr1333) Antibody. The picture on the right is blocked with the phospho peptide.



Western blot analysis of lysates from K562 cells treated with etoposide 25uM 24h, using VEGFR1 (Phospho-Tyr1333) Antibody. The lane on the right is blocked with the phospho peptide.

Contact information

Orders: order.cn@immunoway.com
Support: support.cn@immunoway.com
Telephone: 400-8787-807(China)
Website: http://www.immunoway.com.cn
Address: 2200 Ringwood Ave San Jose, CA 95131 USA



Please scan the QR code
to access additional
product information:
FIt-1/VEGFR1
(Phospho Tyr1333)
Rabbit pAb

For Research Use Only. Not for Use in Diagnostic Procedures.

[Antibody](#) | [ELISA Kits](#) | [Protein](#) | [Reagents](#)