

## p23 (Phospho Ser113) Rabbit pAb

CatalogNo: YP0673 **Orthogonal Validated** 

### Key Features

#### Host Species

- Rabbit

#### Reactivity

- Human, Mouse, Rat

#### Applications

- WB, IHC, IF, ELISA

#### MW

- 24kD (Observed)

#### Isotype

- IgG

### Storage

**Storage\*** -15°C to -25°C/1 year (Do not lower than -25°C)

**Formulation** Liquid in PBS containing 50% glycerol, 0.5% BSA and 0.02% sodium azide.

### Recommended Dilution Ratios

**WB 1:500-1:2000**

**IHC 1:100-1:300**

**ELISA 1:10000**

**IF 1:50-200**

### Basic Information

**Clonality** Polyclonal

### Immunogen Information

**Immunogen** The antiserum was produced against synthesized peptide derived from human TEBP around the phosphorylation site of Ser113. AA range: 79-128

## Specificity

Phospho-p23 (S113) Polyclonal Antibody detects endogenous levels of p23 protein only when phosphorylated at S113. The name of modified sites may be influenced by many factors, such as species (the modified site was not originally found in human samples) and the change of protein sequence (the previous protein sequence is incomplete, and the protein sequence may be prolonged with the development of protein sequencing technology). When naming, we will use the "numbers" in historical reference to keep the sites consistent with the reports. The antibody binds to the following modification sequence (lowercase letters are modification sites):DDsDE

---

## | Target Information

**Gene name** PTGES3

**Protein Name** Prostaglandin E synthase 3

Organism	Gene ID	UniProt ID
Human	<a href="#">10728;</a>	<a href="#">Q15185;</a>
Mouse	<a href="#">56351;</a>	<a href="#">Q9R0Q7;</a>
Rat	<a href="#">362809;</a>	<a href="#">P83868;</a>

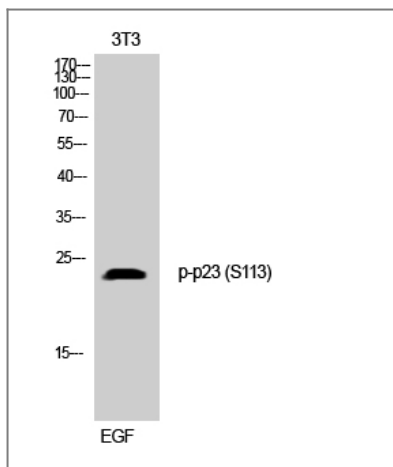
**Cellular Localization** Cytoplasm .

**Tissue specificity** Embryonic kidney, Epithelium, Liver, Lung, Pituitary, Platelet, T-cell, Testis, Uri

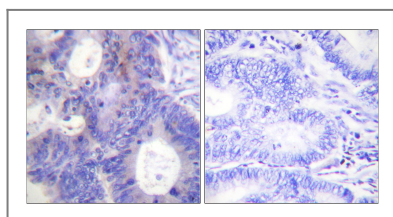
**Function** Catalytic activity:(5Z,13E)-(15S)-9-alpha,11-alpha-epidioxy-15-hydroxyprosta-5,13-dienoate = (5Z,13E)-(15S)-11-alpha,15-dihydroxy-9-oxoprosta-5,13-dienoate.,Function:Molecular chaperone that localizes to genomic response elements in a hormone-dependent manner and disrupts receptor-mediated transcriptional activation, by promoting disassembly of transcriptional regulatory complexes.,pathway:Lipid metabolism; prostaglandin biosynthesis.,similarity:Belongs to the p23/wos2 family.,similarity:Contains 1 CS domain.,subunit:Binds to telomerase and to the progesterone receptor.,

---

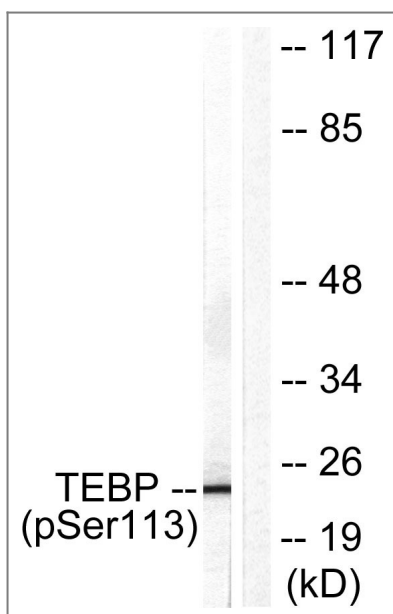
## | Validation Data



Western Blot analysis of 3T3 cells using Phospho-p23 (S113) Polyclonal Antibody



Immunohistochemistry analysis of paraffin-embedded human colon carcinoma, using TEBP (Phospho-Ser113) Antibody. The picture on the right is blocked with the phospho peptide.



Western blot analysis of lysates from NIH/3T3 cells treated with EGF 200ng/ml 30', using TEBP (Phospho-Ser113) Antibody. The lane on the right is blocked with the phospho peptide.

## Contact information

Orders: [order.cn@immunoway.com](mailto:order.cn@immunoway.com)  
 Support: [support.cn@immunoway.com](mailto:support.cn@immunoway.com)  
 Telephone: 400-8787-807(China)  
 Website: <http://www.immunoway.com.cn>  
 Address: 2200 Ringwood Ave San Jose, CA 95131 USA



Please scan the QR code to access additional product information:  
**p23 (Phospho Ser113) Rabbit pAb**