

## PDE4B/C/D (Phospho Ser133/119/190) Rabbit pAb

CatalogNo: YP0668

Orthogonal Validated 

### Key Features

#### Host Species

- Rabbit

#### Reactivity

- Human, Mouse, Rat

#### Applications

- WB, IHC, IF, ELISA

#### MW

- 76kD (Observed)

#### Isotype

- IgG

### Recommended Dilution Ratios

WB 1:500-1:2000

IHC 1:100-1:300

ELISA 1:20000

IF 1:50-200

### Storage

**Storage\*** -15°C to -25°C/1 year (Do not lower than -25°C)**Formulation** Liquid in PBS containing 50% glycerol, 0.5% BSA and 0.02% sodium azide.

### Basic Information

**Clonality** Polyclonal

### Immunogen Information

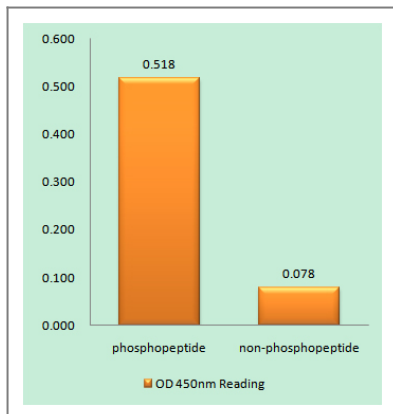
**Immunogen** The antiserum was produced against synthesized peptide derived from human PDE4D around the phosphorylation site of Ser190/53. AA range: 156-205

**Specificity** This antibody detects endogenous levels of PDE4B/C/D only when phosphorylated at Human:S190, Mouse:S129, Rat:S185..The name of modified sites may be influenced by many factors, such as species (the modified site was not originally found in human samples) and the change of protein sequence (the previous protein sequence is incomplete, and the protein sequence may be prolonged with the development of protein sequencing technology). When naming, we will use the "numbers" in historical reference to keep the sites consistent with the reports. The antibody binds to the following modification sequence (lowercase letters are modification sites):RESFL

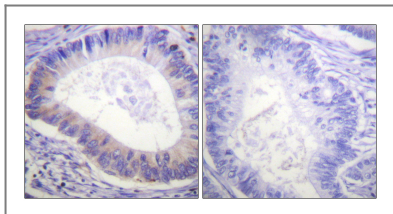
## Target Information

Gene name	PDE4B/PDE4C/PDE4D		
Protein Name	cAMP-specific 3',5'-cyclic phosphodiesterase 4D		
	Organism	Gene ID	UniProt ID
	Human	<a href="#">5144</a> ;	<a href="#">Q07343</a> ; <a href="#">Q08493</a> ; <a href="#">Q08499</a> ;
	Mouse	<a href="#">110385</a> ; <a href="#">238871</a> ;	
	Rat	<a href="#">24626</a> ; <a href="#">24627</a> ;	<a href="#">P14646</a> ; <a href="#">P14644</a> ; <a href="#">P14270</a> ;
Cellular Localization	[Isoform PDE4B5]: Cytoplasm . Cell membrane .		
Tissue specificity	Expressed in brain, heart, lung and skeletal muscle (PubMed:17519386). Expressed in white blood cells (PubMed:8392015). ; [Isoform PDE4B5]: Brain-specific isoform.		
Function	Alternative products:Additional isoforms seem to exist,Catalytic activity:Adenosine 3',5'-cyclic phosphate + H(2)O = adenosine 5'-phosphate.,enzyme regulation:Inhibited by rolipram.,Function:May be involved in mediating central nervous system effects of therapeutic agents ranging from antidepressants to antiasthmatic and anti-inflammatory agents.,pathway:Purine metabolism; cAMP degradation; AMP from cAMP: step 1/1.,similarity:Belongs to the cyclic nucleotide phosphodiesterase family.,tissue specificity:Expressed in brain, heart, lung and skeletal muscle.,		

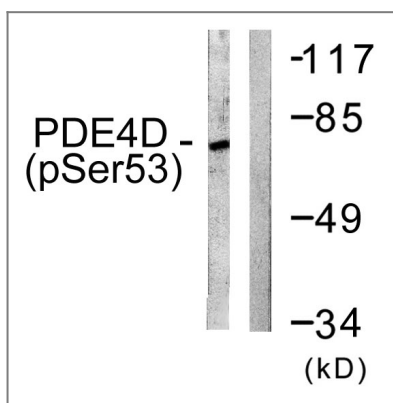
## Validation Data



Enzyme-Linked Immunosorbent Assay (Phospho-ELISA) for Immunogen Phosphopeptide (Phospho-left) and Non-Phosphopeptide (Phospho-right), using PDE4D (Phospho-Ser190/53) Antibody



Immunohistochemistry analysis of paraffin-embedded human colon carcinoma, using PDE4D (Phospho-Ser190/53) Antibody. The picture on the right is blocked with the phospho peptide.



Western blot analysis of lysates from K562 cells treated with H<sub>2</sub>O<sub>2</sub> 100uM 30', using PDE4D (Phospho-Ser190/53) Antibody. The lane on the right is blocked with the phospho peptide.

## Contact information

Orders: order.cn@immunoway.com  
 Support: support.cn@immunoway.com  
 Telephone: 400-8787-807(China)  
 Website: <http://www.immunoway.com.cn>  
 Address: 2200 Ringwood Ave San Jose, CA 95131 USA



Please scan the QR code to access additional product information:

**PDE4B/C/D**  
**(Phospho**  
**Ser133/119/190)**  
**Rabbit pAb**

For Research Use Only. Not for Use in Diagnostic Procedures.

[Antibody](#) | [ELISA Kits](#) | [Protein](#) | [Reagents](#)