

p90RSK (Phospho Thr359/Ser363) Rabbit pAb

CatalogNo: YP0665 **Orthogonal Validated** 

Key Features

Host Species

- Rabbit

Reactivity

- Human, Mouse, Rat

Applications

- WB, IHC, IF, ELISA

MW

- 83kD (Observed)

Isotype

- IgG

Storage

Storage* -15°C to -25°C/1 year (Do not lower than -25°C)

Formulation Liquid in PBS containing 50% glycerol, 0.5% BSA and 0.02% sodium azide.

Recommended Dilution Ratios

WB 1:500-1:2000

IHC 1:100-1:300

ELISA 1:5000

IF 1:50-200

Basic Information

Clonality Polyclonal

Immunogen Information

Immunogen The antiserum was produced against synthesized peptide derived from human p90 RSK around the phosphorylation site of Thr359 and Ser363. AA range:331-380

Specificity

This antibody detects endogenous levels of Rsk-1 only when phosphorylated at Thr359 or Ser363, and dually phosphorylated at two sites. The name of modified sites may be influenced by many factors, such as species (the modified site was not originally found in human samples) and the change of protein sequence (the previous protein sequence is incomplete, and the protein sequence may be prolonged with the development of protein sequencing technology). When naming, we will use the "numbers" in historical reference to keep the sites consistent with the reports. The antibody binds to the following modification sequence (lowercase letters are modification sites):SRtPKDsP

| Target Information

Gene name RPS6KA1 MAPKAPK1A RSK1

Protein Name Ribosomal protein S6 kinase alpha-1

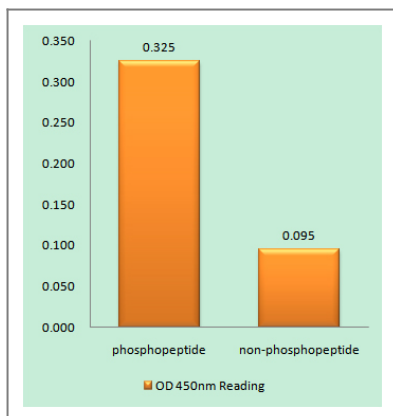
	Organism	Gene ID	UniProt ID
	Human	6195;	Q15418;
	Mouse		P18653;
	Rat	81771;	Q63531;

Cellular Localization Nucleus. Cytoplasm.

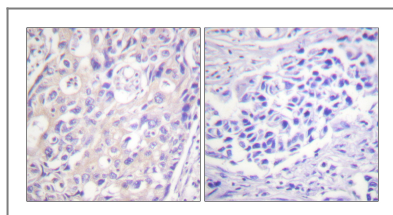
Tissue specificity Colon, Epithelium,

Function Catalytic activity: ATP + a protein = ADP + a phosphoprotein., Caution: The sequence shown here is derived from an Ensembl automatic analysis pipeline and should be considered as preliminary data., cofactor: Magnesium., enzyme regulation: Activated by multiple phosphorylations on threonine and serine residues., Function: Serine/threonine kinase that may play a role in mediating the growth-factor and stress induced activation of the transcription factor CREB., PTM: Autophosphorylated on Ser-380, as part of the activation process., similarity: Belongs to the protein kinase superfamily., similarity: Belongs to the protein kinase superfamily. AGC Ser/Thr protein kinase family. S6 kinase subfamily., similarity: Contains 1 AGC-kinase C-terminal domain., similarity: Contains 2 protein kinase domains., subunit: Forms a complex with either ERK1 or ERK2 in quiescent cells. Transiently dissociates following mitogenic stimulation.,

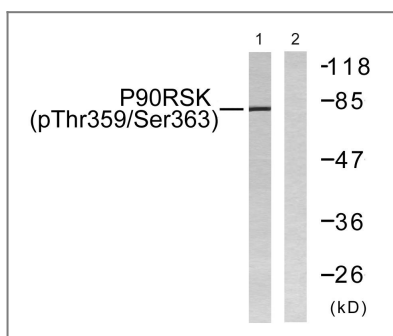
| Validation Data



Enzyme-Linked Immunosorbent Assay (Phospho-ELISA) for Immunogen Phosphopeptide (Phospho-left) and Non-Phosphopeptide (Phospho-right), using p90 RSK (Phospho-Thr359+Ser363) Antibody



Immunohistochemistry analysis of paraffin-embedded human breast carcinoma, using p90 RSK (Phospho-Thr359+Ser363) Antibody. The picture on the right is blocked with the phospho peptide.



Western blot analysis of lysates from 293 cells treated with PMA 125ng/ml 30', using p90 RSK (Phospho-Thr359+Ser363) Antibody. The lane on the right is blocked with the phospho peptide.

Contact information

Orders: order.cn@immunoway.com
 Support: support.cn@immunoway.com
 Telephone: 400-8787-807(China)
 Website: <http://www.immunoway.com.cn>
 Address: 2200 Ringwood Ave San Jose, CA 95131 USA



Please scan the QR code to access additional product information:
p90RSK (Phospho Thr359/Ser363) Rabbit pAb

For Research Use Only. Not for Use in Diagnostic Procedures.

[Antibody](#) | [ELISA Kits](#) | [Protein](#) | [Reagents](#)