

Cdc6 (Phospho Ser54) Rabbit pAb

CatalogNo: YP0623 **Orthogonal Validated** 

Key Features

Host Species

- Rabbit

Reactivity

- Human, Mouse, Monkey

Applications

- WB, IHC, IF, ELISA

MW

- 62kD (Observed)

Isotype

- IgG

Storage

Storage* -15°C to -25°C/1 year (Do not lower than -25°C)

Formulation Liquid in PBS containing 50% glycerol, 0.5% BSA and 0.02% sodium azide.

Recommended Dilution Ratios

WB 1:500-1:2000

IHC 1:100-1:300

ELISA 1:5000

IF 1:50-200

Basic Information

Clonality Polyclonal

Immunogen Information

Immunogen The antiserum was produced against synthesized peptide derived from human CDC6 around the phosphorylation site of Ser54. AA range:20-69

Specificity

Phospho-Cdc6 (S54) Polyclonal Antibody detects endogenous levels of Cdc6 protein only when phosphorylated at S54. The name of modified sites may be influenced by many factors, such as species (the modified site was not originally found in human samples) and the change of protein sequence (the previous protein sequence is incomplete, and the protein sequence may be prolonged with the development of protein sequencing technology). When naming, we will use the "numbers" in historical reference to keep the sites consistent with the reports. The antibody binds to the following modification sequence (lowercase letters are modification sites):PLSPR

Target Information

Gene name CDC6

Protein Name Cell division control protein 6 homolog

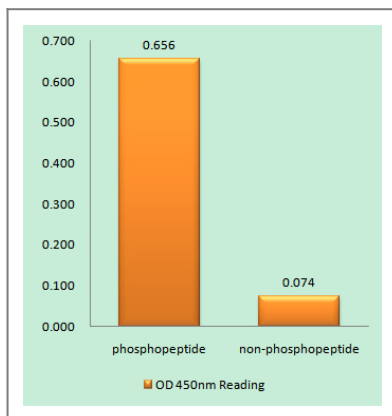
Organism	Gene ID	UniProt ID
Human	990 ;	Q99741 ;
Mouse	23834 ;	O89033 ;

Cellular Localization Nucleus . Cytoplasm . The protein is nuclear in G1 and cytoplasmic in S-phase cells (PubMed:9566895). .

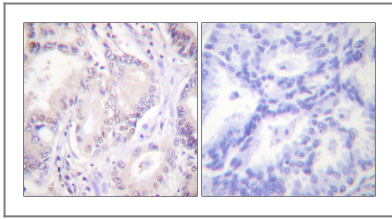
Tissue specificity Brain, Epithelium,

Function Function: Involved in the initiation of DNA replication. Also participates in checkpoint controls that ensure DNA replication is completed before mitosis is initiated., similarity: Belongs to the CDC6/cdc18 family., subcellular location: The protein is nuclear in G1 and cytoplasmic in S-phase cells., subunit: Interacts with PCNA, ORC1L, cyclin-CDK and HUWE1.,

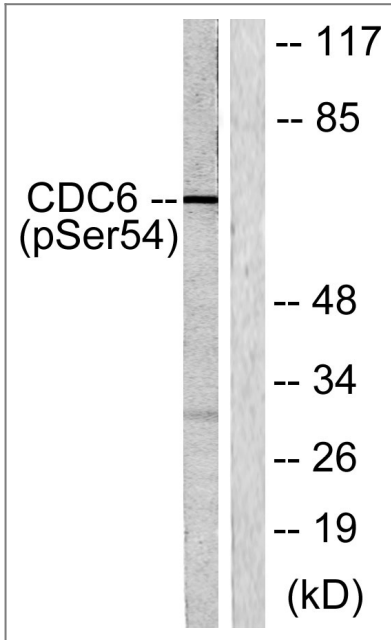
Validation Data



Enzyme-Linked Immunosorbent Assay (Phospho-ELISA) for Immunogen Phosphopeptide (Phospho-left) and Non-Phosphopeptide (Phospho-right), using CDC6 (Phospho-Ser54) Antibody



Immunohistochemistry analysis of paraffin-embedded human lung carcinoma, using CDC6 (Phospho-Ser54) Antibody. The picture on the right is blocked with the phospho peptide.



Western blot analysis of lysates from COS7 cells treated with EGF 200ng/ml 30', using CDC6 (Phospho-Ser54) Antibody. The lane on the right is blocked with the phospho peptide.

Contact information

Orders: order.cn@immunoway.com
Support: support.cn@immunoway.com
Telephone: 400-8787-807(China)
Website: <http://www.immunoway.com.cn>
Address: 2200 Ringwood Ave San Jose, CA 95131 USA



Please scan the QR code to access additional product information:
Cdc6 (Phospho Ser54) Rabbit pAb

For Research Use Only. Not for Use in Diagnostic Procedures.

[Antibody](#) | [ELISA Kits](#) | [Protein](#) | [Reagents](#)