

WNK1 (Phospho Thr60) Rabbit pAb

CatalogNo: YP0616 **Orthogonal Validated** 

Key Features

Host Species

- Rabbit

Reactivity

- Human, Mouse, Rat

Applications

- WB, IHC, IF, ELISA

MW

- 230kD (Observed)

Isotype

- IgG

Storage

Storage* -15°C to -25°C/1 year (Do not lower than -25°C)

Formulation Liquid in PBS containing 50% glycerol, 0.5% BSA and 0.02% sodium azide.

Recommended Dilution Ratios

WB 1:500-1:2000

IHC 1:100-1:300

ELISA 1:5000

IF 1:50-200

Basic Information

Clonality Polyclonal

Immunogen Information

Immunogen The antiserum was produced against synthesized peptide derived from human WNK1 around the phosphorylation site of Thr58. AA range:24-73

Specificity

Phospho-WNK1 (T60) Polyclonal Antibody detects endogenous levels of WNK1 protein only when phosphorylated at T60. The name of modified sites may be influenced by many factors, such as species (the modified site was not originally found in human samples) and the change of protein sequence (the previous protein sequence is incomplete, and the protein sequence may be prolonged with the development of protein sequencing technology). When naming, we will use the "numbers" in historical reference to keep the sites consistent with the reports. The antibody binds to the following modification sequence (lowercase letters are modification sites):RHtMD

| Target Information

Gene name WNK1

Protein Name Serine/threonine-protein kinase WNK1

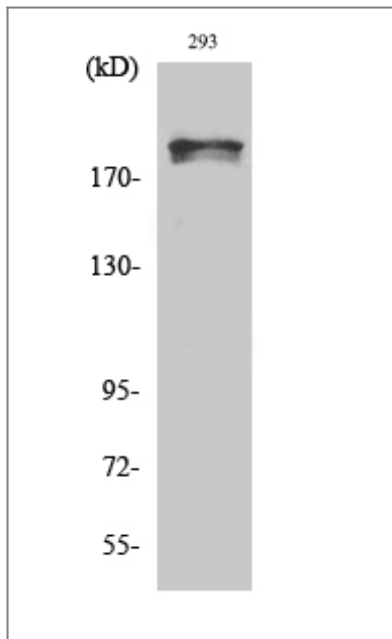
| Organism | Gene ID | UniProt ID |
|----------|-------------------------|-------------------------|
| Human | 65125; | Q9H4A3; |
| Mouse | 232341; | P83741; |
| Rat | 116477; | Q9JIH7; |

Cellular Localization Cytoplasm .

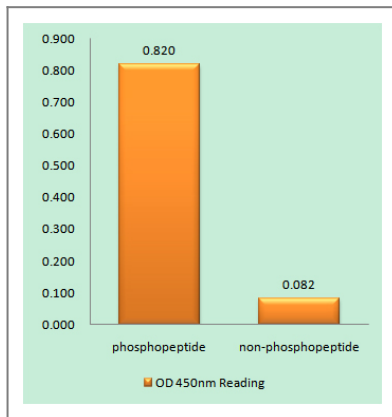
Tissue specificity Widely expressed, with highest levels observed in the testis, heart, kidney and skeletal muscle. Isoform 3 is kidney-specific and specifically expressed in the distal convoluted tubule (DCT) and connecting tubule (CNT) of the nephron.

Function Catalytic activity:ATP + a protein = ADP + a phosphoprotein.,Caution:Cys-250 is present instead of the conserved Lys which is expected to be an active site residue. Lys-233 appears to fulfill the required catalytic function.,Caution:PubMed:2507249 describes a peptide sequence containing a GlcNAc glycosylated Ser in position 164 while it is an Arg residue according to others.,cofactor:Magnesium.,Disease:Defects in WNK1 are a cause of pseudohypoaldosteronism type II (PHAII) [MIM:145260]. PHAII is an autosomal dominant disease characterized by severe hypertension, hyperkalemia, and sensitivity to thiazide diuretics which may result from a chloride shunt in the renal distal nephron.,enzyme regulation:By hypertonicity. Activation requires autophosphorylation of Ser-382. Phosphorylation of Ser-378 also promotes increased activity.,Function:Controls sodium and chloride ion transport by inhibiting the activity of WNK4, potentially by either phosphorylating the kinase or via an interaction between WNK4 and the autoinhibitory domain of WNK1. WNK4 regulates the activity of the thiazide-sensitive Na-Cl cotransporter, SLC12A3, by phosphorylation. WNK1 may also play a role in actin cytoskeletal reorganization.,PTM:O-glycosylated.,PTM:Phosphorylated upon DNA damage, probably by ATM or ATR.,similarity:Belongs to the protein kinase superfamily. Ser/Thr protein kinase family. WNK subfamily.,similarity:Contains 1 protein kinase domain.,subunit:Interacts with SYT2.,tissue specificity:Widely expressed, with highest levels observed in the testis, heart, kidney and skeletal muscle.,

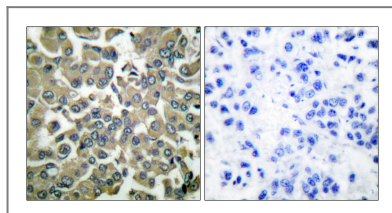
Validation Data



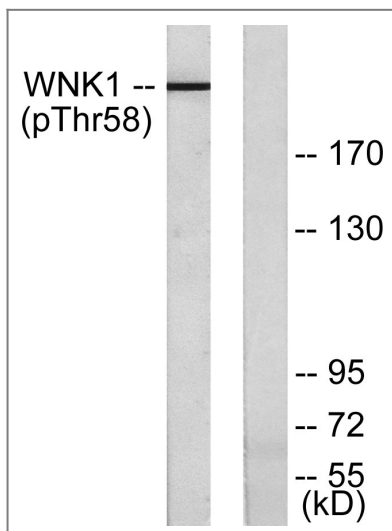
Western Blot analysis of various cells using Phospho-WNK1 (T60) Polyclonal Antibody



Enzyme-Linked Immunosorbent Assay (Phospho-ELISA) for Immunogen Phosphopeptide (Phospho-left) and Non-Phosphopeptide (Phospho-right), using WNK1 (Phospho-Thr58) Antibody



Immunohistochemistry analysis of paraffin-embedded human breast carcinoma, using WNK1 (Phospho-Thr58) Antibody. The picture on the right is blocked with the phospho peptide.



Western blot analysis of lysates from 293 cells treated with EGF 200ng/ml 30', using WNK1 (Phospho-Thr58) Antibody. The lane on the right is blocked with the phospho peptide.

| Contact information

Orders: order.cn@immunoway.com
Support: support.cn@immunoway.com
Telephone: 400-8787-807(China)
Website: <http://www.immunoway.com.cn>
Address: 2200 Ringwood Ave San Jose, CA 95131 USA



Please scan the QR code to access additional product information:
WNK1 (Phospho Thr60) Rabbit pAb

For Research Use Only. Not for Use in Diagnostic Procedures.

[Antibody](#) | [ELISA Kits](#) | [Protein](#) | [Reagents](#)