

## Syk (Phospho Tyr348) Rabbit pAb

CatalogNo: YP0614 **Orthogonal Validated** 

### Key Features

#### Host Species

- Rabbit

#### Reactivity

- Human, Mouse, Rat, Monkey

#### Applications

- WB, IHC, IF, ELISA

#### MW

- 72kD (Observed)

#### Isotype

- IgG

### Storage

**Storage\*** -15°C to -25°C/1 year (Do not lower than -25°C)

**Formulation** Liquid in PBS containing 50% glycerol, 0.5% BSA and 0.02% sodium azide.

### Recommended Dilution Ratios

**WB 1:500-1:2000**

**IHC 1:100-1:300**

**ELISA 1:10000**

**IF 1:50-200**

### Basic Information

**Clonality** Polyclonal

### Immunogen Information

**Immunogen** The antiserum was produced against synthesized peptide derived from human SYK around the phosphorylation site of Tyr348. AA range:314-363

## Specificity

Phospho-Syk (Y348) Polyclonal Antibody detects endogenous levels of Syk protein only when phosphorylated at Y348. The name of modified sites may be influenced by many factors, such as species (the modified site was not originally found in human samples) and the change of protein sequence (the previous protein sequence is incomplete, and the protein sequence may be prolonged with the development of protein sequencing technology). When naming, we will use the "numbers" in historical reference to keep the sites consistent with the reports. The antibody binds to the following modification sequence (lowercase letters are modification sites):EVyES

## Target Information

**Gene name** SYK

**Protein Name** Tyrosine-protein kinase SYK

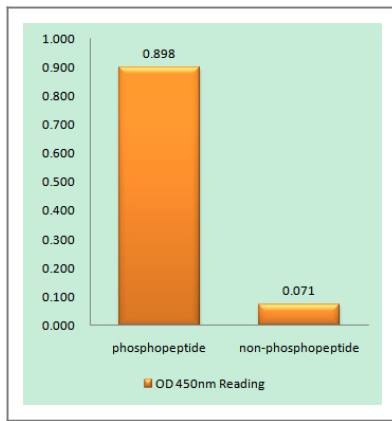
| Organism | Gene ID                 | UniProt ID               |
|----------|-------------------------|--------------------------|
| Human    | <a href="#">6850</a> ;  | <a href="#">P43405</a> ; |
| Mouse    | <a href="#">20963</a> ; | <a href="#">P48025</a> ; |
| Rat      | <a href="#">25155</a> ; | <a href="#">Q64725</a> ; |

**Cellular Localization** Cell membrane . Cytoplasm , cytosol .

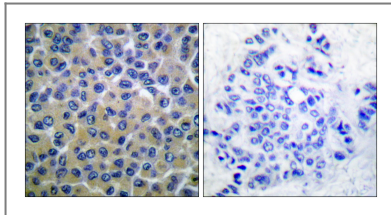
**Tissue specificity** Widely expressed in hematopoietic cells (at protein level) (PubMed:8163536) . Expressed in neutrophils (at protein level) (PubMed:15123770) . Within the B-cell compartment , expressed from pro- and pre-B cells to plasma cells (PubMed:8163536) .

**Function** Catalytic activity:ATP + a [protein]-L-tyrosine = ADP + a [protein]-L-tyrosine phosphate. ,Function:Positive effector of BCR-stimulated responses. Couples the B-cell antigen receptor (BCR) to the mobilization of calcium ion either through a phosphoinositide 3-kinase-dependent pathway , when not phosphorylated on tyrosines of the linker region , or through a phospholipase C-gamma-dependent pathway , when phosphorylated on Tyr-348 and Tyr-352. Thus the differential phosphorylation of Syk can determine the pathway by which BCR is coupled to the regulation of intracellular calcium ion. ,PTM:Autophosphorylated. ,PTM:Phosphorylation on Tyr-323 creates a binding site for c-Cbl , an adapter protein that serves as a negative regulator of BCR-stimulated calcium ion signaling. ,PTM:Phosphorylation on Tyr-348 and Tyr-352 enhances the phosphorylation and activation of phospholipase C-gamma and the early phase of calcium ion mobilization via a phosphoinositide 3-kinase-independent pathway. ,PTM:Ubiquitinated by CBLB after BCR activation; which promotes proteasomal degradation. ,similarity:Belongs to the protein kinase superfamily. Tyr protein kinase family. ,similarity:Belongs to the protein kinase superfamily. Tyr protein kinase family. SYK/ZAP-70 subfamily. ,similarity:Contains 1 protein kinase domain. ,similarity:Contains 2 SH2 domains. ,subunit:Interacts with CBL and SLA when it is phosphorylated. The interaction with SLA may link it to CBL , leading to its destruction. Interacts with phosphorylated NFAM1 (By similarity) . Interacts with Epstein-Barr virus LMP2A. Interacts through its SH2 domains with the phosphorylated ITAM domain of CD79A which stimulates SYK autophosphorylation and activation. Interacts with FCRL3. ,

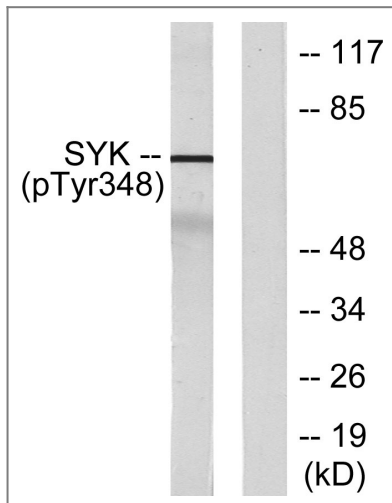
## Validation Data



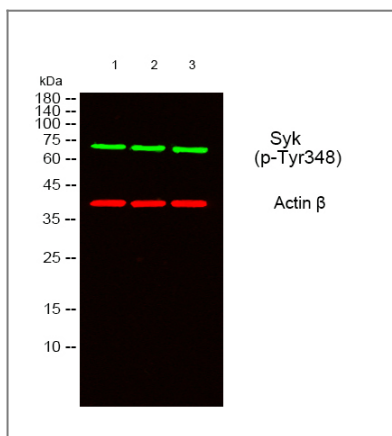
Enzyme-Linked Immunosorbent Assay (Phospho-ELISA) for Immunogen Phosphopeptide (Phospho-left) and Non-Phosphopeptide (Phospho-right), using SYK (Phospho-Tyr348) Antibody



Immunohistochemistry analysis of paraffin-embedded human breast carcinoma, using SYK (Phospho-Tyr348) Antibody. The picture on the right is blocked with the phospho peptide.



Western blot analysis of lysates from COS7 cells treated with EGF 200ng/ml 30', using SYK (Phospho-Tyr348) Antibody. The lane on the right is blocked with the phospho peptide.



Western blot analysis of lysates from 1) 3T3, 2) HT29, 3) HepG2 cells, (Green) primary antibody was diluted at 1:1000, 4°C over night, secondary antibody (cat:RS23920) was diluted at 1:10000, 37° 1hour. (Red) Actin  $\beta$  Monoclonal Antibody (5B7) (cat:YM3028) antibody was diluted at 1:5000 as loading control, 4°C over night, secondary antibody (cat:RS23710) was diluted at 1:10000, 37° 1hour.

## Contact information

Orders: order.cn@immunoway.com  
Support: support.cn@immunoway.com  
Telephone: 400-8787-807(China)  
Website: http://www.immunoway.com.cn  
Address: 2200 Ringwood Ave San Jose, CA 95131 USA



Please scan the QR code  
to access additional  
product information:  
**Syk (Phospho  
Tyr348) Rabbit pAb**

---

For Research Use Only. Not for Use in Diagnostic Procedures.

[Antibody](#) | [ELISA Kits](#) | [Protein](#) | [Reagents](#)