

## eEF2K (Phospho Ser366) Rabbit pAb

CatalogNo: YP0599 **Orthogonal Validated** 

### Key Features

#### Host Species

- Rabbit

#### Reactivity

- Human,Rat

#### Applications

- WB,IHC,IF,ELISA

#### MW

- 105kD (Observed)

#### Isotype

- IgG

### Storage

**Storage\*** -15°C to -25°C/1 year(Do not lower than -25°C)

**Formulation** Liquid in PBS containing 50% glycerol, 0.5% BSA and 0.02% sodium azide.

### Recommended Dilution Ratios

**WB 1:500-1:2000**

**IHC 1:100-1:300**

**ELISA 1:40000**

**IF 1:50-200**

### Basic Information

**Clonality** Polyclonal

### Immunogen Information

**Immunogen** The antiserum was produced against synthesized peptide derived from human eEF2K around the phosphorylation site of Ser366. AA range:331-380

**Specificity**

Phospho-eEF2K (S366) Polyclonal Antibody detects endogenous levels of eEF2K protein only when phosphorylated at S366. The name of modified sites may be influenced by many factors, such as species (the modified site was not originally found in human samples) and the change of protein sequence (the previous protein sequence is incomplete, and the protein sequence may be prolonged with the development of protein sequencing technology). When naming, we will use the "numbers" in historical reference to keep the sites consistent with the reports. The antibody binds to the following modification sequence (lowercase letters are modification sites):TLsGS

---

## | Target Information

**Gene name**      EEF2K

**Protein Name**    Eukaryotic elongation factor 2 kinase

Organism	Gene ID	UniProt ID
Human	<a href="#">29904;</a>	<a href="#">O00418;</a>
Mouse	<a href="#">13631;</a>	<a href="#">O08796;</a>
Rat	<a href="#">25435;</a>	<a href="#">P70531;</a>

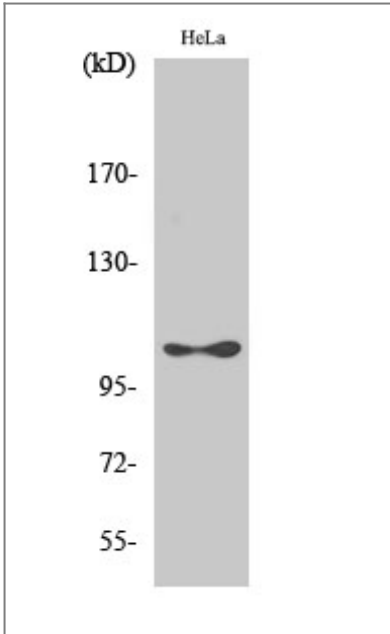
**Cellular Localization**    cytoplasm,cytosol,postsynaptic density,

**Tissue specificity**    Epithelium,Glial tumor,Lymph,T-cell,

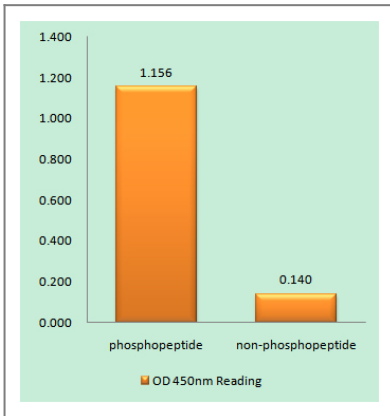
**Function**                Catalytic activity:ATP + [elongation factor 2] = ADP + [elongation factor 2] phosphate.,enzyme regulation:Undergoes calcium/calmodulin-dependent intramolecular autophosphorylation, and this results in it becoming partially calcium/calmodulin-independent.,Function:Phosphorylates eukaryotic elongation factor-2. Binds calmodulin.,similarity:Belongs to the protein kinase superfamily. Alpha-type protein kinase family.,similarity:Contains 1 alpha-type protein kinase domain.,subunit:Monomer or homodimer .,

---

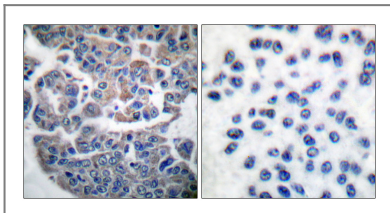
## | Validation Data



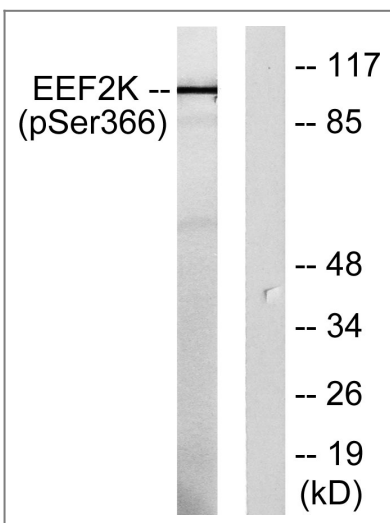
Western Blot analysis of various cells using Phospho-eEF2K (S366) Polyclonal Antibody diluted at 1:1000



Enzyme-Linked Immunosorbent Assay (Phospho-ELISA) for Immunogen Phosphopeptide (Phospho-left) and Non-Phosphopeptide (Phospho-right), using eEF2K (Phospho-Ser366) Antibody



Immunohistochemistry analysis of paraffin-embedded human breast carcinoma, using eEF2K (Phospho-Ser366) Antibody. The picture on the right is blocked with the phospho peptide.



Western blot analysis of lysates from HeLa cells treated with serum 10% 15', using eEF2K (Phospho-Ser366) Antibody. The lane on the right is blocked with the phospho peptide.

## | Contact information

Orders: order.cn@immunoway.com  
Support: support.cn@immunoway.com  
Telephone: 400-8787-807(China)  
Website: <http://www.immunoway.com.cn>  
Address: 2200 Ringwood Ave San Jose, CA 95131 USA



Please scan the QR code to access additional product information:  
**eEF2K (Phospho Ser366) Rabbit pAb**

---

For Research Use Only. Not for Use in Diagnostic Procedures.

[Antibody](#) | [ELISA Kits](#) | [Protein](#) | [Reagents](#)