

## GABAA R $\beta$ 1 (Phospho Ser434) Rabbit pAb

CatalogNo: YP0576

### Key Features

#### Host Species

- Rabbit

#### Reactivity

- Human, Mouse, Rat, Monkey

#### Applications

- WB, IHC, IF, ELISA

#### MW

- 55kD (Observed)

#### Isotype

- IgG

### Storage

**Storage\*** -15°C to -25°C/1 year (Do not lower than -25°C)

**Formulation** Liquid in PBS containing 50% glycerol, 0.5% BSA and 0.02% sodium azide.

### Recommended Dilution Ratios

**WB 1:500-1:2000**

**IHC 1:100-1:300**

**ELISA 1:40000**

**IF 1:50-200**

### Basic Information

**Clonality** Polyclonal

### Immunogen Information

**Immunogen** The antiserum was produced against synthesized peptide derived from human GABA-RB around the phosphorylation site of Ser434. AA range:401-450

**Specificity**

Phospho-GABAA R $\beta$ 1 (S434) Polyclonal Antibody detects endogenous levels of GABAA R $\beta$ 1 protein only when phosphorylated at S434. The name of modified sites may be influenced by many factors, such as species (the modified site was not originally found in human samples) and the change of protein sequence (the previous protein sequence is incomplete, and the protein sequence may be prolonged with the development of protein sequencing technology). When naming, we will use the "numbers" in historical reference to keep the sites consistent with the reports. The antibody binds to the following modification sequence (lowercase letters are modification sites):RASQL

---

## | Target Information

**Gene name** GABRB1

**Protein Name** Gamma-aminobutyric acid receptor subunit beta-1

Organism	Gene ID	UniProt ID
Human	<a href="#">2560</a> ;	<a href="#">P18505</a> ;
Mouse	<a href="#">14400</a> ;	<a href="#">P50571</a> ;
Rat	<a href="#">25450</a> ;	<a href="#">P15431</a> ;

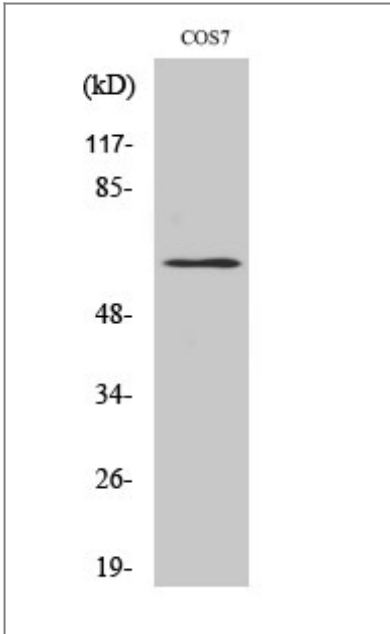
**Cellular Localization** Cell junction, synapse, postsynaptic cell membrane ; Multi-pass membrane protein . Cell membrane ; Multi-pass membrane protein .

**Tissue specificity** Brain,Epithelium,

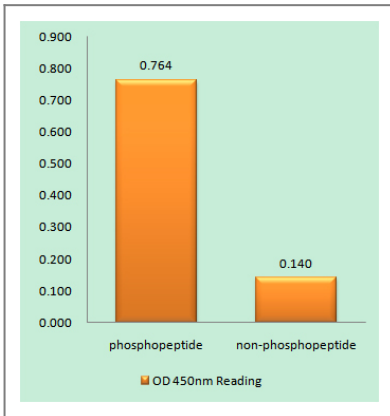
**Function** Function:GABA, the major inhibitory neurotransmitter in the vertebrate brain, mediates neuronal inhibition by binding to the GABA/benzodiazepine receptor and opening an integral chloride channel.,online information:Forbidden fruit - Issue 56 of March 2005,similarity:Belongs to the ligand-gated ionic channel (TC 1.A.9) family.,subunit:Binds UBQLN1 (By similarity). Generally pentameric. There are five types of GABA(A) receptor chains: alpha, beta, gamma, delta, and rho.,

---

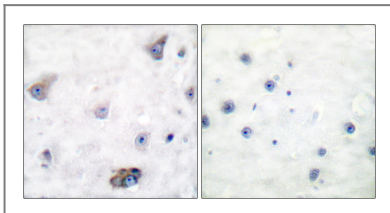
## | Validation Data



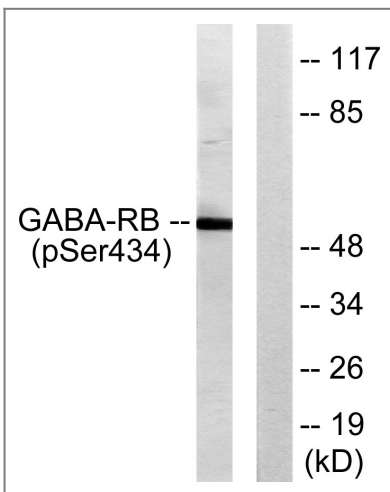
Western Blot analysis of various cells using Phospho-GABAA R $\beta$ 1 (S434) Polyclonal Antibody



Enzyme-Linked Immunosorbent Assay (Phospho-ELISA) for Immunogen Phosphopeptide (Phospho-left) and Non-Phosphopeptide (Phospho-right), using GABA-RB (Phospho-Ser434) Antibody



Immunohistochemistry analysis of paraffin-embedded human brain, using GABA-RB (Phospho-Ser434) Antibody. The picture on the right is blocked with the phospho peptide.



Western blot analysis of lysates from COS7 cells, using GABA-RB (Phospho-Ser434) Antibody. The lane on the right is blocked with the phospho peptide.

## Contact information

Orders: [order.cn@immunoway.com](mailto:order.cn@immunoway.com)  
Support: [support.cn@immunoway.com](mailto:support.cn@immunoway.com)  
Telephone: 400-8787-807(China)  
Website: <http://www.immunoway.com.cn>  
Address: 2200 Ringwood Ave San Jose, CA 95131 USA



Please scan the QR code to access additional product information:

**GABAA R $\beta$ 1**  
**(Phospho Ser434)**  
**Rabbit pAb**

---

For Research Use Only. Not for Use in Diagnostic Procedures.

[Antibody](#) | [ELISA Kits](#) | [Protein](#) | [Reagents](#)