

## EpoR (Phospho Tyr368) Rabbit pAb

CatalogNo: YP0552

### Key Features

#### Host Species

- Rabbit

#### Reactivity

- Human, Mouse, Rat

#### Applications

- WB, IF, ELISA

#### MW

- 55kD (Observed)

#### Isotype

- IgG

### Storage

**Storage\*** -15°C to -25°C/1 year (Do not lower than -25°C)

**Formulation** Liquid in PBS containing 50% glycerol, 0.5% BSA and 0.02% sodium azide.

### Recommended Dilution Ratios

**WB 1:500-1:2000**

**IF 1:200-1:1000**

**ELISA 1:10000**

**Not yet tested in other applications.**

### Basic Information

**Clonality** Polyclonal

### Immunogen Information

**Immunogen** The antiserum was produced against synthesized peptide derived from human Epo-R around the phosphorylation site of Tyr368. AA range:341-390

**Specificity**

Phospho-EpoR (Y368) Polyclonal Antibody detects endogenous levels of EpoR protein only when phosphorylated at Y368. The name of modified sites may be influenced by many factors, such as species (the modified site was not originally found in human samples) and the change of protein sequence (the previous protein sequence is incomplete, and the protein sequence may be prolonged with the development of protein sequencing technology). When naming, we will use the "numbers" in historical reference to keep the sites consistent with the reports. The antibody binds to the following modification sequence (lowercase letters are modification sites):DTyLV

---

## | Target Information

**Gene name** EPOR

**Protein Name** Erythropoietin receptor

Organism	Gene ID	UniProt ID
Human	<a href="#">2057;</a>	<a href="#">P19235;</a>
Mouse	<a href="#">13857;</a>	<a href="#">P14753;</a>
Rat		<a href="#">Q07303;</a>

**Cellular Localization** Cell membrane; Single-pass type I membrane protein.; [Isoform EPOR-S]: Secreted . Secreted and located to the cell surface.

**Tissue specificity** Erythroid cells and erythroid progenitor cells. Isoform EPOR-F is the most abundant form in EPO-dependent erythroleukemia cells and in late-stage erythroid progenitors. Isoform EPOR-S and isoform EPOR-T are the predominant forms in bone marrow. Isoform EPOR-T is the most abundant form in early-stage erythroid progenitor cells.

## Function

Disease: Defects in EPOR are the cause of erythrocytosis familial type 1 (ECYT1) [MIM:133100]. ECYT1 is an autosomal dominant disorder characterized by increased serum red blood cell mass, elevated hemoglobin and hematocrit, hypersensitivity of erythroid progenitors to erythropoietin, erythropoietin low serum levels, and no increase in platelets nor leukocytes. It has a relatively benign course and does not progress to leukemia.

Domain: Contains 1 copy of a cytoplasmic motif that is referred to as the immunoreceptor tyrosine-based inhibitor motif (ITIM). This motif is involved in modulation of cellular responses. The phosphorylated ITIM motif can bind the SH2 domain of several SH2-containing phosphatases.

Domain: The box 1 motif is required for JAK interaction and/or activation.

Domain: The WSXWS motif appears to be necessary for proper protein folding and thereby efficient intracellular transport and cell-surface receptor binding.

Function: Isoform EPOR-T, missing the cytoplasmic tail, acts as a dominant-negative receptor of EPOR-mediated signaling.

Function: Receptor for erythropoietin. Mediates erythropoietin-induced erythroblast proliferation and differentiation. Upon EPO stimulation, EPOR dimerizes triggering the JAK2/STAT5 signaling cascade. In some cell types, can also activate STAT1 and STAT3. May also activate the LYN tyrosine kinase.

PTM: On EPO stimulation, phosphorylated on C-terminal tyrosine residues by JAK2. The phosphotyrosine motifs are also recruitment sites for several SH2-containing proteins and adapter proteins which mediate cell proliferation. Phosphorylation on Tyr-454 is required for PTPN6 interaction, Tyr-426 for PTPN11. Tyr-426 is also required for SOCS3 binding, but Tyr-454/Tyr-456 motif is the preferred binding site.

PTM: Ubiquitinated by NOSIP; appears to be either multi-monoubiquitinated or polyubiquitinated. Ubiquitination mediates proliferation and survival of EPO-dependent cells.

similarity: Belongs to the type I cytokine receptor family. Type 1 subfamily.

similarity: Contains 1 fibronectin type-III domain.

similarity: Contains 1 Ras-GEF domain.

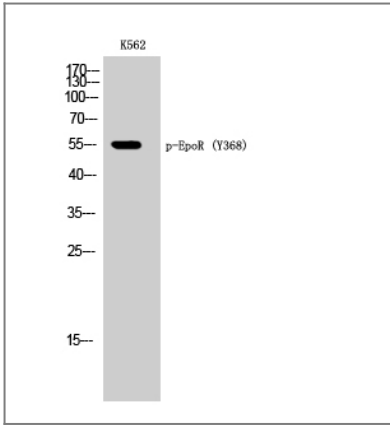
subcellular location: Secreted and located to the cell surface.

subunit: Forms homodimers on EPO stimulation. The tyrosine-phosphorylated form interacts with several SH2 domain-containing proteins including LYN (By similarity), the adapter protein APS, PTPN6 (By similarity), PTPN11, JAK2, PI3 kinases, STAT5A/B, SOCS3, CRKL (By similarity). Interacts with INPP5D/SHIP1 (By similarity). The N-terminal SH2 domain of PTPN6 binds Tyr-454 and inhibits signaling through dephosphorylation of JAK2 (By similarity). APS binding also inhibits the JAK-STAT signaling. Binding to PTPN11, preferentially through the N-terminal SH2 domain, promotes mitogenesis and phosphorylation of PTPN11 (By similarity). Binding of JAK2 (through its N-terminal) promotes cell-surface expression (By similarity). Interaction with the ubiquitin ligase NOSIP mediates EPO-induced cell proliferation. Interacts with ATXN2L.

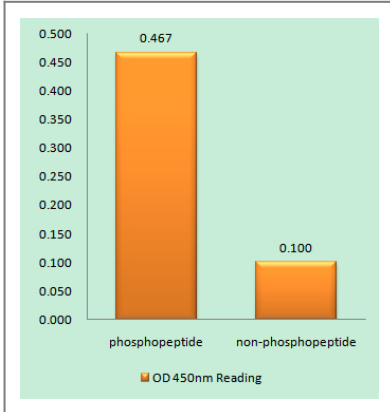
tissue specificity: Erythroid cells and erythroid progenitor cells. Isoform EPOR-F is the most abundant form in EPO-dependent erythroleukemia cells and in late-stage erythroid progenitors. Isoform EPOR-S and isoform EPOR-T are the predominant forms in bone marrow. Isoform EPOR-T is the most abundant form in early-stage erythroid progenitor cells.

---

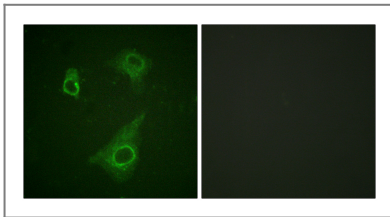
## Validation Data



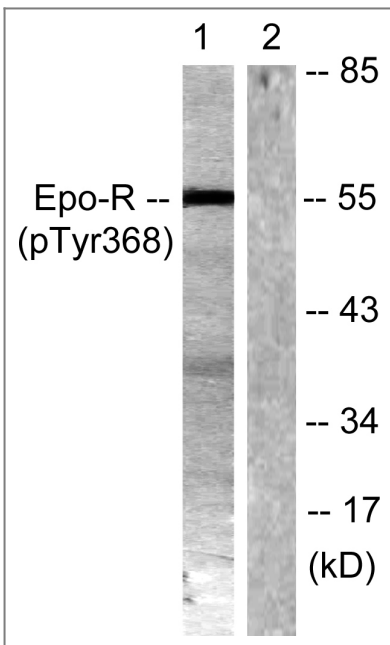
Western Blot analysis of K562 cells using Phospho-EpoR (Y368) Polyclonal Antibody



Enzyme-Linked Immunosorbent Assay (Phospho-ELISA) for Immunogen Phosphopeptide (Phospho-left) and Non-Phosphopeptide (Phospho-right), using Epo-R (Phospho-Tyr368) Antibody



Immunofluorescence analysis of HepG2 cells, using Epo-R (Phospho-Tyr368) Antibody. The picture on the right is blocked with the phospho peptide.



Western blot analysis of lysates from K562 cells, using Epo-R (Phospho-Tyr368) Antibody. The lane on the right is blocked with the phospho peptide.

Orders: order.cn@immunoway.com  
Support: support.cn@immunoway.com  
Telephone: 400-8787-807(China)  
Website: http://www.immunoway.com.cn  
Address: 2200 Ringwood Ave San Jose, CA 95131 USA



Please scan the QR code  
to access additional  
product information:  
**EpoR (Phospho  
Tyr368) Rabbit pAb**

---

For Research Use Only. Not for Use in Diagnostic Procedures.

[Antibody](#) | [ELISA Kits](#) | [Protein](#) | [Reagents](#)