

EphB1/2 (Phospho Tyr594/604) Rabbit pAb

CatalogNo: YP0551

Key Features

Host Species

- Rabbit

Reactivity

- Human, Mouse, Rat

Applications

- WB, IF, ELISA

MW

- 110kD (Observed)

Isotype

- IgG

Storage

Storage* -15°C to -25°C/1 year (Do not lower than -25°C)

Formulation Liquid in PBS containing 50% glycerol, 0.5% BSA and 0.02% sodium azide.

Recommended Dilution Ratios

WB 1:500-1:2000

IF 1:200-1:1000

ELISA 1:5000

Not yet tested in other applications.

Basic Information

Clonality Polyclonal

Immunogen Information

Immunogen The antiserum was produced against synthesized peptide derived from human EPHB1/2 around the phosphorylation site of Tyr594/604. AA range:561-610

Specificity

This antibody detects endogenous levels of EphB1/2 only when phosphorylated at Human:Y594/Y596, Mouse:Y594/Y604, Rat:Y594..The name of modified sites may be influenced by many factors, such as species (the modified site was not originally found in human samples) and the change of protein sequence (the previous protein sequence is incomplete, and the protein sequence may be prolonged with the development of protein sequencing technology). When naming, we will use the "numbers" in historical reference to keep the sites consistent with the reports. The antibody binds to the following modification sequence (lowercase letters are modification sites):KlyID

Target Information

Gene name EPHB1/EPHB2

Protein Name Ephrin type-B receptor 1/2

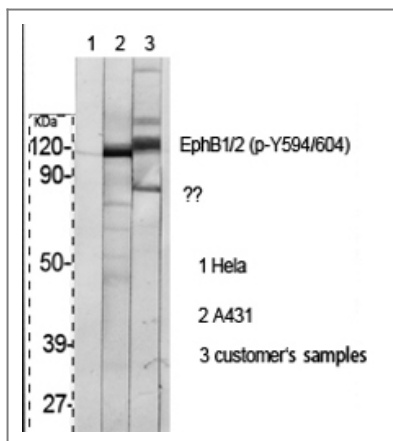
Organism	Gene ID	UniProt ID
Human	2047 ; 1969 ;	P54762 ; P29323 ;
Mouse	270190 ;	
Rat	24338 ;	P09759 ;

Cellular Localization Cell membrane ; Single-pass type I membrane protein . Early endosome membrane . Cell projection, dendrite .

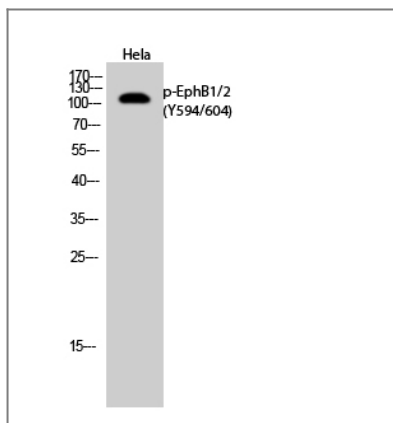
Tissue specificity Preferentially expressed in brain.

Function Catalytic activity:ATP + a [protein]-L-tyrosine = ADP + a [protein]-L-tyrosine phosphate.,Function:Receptor for members of the ephrin-B family. Binds to ephrin-B1, -B2 and -B3. May be involved in cell-cell interactions in the nervous system.,similarity:Belongs to the protein kinase superfamily. Tyr protein kinase family. Ephrin receptor subfamily.,similarity:Contains 1 protein kinase domain.,similarity:Contains 1 SAM (sterile alpha motif) domain.,similarity:Contains 2 fibronectin type-III domains.,subunit:The ligand-activated form interacts with GRB2, GRB10 and NCK through their respective SH2 domains. The GRB10 SH2 domain binds EPHB1 through Tyr-928, while GRB2 binds residues within the catalytic domain. Interacts with EPHB6. The NCK SH2 domain binds EPHB1 through Tyr-594. Interacts with PRKCABP.,tissue specificity:Preferentially expressed in brain.,

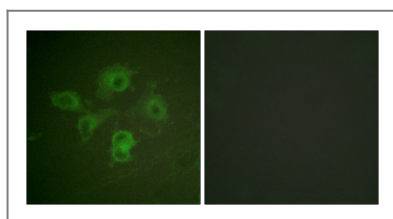
Validation Data



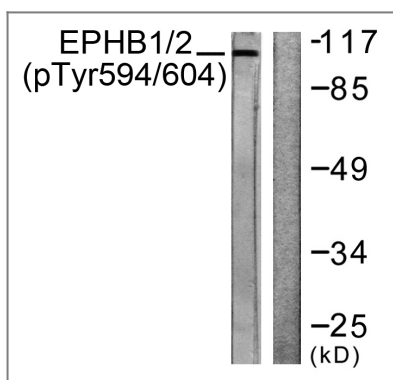
Western Blot analysis of various cells using Phospho-EphB1/2 (Y594/604) Polyclonal Antibody



Western Blot analysis of HeLa cells using Phospho-EphB1/2 (Y594/604) Polyclonal Antibody



Immunofluorescence analysis of HUVEC cells, using EPHB1/2 (Phospho-Tyr594/604) Antibody. The picture on the right is blocked with the phospho peptide.



Western blot analysis of lysates from HepG2 cells, using EPHB1/2 (Phospho-Tyr594/604) Antibody. The lane on the right is blocked with the phospho peptide.

Contact information

Orders: order.cn@immunoway.com
 Support: support.cn@immunoway.com
 Telephone: 400-8787-807(China)
 Website: <http://www.immunoway.com.cn>
 Address: 2200 Ringwood Ave San Jose, CA 95131 USA



Please scan the QR code to access additional product information:
EphB1/2 (Phospho Tyr594/604) Rabbit pAb

