

## DAPK3 (Phospho Thr265) Rabbit pAb

CatalogNo: YP0548

### Key Features

#### Host Species

- Rabbit

#### Reactivity

- Human, Mouse, Rat

#### Applications

- WB, IHC, IF, ELISA

#### MW

- 52kD (Observed)

#### Isotype

- IgG

### Storage

**Storage\*** -15°C to -25°C/1 year (Do not lower than -25°C)

**Formulation** Liquid in PBS containing 50% glycerol, 0.5% BSA and 0.02% sodium azide.

### Recommended Dilution Ratios

**WB 1:500-1:2000**

**IHC 1:100-1:300**

**IF 1:200-1:1000**

**ELISA 1:10000**

**Not yet tested in other applications.**

### Basic Information

**Clonality** Polyclonal

### Immunogen Information

**Immunogen** The antiserum was produced against synthesized peptide derived from human DAPK3 around the phosphorylation site of Thr265. AA range:241-290

## Specificity

Phospho-DAPK3 (T265) Polyclonal Antibody detects endogenous levels of DAPK3 protein only when phosphorylated at T265. The name of modified sites may be influenced by many factors, such as species (the modified site was not originally found in human samples) and the change of protein sequence (the previous protein sequence is incomplete, and the protein sequence may be prolonged with the development of protein sequencing technology). When naming, we will use the "numbers" in historical reference to keep the sites consistent with the reports. The antibody binds to the following modification sequence (lowercase letters are modification sites):RMtIA

## Target Information

**Gene name** DAPK3

**Protein Name** Death-associated protein kinase 3

Organism	Gene ID	UniProt ID
Human	<a href="#">1613</a> ;	<a href="#">O43293</a> ;
Mouse	<a href="#">13144</a> ;	<a href="#">O54784</a> ;
Rat	<a href="#">64391</a> ;	<a href="#">O88764</a> ;

### Cellular Localization

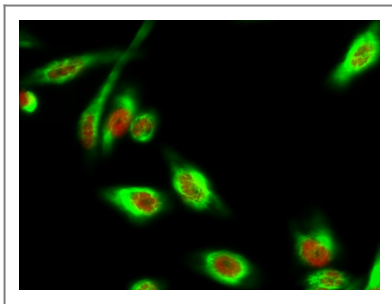
Nucleus . Cytoplasm . Predominantly localizes to the cytoplasm but can shuttle between the nucleus and cytoplasm; cytoplasmic localization is promoted by phosphorylation at Thr-299 and involves Rho/Rock signaling. .; [Isoform 1]: Nucleus . Cytoplasm .; [Isoform 2]: Nucleus . Cytoplasm .

**Tissue specificity** Widely expressed. Isoform 1 and isoform 2 are expressed in the bladder smooth muscle.

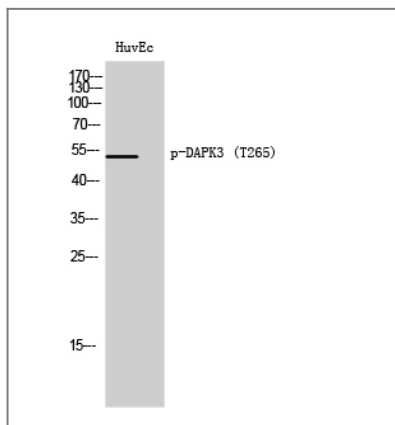
### Function

Catalytic activity:ATP + a protein = ADP + a phosphoprotein. ,cofactor:Magnesium. ,Function:Serine/threonine kinase which acts as a positive regulator of apoptosis. Phosphorylates histone H3 on 'Thr-11' at centromeres during mitosis. ,similarity:Belongs to the protein kinase superfamily. CAMK Ser/Thr protein kinase family. DAP kinase subfamily. ,similarity:Contains 1 protein kinase domain. ,subcellular location:Relocates to the cytoplasm on binding PAWR where the complex appears to interact with actin filaments (By similarity) . Associates to centromeres from prophase to anaphase. ,subunit:Homodimer or forms heterodimers with ATF4. Both interactions require an intact leucine zipper domain and oligomerization is required for full enzymatic activity. Also binds to DAXX and PAWR , possibly in a ternary complex which plays a role in caspase activation. Interacts with AATF and CDC5L. ,

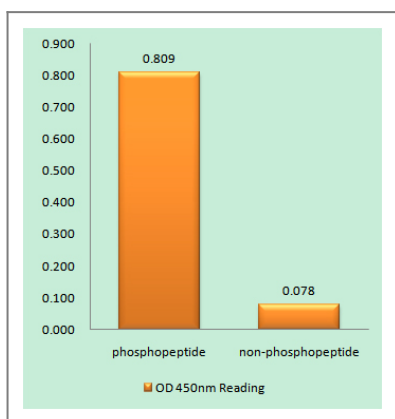
## Validation Data



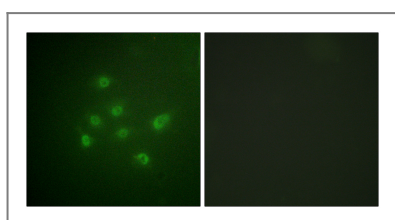
Immunofluorescence analysis of Hela cell. 1, mouse Tubulin Antibody YM3505 (green) was diluted at 1:200 (4°C overnight). DAPK3 (Phospho Thr265) Rabbit pAb (green) was diluted at 1:200 (4°C overnight). 2, Goat Anti Rabbit Alexa Fluor 594 Catalog:RS3611 was diluted at 1:1000 (room temperature, 50min). Goat Anti Mouse Alexa Fluor 488 Catalog:RS3208 was diluted at 1:1000 (room temperature, 50min).



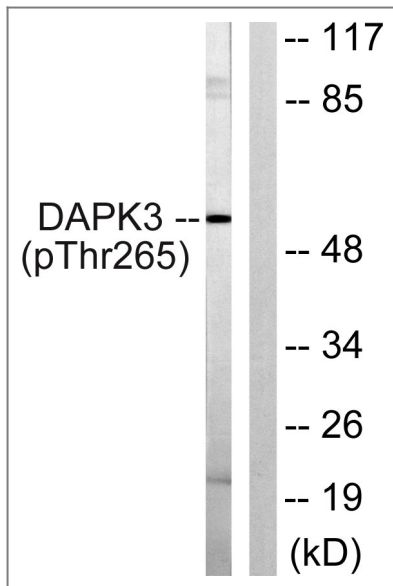
Western Blot analysis of HuvEc cells using Phospho-DAPK3 (T265) Polyclonal Antibody



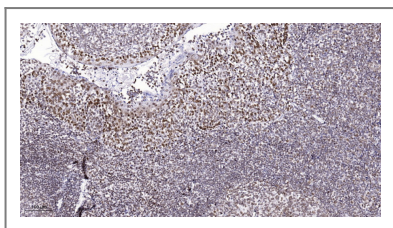
Enzyme-Linked Immunosorbent Assay (Phospho-ELISA) for Immunogen Phosphopeptide (Phospho-left) and Non-Phosphopeptide (Phospho-right), using DAPK3 (Phospho-Thr265) Antibody



Immunofluorescence analysis of A549 cells, using DAPK3 (Phospho-Thr265) Antibody. The picture on the right is blocked with the phospho peptide.



Western blot analysis of lysates from HUVEC cells, using DAPK3 (Phospho-Thr265) Antibody. The lane on the right is blocked with the phospho peptide.



Immunohistochemical analysis of paraffin-embedded human tonsil. 1, Antibody was diluted at 1:200 (4°C overnight). 2, Tris-EDTA, pH9.0 was used for antigen retrieval. 3, Secondary antibody was diluted at 1:200 (room temperature, 45min).

## Contact information

Orders: [order.cn@immunoway.com](mailto:order.cn@immunoway.com)  
 Support: [support.cn@immunoway.com](mailto:support.cn@immunoway.com)  
 Telephone: 400-8787-807(China)  
 Website: <http://www.immunoway.com.cn>  
 Address: 2200 Ringwood Ave San Jose, CA 95131 USA



Please scan the QR code to access additional product information:  
**DAPK3 (Phospho Thr265) Rabbit pAb**

For Research Use Only. Not for Use in Diagnostic Procedures.

[Antibody](#) | [ELISA Kits](#) | [Protein](#) | [Reagents](#)