

## B-Myb (Phospho Ser577) Rabbit pAb

CatalogNo: YP0540

### | Key Features

#### Host Species

- Rabbit

#### Reactivity

- Human, Mouse, Rat

#### Applications

- WB, IF, ELISA

#### MW

- 80kD (Observed)

#### Isotype

- IgG

### | Recommended Dilution Ratios

**WB 1:500-1:2000**

**IF 1:200-1:1000**

**ELISA 1:40000**

**Not yet tested in other applications.**

### | Storage

#### Storage\*

-15°C to -25°C/1 year (Do not lower than -25°C)

#### Formulation

Liquid in PBS containing 50% glycerol, 0.5% BSA and 0.02% sodium azide.

### | Basic Information

#### Clonality

Polyclonal

### | Immunogen Information

#### Immunogen

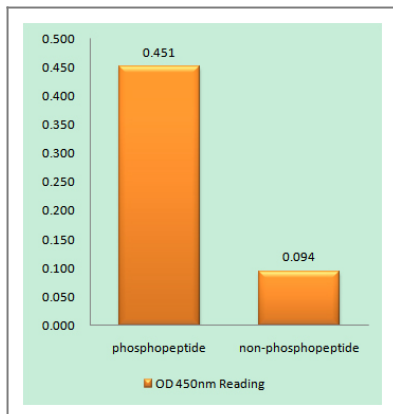
The antiserum was produced against synthesized peptide derived from human B-Myb around the phosphorylation site of Ser577/581. AA range: 551-600

**Specificity** Phospho-B-Myb (S577) Polyclonal Antibody detects endogenous levels of B-Myb protein only when phosphorylated at S577. The name of modified sites may be influenced by many factors, such as species (the modified site was not originally found in human samples) and the change of protein sequence (the previous protein sequence is incomplete, and the protein sequence may be prolonged with the development of protein sequencing technology). When naming, we will use the "numbers" in historical reference to keep the sites consistent with the reports. The antibody binds to the following modification sequence (lowercase letters are modification sites):RRsPI

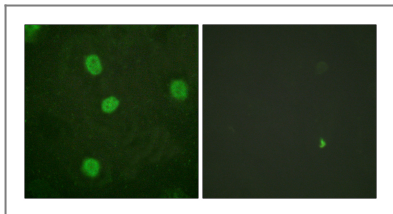
## | Target Information

Gene name	MYBL2		
Protein Name	Myb-related protein B		
	Organism	Gene ID	UniProt ID
	Human	<a href="#">4605;</a>	<a href="#">P10244;</a>
	Mouse	<a href="#">17865;</a>	<a href="#">P48972;</a>
Cellular Localization	Nucleus.		
Tissue specificity	Brain,Epithelium,Eye,		
Function	Function:Transcription factor involved in the regulation of cell survival, proliferation, and differentiation. Transactivates the expression of the CLU gene.,PTM:Phosphorylated by cyclin A/CDK2 during S-phase. Phosphorylation at Thr-520 is probably involved in transcriptional activity.,similarity:Contains 3 HTH myb-type DNA-binding domains.,subunit:Component of the DREAM complex (also named LINC complex) at least composed of E2F4, E2F5, LIN9, LIN37, LIN52, LIN54, MYBL1, MYBL2, RBL1, RBL2, RBBP4, TFDP1 and TFDP2. The complex exists in quiescent cells where it represses cell cycle-dependent genes. It dissociates in S phase when LIN9, LIN37, LIN52 and LIN54 form a subcomplex that binds to MYBL22.,		

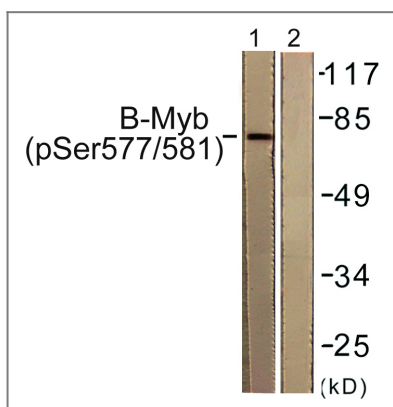
## | Validation Data



Enzyme-Linked Immunosorbent Assay (Phospho-ELISA) for Immunogen Phosphopeptide (Phospho-left) and Non-Phosphopeptide (Phospho-right), using B-Myb (Phospho-Ser577/581) Antibody



Immunofluorescence analysis of HeLa cells, using B-Myb (Phospho-Ser577/581) Antibody. The picture on the right is blocked with the phosphopeptide.



Western blot analysis of lysates from K562 cells, using B-Myb (Phospho-Ser577/581) Antibody. The lane on the right is blocked with the phosphopeptide.

## Contact information

Orders: order.cn@immunoway.com  
 Support: support.cn@immunoway.com  
 Telephone: 400-8787-807(China)  
 Website: <http://www.immunoway.com.cn>  
 Address: 2200 Ringwood Ave San Jose, CA 95131 USA



Please scan the QR code to access additional product information:

**B-Myb (Phospho Ser577) Rabbit pAb**

For Research Use Only. Not for Use in Diagnostic Procedures.

[Antibody](#) | [ELISA Kits](#) | [Protein](#) | [Reagents](#)