

## Crk II (Phospho Tyr221) Rabbit pAb

CatalogNo: YP0527

### Key Features

#### Host Species

- Rabbit

#### Reactivity

- Human, Mouse, Rat, Monkey

#### Applications

- WB, IF, ELISA

#### MW

- 40kD (Observed)

#### Isotype

- IgG

### Storage

**Storage\*** -15°C to -25°C/1 year (Do not lower than -25°C)

**Formulation** Liquid in PBS containing 50% glycerol, 0.5% BSA and 0.02% sodium azide.

### Recommended Dilution Ratios

**WB 1:500-1:2000**

**IF 1:200-1:1000**

**ELISA 1:40000**

**Not yet tested in other applications.**

### Basic Information

**Clonality** Polyclonal

### Immunogen Information

**Immunogen** The antiserum was produced against synthesized peptide derived from human CrkII around the phosphorylation site of Tyr221. AA range:187-236

## Specificity

Phospho-Crk II (Y221) Polyclonal Antibody detects endogenous levels of Crk II protein only when phosphorylated at Y221. The name of modified sites may be influenced by many factors, such as species (the modified site was not originally found in human samples) and the change of protein sequence (the previous protein sequence is incomplete, and the protein sequence may be prolonged with the development of protein sequencing technology). When naming, we will use the "numbers" in historical reference to keep the sites consistent with the reports. The antibody binds to the following modification sequence (lowercase letters are modification sites):GPyAQ

## Target Information

**Gene name** CRK

**Protein Name** Adapter molecule crk

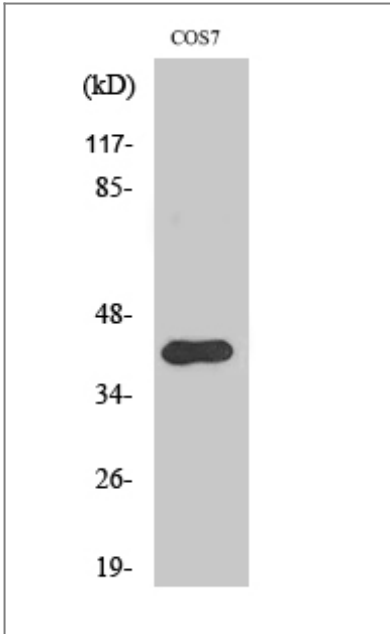
Organism	Gene ID	UniProt ID
Human	<a href="#">1398</a> ;	<a href="#">P46108</a> ;
Mouse	<a href="#">12928</a> ;	<a href="#">Q64010</a> ;
Rat	<a href="#">54245</a> ;	<a href="#">Q63768</a> ;

**Cellular Localization** Cytoplasm . Cell membrane . Translocated to the plasma membrane upon cell adhesion. .

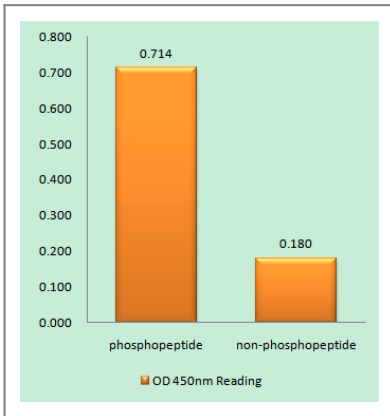
**Tissue specificity** Embryonic lung,Epithelium,Eye,Lung,Placenta,

**Function** Domain:The C-terminal SH3 domain function as a negative modulator for transformation and the N-terminal SH3 domain appears to function as a positive regulator for transformation.,Domain:The SH2 domain mediates interaction with SHB.,Function:The Crk-I and Crk-II forms differ in their biological activities. Crk-II has less transforming activity than Crk-I. Crk-II mediates attachment-induced MAPK8 activation, membrane ruffling and cell motility in a Rac-dependent manner. Involved in phagocytosis of apoptotic cells and cell motility via its interaction with DOCK1 and DOCK4.,PTM:Phosphorylated on Tyr-221 upon cell adhesion. Results in the negative regulation of the association with SH2- and SH3-binding partners, possibly by the formation of an intramolecular interaction of phosphorylated Tyr-221 with the SH2 domain. This leads finally to the down-regulation of the Crk signaling pathway.,PTM:Phosphorylation of Crk-II (40 kDa) gives rise to a 42 kDa form.,similarity:Contains 1 SH2 domain.,similarity:Contains 1 SH3 domain.,similarity:Contains 2 SH3 domains.,subcellular location:Translocated to the plasma membrane upon cell adhesion.,subunit:Interacts with ABL1, C3G, SOS, MAP4K1, MAPK8 and DOCK3 via its first SH3 domain. Interacts with BCAR1, CBL, CBLB, PXN, IRS4 and GAB1 via its SH2 domain upon stimulus-induced tyrosine phosphorylation. Interacts with several tyrosine-phosphorylated growth factor receptors such as EGFR, PDGFR and INSR via its SH2 domain (By similarity). Interacts with DOCK1 and DOCK4. Interacts with SHB.,

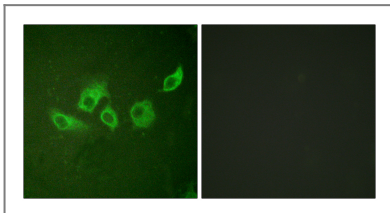
## Validation Data



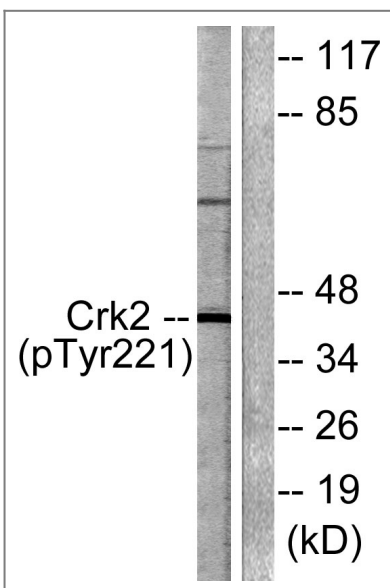
Western Blot analysis of various cells using Phospho-Crk II (Y221) Polyclonal Antibody



Enzyme-Linked Immunosorbent Assay (Phospho-ELISA) for Immunogen Phosphopeptide (Phospho-left) and Non-Phosphopeptide (Phospho-right), using CrkII (Phospho-Tyr221) Antibody



Immunofluorescence analysis of HUVEC cells, using CrkII (Phospho-Tyr221) Antibody. The picture on the right is blocked with the phospho peptide.



Western blot analysis of lysates from COS7 cells, using CrkII (Phospho-Tyr221) Antibody. The lane on the right is blocked with the phospho peptide.

## | Contact information

Orders: order.cn@immunoway.com  
Support: support.cn@immunoway.com  
Telephone: 400-8787-807(China)  
Website: <http://www.immunoway.com.cn>  
Address: 2200 Ringwood Ave San Jose, CA 95131 USA



Please scan the QR code to access additional product information:  
**Crk II (Phospho Tyr221) Rabbit pAb**

---

For Research Use Only. Not for Use in Diagnostic Procedures.

[Antibody](#) | [ELISA Kits](#) | [Protein](#) | [Reagents](#)