

## Dab1 (Phospho Tyr232) Rabbit pAb

CatalogNo: YP0522

### Key Features

#### Host Species

- Rabbit

#### Reactivity

- Human, Mouse, Rat

#### Applications

- WB, IF, ELISA

#### MW

- 80kD (Observed)

#### Isotype

- IgG

### Storage

**Storage\*** -15°C to -25°C/1 year (Do not lower than -25°C)

**Formulation** Liquid in PBS containing 50% glycerol, 0.5% BSA and 0.02% sodium azide.

### Recommended Dilution Ratios

**WB 1:500-1:2000**

**IF 1:200-1:1000**

**ELISA 1:20000**

**Not yet tested in other applications.**

### Basic Information

**Clonality** Polyclonal

### Immunogen Information

**Immunogen** The antiserum was produced against synthesized peptide derived from human Dab1 around the phosphorylation site of Tyr232. AA range:199-248

## Specificity

Phospho-Dab1 (Y232) Polyclonal Antibody detects endogenous levels of Dab1 protein only when phosphorylated at Y232. The name of modified sites may be influenced by many factors, such as species (the modified site was not originally found in human samples) and the change of protein sequence (the previous protein sequence is incomplete, and the protein sequence may be prolonged with the development of protein sequencing technology). When naming, we will use the "numbers" in historical reference to keep the sites consistent with the reports. The antibody binds to the following modification sequence (lowercase letters are modification sites):GVyDV

---

## | Target Information

**Gene name** DAB1

**Protein Name** Disabled homolog 1

Organism	Gene ID	UniProt ID
Human	<a href="#">8674</a> ;	<a href="#">O75553</a> ;
Mouse	<a href="#">13131</a> ;	<a href="#">P97318</a> ;
Rat	<a href="#">266729</a> ;	<a href="#">Q8CJH2</a> ;

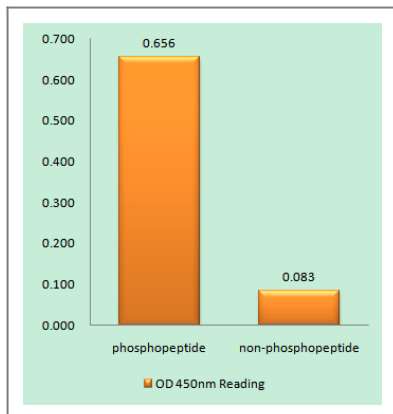
**Cellular Localization** nucleolus,microtubule organizing center,cytosol,brush border,postsynaptic density,membrane,neuron projection,neuronal cell body,intracellular membrane-bounded organelle,apical part of cell,perinuclear region of cytoplasm,

**Tissue specificity** Mainly expressed in brain.

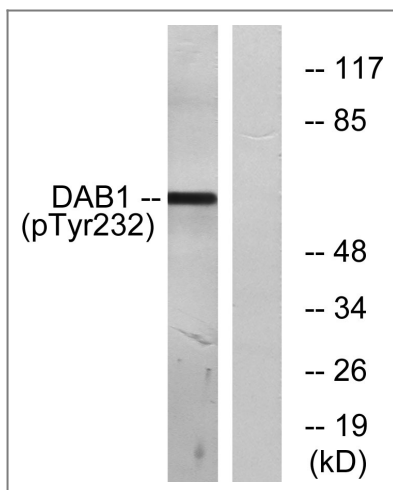
**Function** Domain:The PID domain specifically binds to the Asn-Pro-Xaa-Tyr(P) motif found in many tyrosine-phosphorylated proteins.,Function:Adapter molecule functioning in neural development. May regulate SIAH1 activity.,PTM:Phosphorylated on Tyr-198 and Tyr-220 upon reelin induction in embryonic neurons (By similarity). Also phosphorylated on Ser-524 independently of reelin signaling.,similarity:Contains 1 PID domain.,subunit:Associates with the SH2 domains of SRC, FYN and ABL. Interacts with DAB2IP and SIAH1 (By similarity). Interacts with LRP1.,

---

## | Validation Data



Enzyme-Linked Immunosorbent Assay (Phospho-ELISA) for Immunogen Phosphopeptide (Phospho-left) and Non-Phosphopeptide (Phospho-right), using Dab1 (Phospho-Tyr232) Antibody



Western blot analysis of lysates from LOVO cells, using Dab1 (Phospho-Tyr232) Antibody. The lane on the right is blocked with the phospho peptide.

## Contact information

Orders: [order.cn@immunoway.com](mailto:order.cn@immunoway.com)  
 Support: [support.cn@immunoway.com](mailto:support.cn@immunoway.com)  
 Telephone: 400-8787-807(China)  
 Website: <http://www.immunoway.com.cn>  
 Address: 2200 Ringwood Ave San Jose, CA 95131 USA



Please scan the QR code to access additional product information:  
**Dab1 (Phospho Tyr232) Rabbit pAb**

For Research Use Only. Not for Use in Diagnostic Procedures.

[Antibody](#) | [ELISA Kits](#) | [Protein](#) | [Reagents](#)