

MSK1 (Phospho Ser376) Rabbit pAb

CatalogNo: YP0517 **Orthogonal Validated** 

Key Features

Host Species

- Rabbit

Reactivity

- Human, Mouse

Applications

- WB, IHC

MW

- 90kD (Observed)

Isotype

- IgG

Storage

Storage* -15°C to -25°C/1 year (Do not lower than -25°C)

Formulation Liquid in PBS containing 50% glycerol, 0.5% BSA and 0.02% sodium azide.

Recommended Dilution Ratios

WB 1:500-2000

IHC 1:50-300

Basic Information

Clonality Polyclonal

Immunogen Information

Immunogen The antiserum was produced against synthesized peptide derived from human MSK1 around the phosphorylation site of Ser376. AA range:343-392

Specificity Phospho-MSK1 (S376) Polyclonal Antibody detects endogenous levels of MSK1 protein only when phosphorylated at S376. The name of modified sites may be influenced by many factors, such as species (the modified site was not originally found in human samples) and the change of protein sequence (the previous protein sequence is incomplete, and the protein sequence may be prolonged with the development of protein sequencing technology). When naming, we will use the "numbers" in historical reference to keep the sites consistent with the reports. The antibody binds to the following modification sequence (lowercase letters are modification sites):GYsFV

| Target Information

Gene name RPS6KA5

Protein Name Ribosomal protein S6 kinase alpha-5

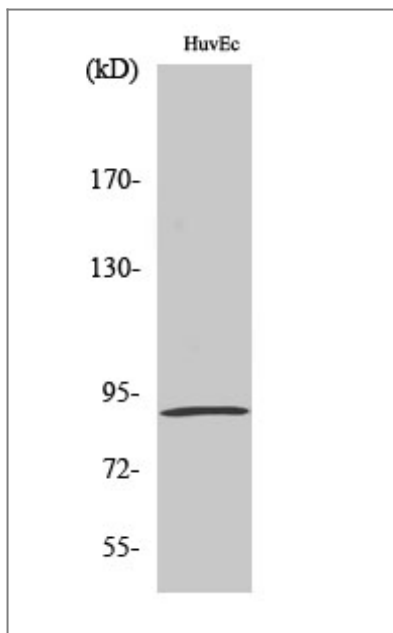
Organism	Gene ID	UniProt ID
Human	9252 ;	O75582 ;
Mouse	73086 ;	Q8C050 ;

Cellular Localization Nucleus. Cytoplasm. Predominantly nuclear. Exported into cytoplasm in response to glucocorticoid.

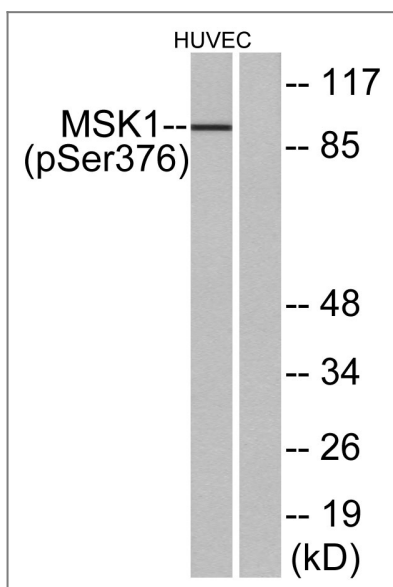
Tissue specificity Widely expressed with high levels in heart , brain and placenta. Less abundant in lung , kidney and liver.

Function Catalytic activity:ATP + a protein = ADP + a phosphoprotein. ,cofactor:Magnesium. ,enzyme regulation:Appears to be activated by multiple phosphorylations on threonine and serine residues. ERK1/2 and MAPK14/p38-alpha may play a role in this process. ,Function:Serine/threonine kinase required for the mitogen or stress-induced phosphorylation of the transcription factors CREB (cAMP response element-binding protein) and ATF1 (activating transcription factor-1) . Essential role in the control of RELA transcriptional activity in response to TNF. Directly represses transcription via phosphorylation of 'Ser-1' of histone H2A. Phosphorylates 'Ser-10' of histone H3 in response to mitogenics , stress stimuli and epidermal growth-factor (EGF) , which results in the transcriptional activation of several immediate early genes , including proto-oncogenes c-fos/FOS and c-jun/JUN. May also phosphorylate 'Ser-28' of histone H3. Mediates the mitogen- and stress-induced phosphorylation of high mobility group protein 14 (HMG-14) . ,miscellaneous:Enzyme activity requires the presence of both kinase domains. ,PTM:Ser-376 and Thr-581 phosphorylation is required for kinase activity. Ser-376 and Ser-212 are autophosphorylated by the C-terminal kinase domain , and their phosphorylation is essential for the catalytic activity of the N-terminal kinase domain. ,similarity:Belongs to the protein kinase superfamily. AGC Ser/Thr protein kinase family. S6 kinase subfamily. ,similarity:Contains 1 AGC-kinase C-terminal domain. ,similarity:Contains 2 protein kinase domains. ,subcellular location:Predominantly nuclear. Partially cytoplasmic. ,subunit:Forms a complex with either ERK1 or ERK2 in quiescent cells which transiently dissociates following mitogenic stimulation. Also associates with MAPK14/p38-alpha. Activated RPS6KA5 associates with and phosphorylates the NF-kappa-B p65 subunit RELA. ,tissue specificity:Widely expressed with high levels in heart , brain and placenta. Less abundant in lung , kidney and liver. ,

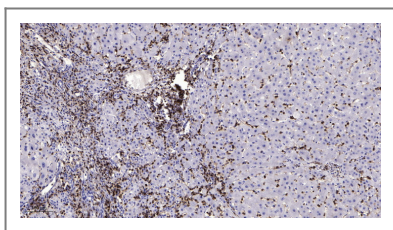
| Validation Data



Western Blot analysis of various cells using Phospho-MSK1 (S376) Polyclonal Antibody diluted at 1:1000



Western blot analysis of lysates from HUVEC cells treated with PMA 125ng/ml 30', using MSK1 (Phospho-Ser376) Antibody. The lane on the right is blocked with the phospho peptide.



Immunohistochemical analysis of paraffin-embedded human liver cancer. 1, Antibody was diluted at 1:200 (4°C overnight). 2, Tris-EDTA, pH9.0 was used for antigen retrieval. 3, Secondary antibody was diluted at 1:200 (room temperature, 45min).

Contact information

Orders: order.cn@immunoway.com
 Support: support.cn@immunoway.com
 Telephone: 400-8787-807(China)
 Website: <http://www.immunoway.com.cn>
 Address: 2200 Ringwood Ave San Jose, CA 95131 USA



Please scan the QR code to access additional product information:
MSK1 (Phospho Ser376) Rabbit pAb

