

Annexin II (Phospho Ser26) Rabbit pAb

CatalogNo: YP0511

Key Features

Host Species

- Rabbit

Reactivity

- Human, Mouse, Rat

Applications

- WB, ELISA

MW

- 38kD (Observed)

Isotype

- IgG

Recommended Dilution Ratios

WB 1:500-1:2000**ELISA 1:10000****Not yet tested in other applications.**

Storage

Storage*

-15°C to -25°C/1 year (Do not lower than -25°C)

Formulation

Liquid in PBS containing 50% glycerol, 0.5% BSA and 0.02% sodium azide.

Basic Information

Clonality

Polyclonal

Immunogen Information

Immunogen

Synthesized phospho-peptide around the phosphorylation site of human Annexin II (phospho Ser26)

Specificity

Phospho-Annexin II (S26) Polyclonal Antibody detects endogenous levels of Annexin II protein only when phosphorylated at S26. The name of modified sites may be influenced by many factors, such as species (the modified site was not originally found in human samples) and the change of protein sequence (the previous protein sequence is incomplete, and the protein sequence may be prolonged with the development of protein sequencing technology). When naming, we will use the "numbers" in historical reference to keep the sites consistent with the reports. The antibody binds to the following modification sequence (lowercase letters are modification sites): YGsVK

Target Information

Gene name ANXA2
Protein Name Annexin A2

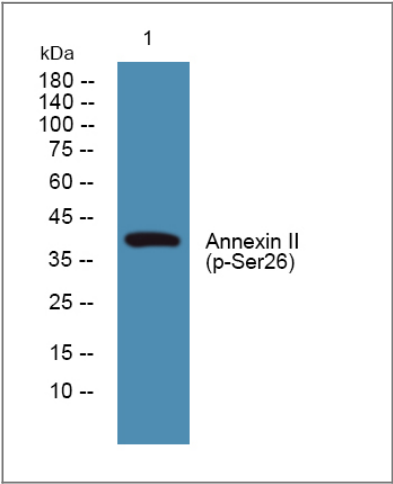
Organism	Gene ID	UniProt ID
Human	302 ;	P07355 ;
Mouse	12306 ;	P07356 ;
Rat	56611 ;	Q07936 ;

Cellular Localization Secreted, extracellular space, extracellular matrix, basement membrane . Melanosome . In the lamina beneath the plasma membrane. Identified by mass spectrometry in melanosome fractions from stage I to stage IV. Translocated from the cytoplasm to the cell surface through a Golgi-independent mechanism.

Tissue specificity Brain,Colon,Colon adenocarcinoma,Epithelium,Osteosarcoma,Pancreas,Placenta,Prostate,Skin,Te

Function Domain:A pair of annexin repeats may form one binding site for calcium and phospholipid.,Function:Calcium-regulated membrane-binding protein whose affinity for calcium is greatly enhanced by anionic phospholipids. It binds two calcium ions with high affinity. May be involved in heat-stress response.,miscellaneous:It may cross-link plasma membrane phospholipids with actin and the cytoskeleton and be involved with exocytosis.,online information:Red velvet - Issue 86 of September 2007,PTM:Phosphorylation of Tyr-24 enhances heat stress-induced translocation to the cell surface.,similarity:Belongs to the annexin family.,similarity:Contains 4 annexin repeats.,subcellular location:In the lamina beneath the plasma membrane. Identified by mass spectrometry in melanosome fractions from stage I to stage IV. Translocated from the cytoplasm to the cell surface through a Golgi-independent mechanism.,subunit:Heterotetramer containing 2 light chains of S100A10/p11 and 2 heavy chains of ANXA2/p36. Interacts with ATP1B1 and DYSF.,

Validation Data



Western blot analysis of lysates from SH-SY5Y cells, primary antibody was diluted at 1:1000, 4°over night

| Contact information

Orders: order.cn@immunoway.com
Support: support.cn@immunoway.com
Telephone: 400-8787-807(China)
Website: <http://www.immunoway.com.cn>
Address: 2200 Ringwood Ave San Jose, CA 95131 USA



Please scan the QR code
to access additional
product information:
**Annexin II (Phospho
Ser26) Rabbit pAb**

For Research Use Only. Not for Use in Diagnostic Procedures.

[Antibody](#) | [ELISA Kits](#) | [Protein](#) | [Reagents](#)