

## EphA4 (Phospho Tyr596) Rabbit pAb

CatalogNo: YP0507

### | Key Features

**Host Species**

- Rabbit

**Reactivity**

- Human, Mouse

**Applications**

- WB, ELISA

**MW**

- 110kD (Observed)

**Isotype**

- IgG

### | Recommended Dilution Ratios

**WB 1:500-1:2000****ELISA 1:10000****Not yet tested in other applications.**

### | Storage

**Storage\***

-15°C to -25°C/1 year (Do not lower than -25°C)

**Formulation**

Liquid in PBS containing 50% glycerol, 0.5% BSA and 0.02% sodium azide.

### | Basic Information

**Clonality**

Polyclonal

### | Immunogen Information

**Immunogen**

Synthesized phospho-peptide around the phosphorylation site of human EphA4 (phospho Tyr596)

**Specificity**

Phospho-EphA4 (Y596) Polyclonal Antibody detects endogenous levels of EphA4 protein only when phosphorylated at Y596. The name of modified sites may be influenced by many factors, such as species (the modified site was not originally found in human samples) and the change of protein sequence (the previous protein sequence is incomplete, and the protein sequence may be prolonged with the development of protein sequencing technology). When naming, we will use the "numbers" in historical reference to keep the sites consistent with the reports. The antibody binds to the following modification sequence (lowercase letters are modification sites): RTyVD

## Target Information

**Gene name** EPHA4

**Protein Name** Ephrin type-A receptor 4

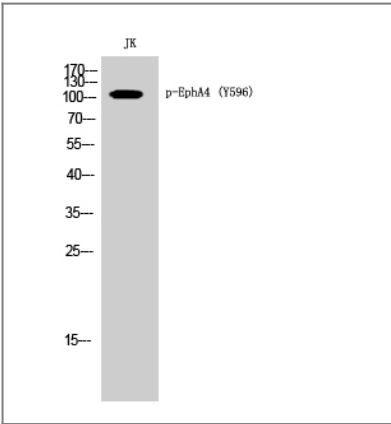
Organism	Gene ID	UniProt ID
Human	<a href="#">2043</a> ;	<a href="#">P54764</a> ;
Mouse	<a href="#">13838</a> ;	<a href="#">Q03137</a> ;

**Cellular Localization** Cell membrane ; Single-pass type I membrane protein . Cell projection, axon . Cell projection, dendrite . Cell junction, synapse, postsynaptic density membrane . Early endosome . Cell junction, adherens junction . Clustered upon activation and targeted to early endosome. .

**Tissue specificity** Ubiquitous.

**Function** Catalytic activity:ATP + a [protein]-L-tyrosine = ADP + a [protein]-L-tyrosine phosphate.,Domain:The protein kinase domain mediates interaction with NGEF/ephexin-1.,Function:Receptor for members of the ephrin-A family. Binds to ephrin-A1, -A4 and -A5. Binds more poorly to ephrin-A2 and -A3. May play a role in a signal transduction process involved in hindbrain pattern formation.,similarity:Belongs to the protein kinase superfamily. Tyr protein kinase family.,similarity:Belongs to the protein kinase superfamily. Tyr protein kinase family. Ephrin receptor subfamily.,similarity:Contains 1 protein kinase domain.,similarity:Contains 1 SAM (sterile alpha motif) domain.,similarity:Contains 2 fibronectin type-III domains.,subunit:Interacts with the src family kinase, p59-Fyn, through the major phosphorylation site at position Tyr-602. Interacts with NGEF/ephexin-1.,tissue specificity:Ubiquitous.,

## Validation Data



Western Blot analysis of JK cells using Phospho-EphA4 (Y596) Polyclonal Antibody

## Contact information

Orders: order.cn@immunoway.com  
Support: support.cn@immunoway.com  
Telephone: 400-8787-807(China)  
Website: <http://www.immunoway.com.cn>  
Address: 2200 Ringwood Ave San Jose, CA 95131 USA



Please scan the QR code  
to access additional  
product information:  
**EphA4 (Phospho  
Tyr596) Rabbit pAb**

---

For Research Use Only. Not for Use in Diagnostic Procedures.

[Antibody](#) | [ELISA Kits](#) | [Protein](#) | [Reagents](#)