

Tubulin α 1/3/4 (Phospho Tyr272) Rabbit pAb

CatalogNo: YP0502

Key Features

Host Species

- Rabbit

Reactivity

- Human, Mouse, Rat

Applications

- WB, ELISA

MW

- 50-55kD (Observed)

Isotype

- IgG

Recommended Dilution Ratios

WB 1:500-1:2000**ELISA 1:40000****Not yet tested in other applications.**

Storage

Storage*

-15°C to -25°C/1 year (Do not lower than -25°C)

Formulation

Liquid in PBS containing 50% glycerol, 0.5% BSA and 0.02% sodium azide.

Basic Information

Clonality

Polyclonal

Immunogen Information

Immunogen

The antiserum was produced against synthesized peptide derived from human TUBA1/3/4 around the phosphorylation site of Tyr272. AA range: 238-287

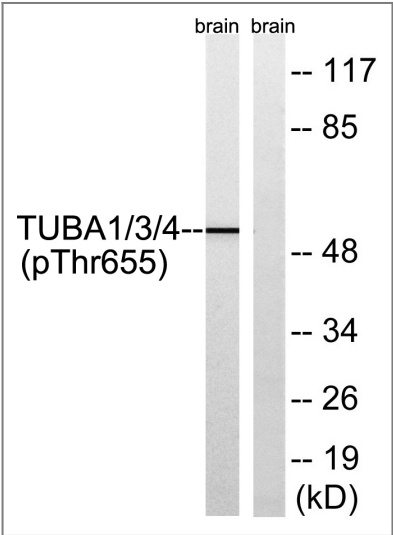
Specificity

Phospho-Tubulin α 1/3/4 (Y272) Polyclonal Antibody detects endogenous levels of Tubulin α 1/3/4 protein only when phosphorylated at Y272. The name of modified sites may be influenced by many factors, such as species (the modified site was not originally found in human samples) and the change of protein sequence (the previous protein sequence is incomplete, and the protein sequence may be prolonged with the development of protein sequencing technology). When naming, we will use the "numbers" in historical reference to keep the sites consistent with the reports. The antibody binds to the following modification sequence (lowercase letters are modification sites): ATyAP

Target Information

Gene name	TUBA1A		
Protein Name	Tubulin alpha-1A chain		
Organism	Gene ID	UniProt ID	
Human	7846 ; 10376 ; 84790 ; 113457 ; 7278 ; 112714 ; Q71U36 ; P68363 ; Q9BQE3 ; Q13748 ; 7277 ;	P68363 ; Q9BQE3 ; Q13748 ; Q6PEY2 ; P68366 ;	
Mouse	22142 ; 22143 ; 22146 ;		
Rat	64158 ; 500929 ; 100909441 ;	P68370 ; Q6P9V9 ; Q6AYZ1 ;	
Cellular Localization	Cytoplasm, cytoskeleton.		
Tissue specificity	Expressed at a high level in fetal brain.		
Function	Disease:Defects in TUBA1A are the cause of lissencephaly type 3 (LIS3) [MIM:611603]. LIS is characterized by a smooth brain surface due to the absence (agyria) or reduction (pachygyria) of surface convolutions. It is often associated with psychomotor retardation and seizures. LIS3 features include agyria or pachygyria or laminar heterotopia, severe mental retardation, motor delay, variable presence of seizures, and abnormalities of corpus callosum, hippocampus, cerebellar vermis and brainstem.,Function:Tubulin is the major constituent of microtubules. It binds two moles of GTP, one at an exchangeable site on the beta chain and one at a non-exchangeable site on the alpha-chain.,PTM:Undergoes a tyrosination/detyrosination cycle, the cyclic removal and re-addition of a C-terminal tyrosine residue by the enzymes tubulin tyrosine carboxypeptidase (TTCP) and tubulin tyrosine ligase (TTL), respectively.,similarity:Belongs to the tubulin family.,subunit:Dimer of alpha and beta chains.,tissue specificity:Expressed at a high level in fetal brain.,		

Validation Data



| Contact information

Orders: order.cn@immunoway.com
Support: support.cn@immunoway.com
Telephone: 400-8787-807(China)
Website: <http://www.immunoway.com.cn>
Address: 2200 Ringwood Ave San Jose, CA 95131 USA



Please scan the QR code
to access additional
product information:

Tubulin α 1/3/4
(Phospho Tyr272)
Rabbit pAb

For Research Use Only. Not for Use in Diagnostic Procedures.

[Antibody](#) | [ELISA Kits](#) | [Protein](#) | [Reagents](#)