

## TPH2 (Phospho Ser19) Rabbit pAb

CatalogNo: YP0501

### Key Features

#### Host Species

- Rabbit

#### Reactivity

- Human,Mouse,Rat

#### Applications

- WB,ELISA

#### MW

- 56kD (Observed)

#### Isotype

- IgG

### Storage

**Storage\*** -15°C to -25°C/1 year(Do not lower than -25°C)

**Formulation** Liquid in PBS containing 50% glycerol, 0.5% BSA and 0.02% sodium azide.

### Recommended Dilution Ratios

**WB 1:500-1:2000**

**ELISA 1:40000**

**Not yet tested in other applications.**

### Basic Information

**Clonality** Polyclonal

### Immunogen Information

**Immunogen** Synthesized phospho-peptide around the phosphorylation site of human TPH2 (phospho Ser19)

**Specificity** Phospho-TPH2 (S19) Polyclonal Antibody detects endogenous levels of TPH2 protein only when phosphorylated at S19. The name of modified sites may be influenced by many factors, such as species (the modified site was not originally found in human samples) and the change of protein sequence (the previous protein sequence is incomplete, and the protein sequence may be prolonged with the development of protein sequencing technology). When naming, we will use the "numbers" in historical reference to keep the sites consistent with the reports. The antibody binds to the following modification sequence (lowercase letters are modification sites):GFsLD

## Target Information

**Gene name** TPH2

**Protein Name** Tryptophan 5-hydroxylase 2

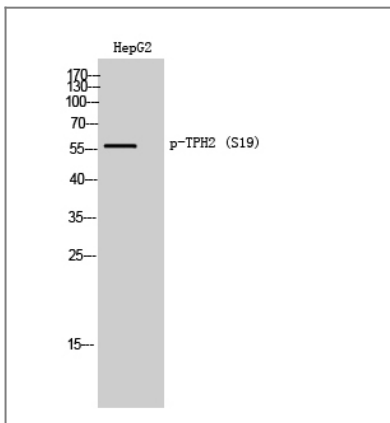
Organism	Gene ID	UniProt ID
Human	<a href="#">121278</a> ;	<a href="#">Q8IWU9</a> ;
Mouse	<a href="#">216343</a> ;	<a href="#">Q8CGV2</a> ;
Rat	<a href="#">317675</a> ;	<a href="#">Q8CGU9</a> ;

**Cellular Localization** cytosol,neuron projection,

**Tissue specificity** Brain specific.

**Function** Catalytic activity:L-tryptophan + tetrahydrobiopterin + O(2) = 5-hydroxy-L-tryptophan + 4a-hydroxytetrahydrobiopterin.,cofactor:Fe(2+) ion.,Disease:Genetic variation in TPH2 may influence susceptibility to major depressive disorder (MDD) [MIM:608516].,pathway:Aromatic compound metabolism; serotonin biosynthesis; serotonin from L-tryptophan: step 1/2.,similarity:Belongs to the biopterin-dependent aromatic amino acid hydroxylase family.,similarity:Contains 1 ACT domain.,tissue specificity:Brain specific.,

## Validation Data



Western Blot analysis of HepG2 cells using Phospho-TPH2 (S19) Polyclonal Antibody

## Contact information

Orders: [order.cn@immunoway.com](mailto:order.cn@immunoway.com)  
Support: [support.cn@immunoway.com](mailto:support.cn@immunoway.com)  
Telephone: 400-8787-807(China)  
Website: <http://www.immunoway.com.cn>  
Address: 2200 Ringwood Ave San Jose, CA 95131 USA



Please scan the QR code to access additional product information:  
**TPH2 (Phospho Ser19) Rabbit pAb**

