

## YB-1 (Phospho Ser102) Rabbit pAb

CatalogNo: YP0489 **Orthogonal Validated** 

### Key Features

#### Host Species

- Rabbit

#### Reactivity

- Human, Mouse, Rat

#### Applications

- WB, ELISA

#### MW

- 36kD (Observed)

#### Isotype

- IgG

### Storage

**Storage\*** -15°C to -25°C/1 year (Do not lower than -25°C)

**Formulation** Liquid in PBS containing 50% glycerol, 0.5% BSA and 0.02% sodium azide.

### Recommended Dilution Ratios

**WB 1:500-1:2000**

**ELISA 1:40000**

**Not yet tested in other applications.**

### Basic Information

**Clonality** Polyclonal

### Immunogen Information

**Immunogen** The antiserum was produced against synthesized peptide derived from human YB1 around the phosphorylation site of Ser102. AA range:68-117

**Specificity** Phospho-YB-1 (S102) Polyclonal Antibody detects endogenous levels of YB-1 protein only when phosphorylated at S102. The name of modified sites may be influenced by many factors, such as species (the modified site was not originally found in human samples) and the change of protein sequence (the previous protein sequence is incomplete, and the protein sequence may be prolonged with the development of protein sequencing technology). When naming, we will use the "numbers" in historical reference to keep the sites consistent with the reports. The antibody binds to the following modification sequence (lowercase letters are modification sites):LRsVG

---

## | Target Information

**Gene name** YBX1

**Protein Name** Nuclease-sensitive element-binding protein 1

Organism	Gene ID	UniProt ID
Human	<a href="#">4904;</a>	<a href="#">P67809;</a>
Mouse	<a href="#">22608;</a>	<a href="#">P62960;</a>
Rat	<a href="#">500538;</a>	<a href="#">P62961;</a>

**Cellular Localization**

Cytoplasm . Nucleus . Cytoplasmic granule . Secreted . Secreted, extracellular exosome . Predominantly cytoplasmic in proliferating cells (PubMed:12604611). Cytotoxic stress and DNA damage enhance translocation to the nucleus (PubMed:14718551). Localized in cytoplasmic mRNP granules containing untranslated mRNAs (PubMed:25229427). Shuttles between nucleus and cytoplasm (PubMed:25229427). Localized with DDX1, MBNL1 and TIAL1 in stress granules upon stress (PubMed:18335541). Secreted by mesangial and monocytic cells after inflammatory challenges (PubMed:19483673). .

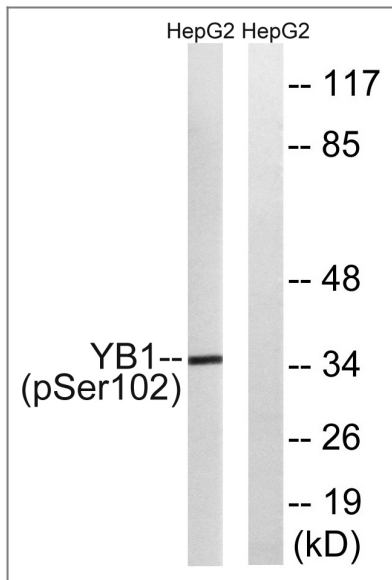
**Tissue specificity** Adrenal cortex,Bone marrow,Brain,Epithelium,Eye,Kidney,Lung,Muscle,Placenta,Skin,Te

**Function**

Function: Binds to splice sites in pre-mRNA and regulates splice site selection. Binds and stabilizes cytoplasmic mRNA. Contributes to the regulation of translation by modulating the interaction between the mRNA and eukaryotic initiation factors (By similarity). Binds to promoters that contain a Y-box (5'-CTGATTGGCCAA-3'), such as HLA class II genes. Regulates the transcription of numerous genes. Promotes separation of DNA strands that contain mismatches or are modified by cisplatin. Has endonucleolytic activity and can introduce nicks or breaks into double-stranded DNA (in vitro). May play a role in DNA repair.,PTM: Cleaved by a 20S proteasomal protease in response to agents that damage DNA. Cleavage takes place in the absence of ubiquitination and ATP. The resulting N-terminal fragment accumulates in the nucleus.,PTM: In the absence of phosphorylation the protein is retained in the cytoplasm.,similarity: Contains 1 CSD (cold-shock) domain.,subcellular location: Shuttles between nucleus and cytoplasm. Predominantly cytoplasmic in proliferating cells. Cytotoxic stress and DNA damage enhance translocation to the nucleus.,subunit: Component of cytoplasmic messenger ribonucleoprotein particles (mRNPs). Interacts with AKT1, SFRS9, THOC4, MSH2, XRCC5, WRN and NCL. Can bind to DNA as a homomeric form, (EFI-A)<sub>n</sub> or as a heteromeric form in association with EFI-B. Homodimer in the presence of ATP.,

---

## | Validation Data



Western blot analysis of lysates from HepG2 cells treated with PMA 125ng/ml 15', using YB1 (Phospho-Ser102) Antibody. The lane on the right is blocked with the phospho peptide.

## Contact information

Orders: [order.cn@immunoway.com](mailto:order.cn@immunoway.com)  
 Support: [support.cn@immunoway.com](mailto:support.cn@immunoway.com)  
 Telephone: 400-8787-807(China)  
 Website: <http://www.immunoway.com.cn>  
 Address: 2200 Ringwood Ave San Jose, CA 95131 USA



Please scan the QR code to access additional product information:  
**YB-1 (Phospho Ser102) Rabbit pAb**

For Research Use Only. Not for Use in Diagnostic Procedures.

[Antibody](#) | [ELISA Kits](#) | [Protein](#) | [Reagents](#)