

SIRT1 (Phospho Ser47) Rabbit pAb

CatalogNo: YP0488

Key Features

Host Species

- Rabbit

Reactivity

- Human,Mouse

Applications

- WB,ELISA,IHC

MW

- 85-110kD (Observed)

Isotype

- IgG

Storage

Storage* -15°C to -25°C/1 year(Do not lower than -25°C)

Formulation Liquid in PBS containing 50% glycerol, 0.5% BSA and 0.02% sodium azide.

Recommended Dilution Ratios

WB 1:500-2000

IHC 1:50-300

ELISA 1:2000-20000

Basic Information

Clonality Polyclonal

Immunogen Information

Immunogen Synthesized phospho-peptide around the phosphorylation site of human SIRT1 (phospho Ser47)

Specificity Phospho-SIRT1 (S47) Polyclonal Antibody detects endogenous levels of SIRT1 protein only when phosphorylated at S47. The name of modified sites may be influenced by many factors, such as species (the modified site was not originally found in human samples) and the change of protein sequence (the previous protein sequence is incomplete, and the protein sequence may be prolonged with the development of protein sequencing technology). When naming, we will use the "numbers" in historical reference to keep the sites consistent with the reports. The antibody binds to the following modification sequence (lowercase letters are modification sites):ERSPG

Target Information

Gene name SIRT1

Protein Name NAD-dependent protein deacetylase sirtuin-1

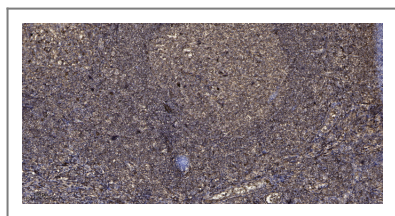
Organism	Gene ID	UniProt ID
Human	23411 ;	Q96EB6 ;
Mouse	93759 ;	Q923E4 ;

Cellular Localization Nucleus, PML body . Cytoplasm . Nucleus . Recruited to the nuclear bodies via its interaction with PML (PubMed:12006491). Colocalized with APEX1 in the nucleus (PubMed:19934257). May be found in nucleolus, nuclear euchromatin, heterochromatin and inner membrane (PubMed:15469825). Shuttles between nucleus and cytoplasm (By similarity). Colocalizes in the nucleus with XBP1 isoform 2 (PubMed:20955178). .; [SirtT1 75 kDa fragment]: Cytoplasm . Mitochondrion .

Tissue specificity Widely expressed.

Function Catalytic activity:NAD(+) + an acetylprotein = nicotinamide + O-acetyl-ADP-ribose + a protein.,cofactor:Binds 1 zinc ion per subunit.,enzyme regulation:Inhibited by nicotinamide. Activated by resveratrol (3,5,4'-trihydroxy-trans-stilbene), butein (3,4,2',4'-tetrahydroxychalcone), piceatannol (3,5,3',4'-tetrahydroxy-trans-stilbene), Isoliquiritigenin (4,2',4'-trihydroxychalcone), fisetin (3,7,3',4'-tetrahydroxyflavone) and quercetin (3,5,7,3',4'-pentahydroxyflavone). RPS19BP1/AROS acts as a positive regulator of deacetylation activity.,Function:NAD-dependent deacetylase, which regulates processes such as apoptosis and muscle differentiation by deacetylating key proteins. Deacetylates 'Lys-382' of p53/TP53 and impairs its ability to induce proapoptotic program and modulate cell senescence. Deacetylates TAF1B and thereby represses rDNA transcription by the RNA polymerase I. Involved in HES1- and HEY2-mediated transcriptional repression. Inhibits skeletal muscle differentiation by deacetylating PCAF and MYOD1. May serve as a sensor of the cytosolic ratio of NAD(+)/NADH, which is essential in skeletal muscle cell differentiation. Despite some ability to deacetylate histones in vitro, such activity is either weak or inexistent in vivo. In case of HIV-1 infection, interacts with and deacetylates the viral Tat protein.,miscellaneous:Red wine, which contains resveratrol, may participate in activation of sirtuin proteins, and may therefore participate in an extended lifespan as it has been observed in yeast.,similarity:Belongs to the sirtuin family.,similarity:Contains 1 deacetylase sirtuin-type domain.,subcellular location:Recruited to the nuclear bodies via its interaction with PML.,subunit:Interacts with TAF1B. Found in a complex with PCAF and MYOD1 (By similarity). Interacts with MLLT7/FOXO4, HES1, HEY2, p53/TP53 and PML. Interacts with RPS19BP1/AROS.,tissue specificity:Widely expressed.,

Validation Data



Immunohistochemical analysis of paraffin-embedded human tonsil. 1, Antibody was diluted at 1:200(4° overnight). 2, Tris-EDTA,pH9.0 was used for antigen retrieval. 3,Secondary antibody was diluted at 1:200(room temperature, 45min).

| Contact information

Orders: order.cn@immunoway.com
Support: support.cn@immunoway.com
Telephone: 400-8787-807(China)
Website: <http://www.immunoway.com.cn>
Address: 2200 Ringwood Ave San Jose, CA 95131 USA



Please scan the QR code to access additional product information:
SIRT1 (Phospho Ser47) Rabbit pAb

For Research Use Only. Not for Use in Diagnostic Procedures.

[Antibody](#) | [ELISA Kits](#) | [Protein](#) | [Reagents](#)