

PAK5/6 (Phospho Ser602/560) Rabbit pAb

CatalogNo: YP0475 **Orthogonal Validated** 

Key Features

Host Species

- Rabbit

Reactivity

- Human, Mouse

Applications

- WB, ELISA

MW

- 75kD (Observed)

Isotype

- IgG

Storage

Storage* -15°C to -25°C/1 year (Do not lower than -25°C)

Formulation Liquid in PBS containing 50% glycerol, 0.5% BSA and 0.02% sodium azide.

Recommended Dilution Ratios

WB 1:500-1:2000

ELISA 1:20000

Not yet tested in other applications.

Basic Information

Clonality Polyclonal

Immunogen Information

Immunogen The antiserum was produced against synthesized peptide derived from human PAK5/6 around the phosphorylation site of Ser602/Ser560. AA range:566-615

Specificity This antibody detects endogenous levels of PAK5/6 only when phosphorylated at Human:S602/560, Mouse:S602/561. The name of modified sites may be influenced by many factors, such as species (the modified site was not originally found in human samples) and the change of protein sequence (the previous protein sequence is incomplete, and the protein sequence may be prolonged with the development of protein sequencing technology). When naming, we will use the "numbers" in historical reference to keep the sites consistent with the reports. The antibody binds to the following modification sequence (lowercase letters are modification sites):RKSLV

Target Information

Gene name PAK6/PAK7

Protein Name Serine/threonine-protein kinase PAK 6/7

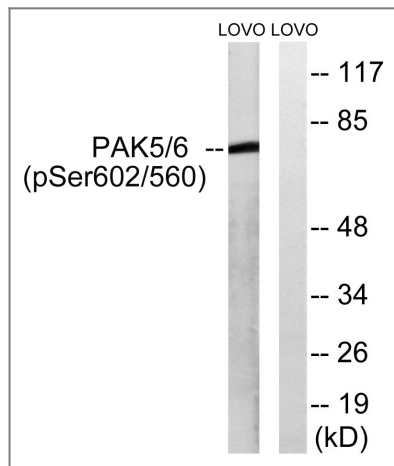
Organism	Gene ID	UniProt ID
Human	57144 ; 56924 ;	Q9P286 ; Q9NQU5 ;
Mouse	241656 ; 214230 ;	

Cellular Localization Mitochondrion. Cytoplasm. Nucleus. Shuttles between the nucleus and the mitochondria, and mitochondrial localization is essential for the role in cell survival.

Tissue specificity Predominantly expressed in brain.

Function Catalytic activity:ATP + a protein = ADP + a phosphoprotein.,Function:The activated kinase acts on a variety of targets.,PTM:Autophosphorylated when activated by CDC42/p21.,similarity:Belongs to the protein kinase superfamily. STE Ser/Thr protein kinase family. STE20 subfamily.,similarity:Contains 1 CRIB domain.,similarity:Contains 1 protein kinase domain.,subunit:Interacts tightly with GTP-bound but not GDP-bound CDC42/p21 and RAC1.,tissue specificity:Predominantly expressed in brain.,

Validation Data



Western blot analysis of lysates from LOVO cells treated with PMA 125ng/ml 30', using PAK5/6 (Phospho-Ser602/Ser560) Antibody. The lane on the right is blocked with the phospho peptide.

Contact information

Orders: order.cn@immunoway.com
Support: support.cn@immunoway.com
Telephone: 400-8787-807(China)
Website: <http://www.immunoway.com.cn>
Address: 2200 Ringwood Ave San Jose, CA 95131 USA



Please scan the QR code to access additional product information:
PAK5/6 (Phospho Ser602/560) Rabbit pAb

